

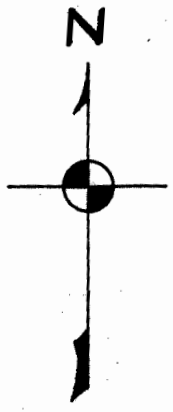
PALMER CORPORATION

TOWNSHIP 36 So. RANGE 2 W.
JACKSON COUNTY - OREGON

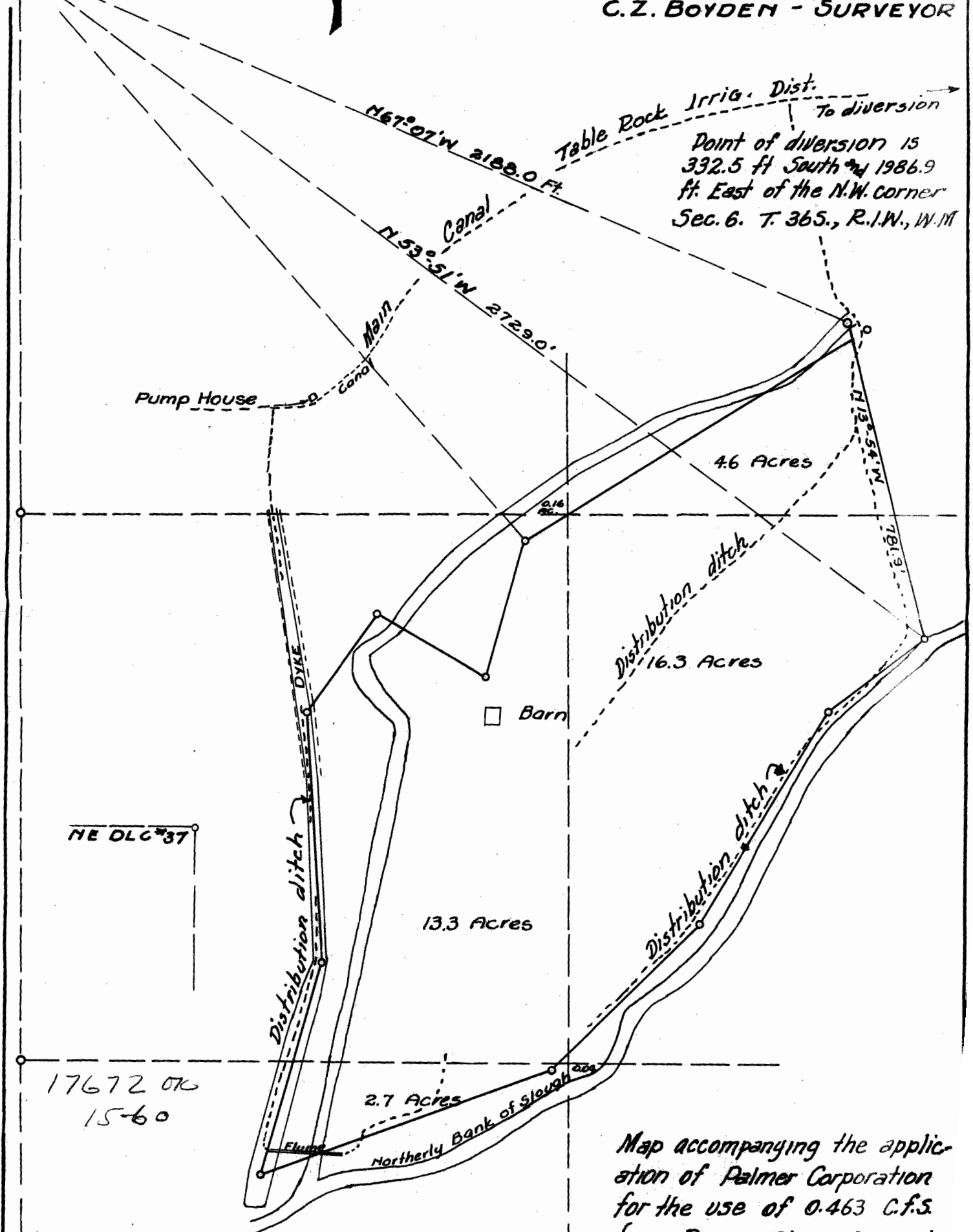
APRIL - 1938

SCALE - 1 in = 300 Ft.

C.Z. BOYDEN - SURVEYOR



1/4 Section Cor.
12



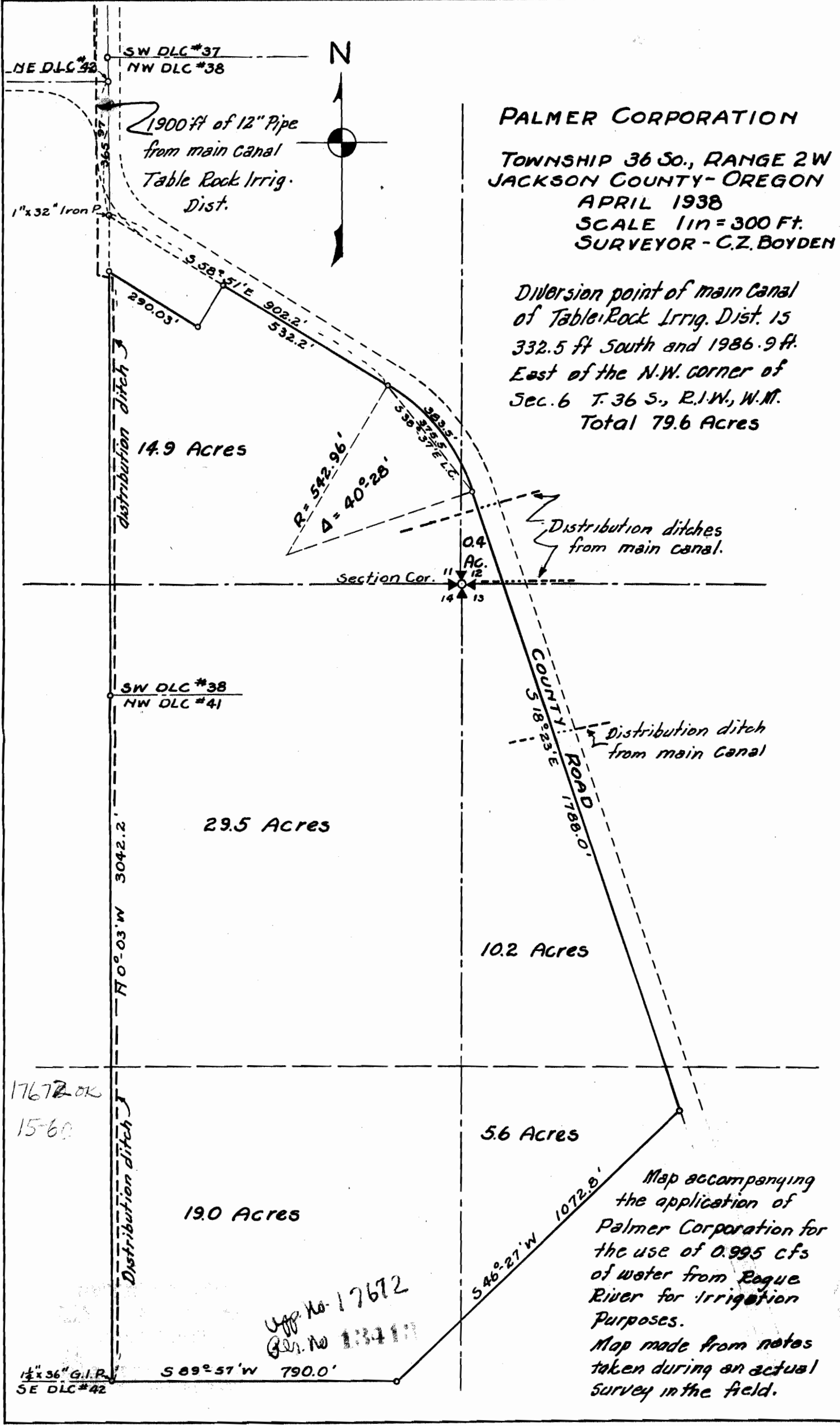
NE DLC 37

17672 OK
15-60

RECEIVED
NOV 20 1938
STATE ENGINEER
SALEM, OREGON

App. No. 17672
Per. No. 13413

Map accompanying the application of Palmer Corporation for the use of 0.463 C.F.S. from Rogue River for Irrigation purposes.
Map made from notes taken during an actual survey in the field.



PALMER CORPORATION
 TOWNSHIP 36 So., RANGE 2W
 JACKSON COUNTY- OREGON
 APRIL 1938
 SCALE 1 in = 300 Ft.
 SURVEYOR - C.Z. BOYDEN

Diversion point of main Canal
 of Table Rock Irrig. Dist. is
 332.5 ft South and 1986.9 ft.
 East of the N.W. corner of
 Sec. 6 T. 36 S., R. 1 W., W. M.
 Total 79.6 Acres

Distribution ditches
 from main canal.

Distribution ditch
 from main Canal

Map accompanying
 the application of
 Palmer Corporation for
 the use of 0.995 cfs
 of water from Rogue
 River for Irrigation
 Purposes.
 Map made from notes
 taken during an actual
 survey in the field.

Off. No. 17672
 Res. No. 134111