

RECEIVED

SALEM, OREGON  
STATE ENGINEER

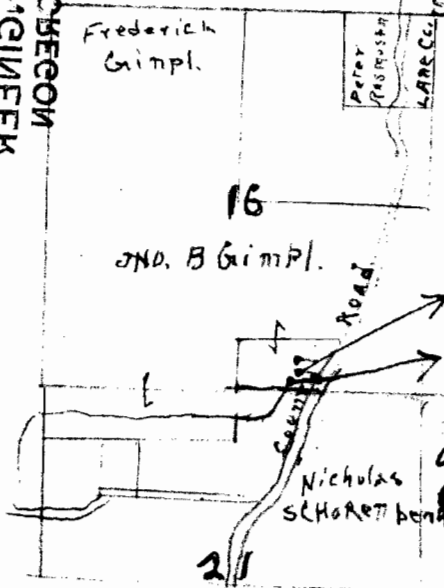
FEB 5 4 1938

17762a  
2-13

RECEIVED

JAN 19 1938  
STATE ENGINEER  
SALEM, OREGON

Sec. 16 T. 19 S. R. 4 W.

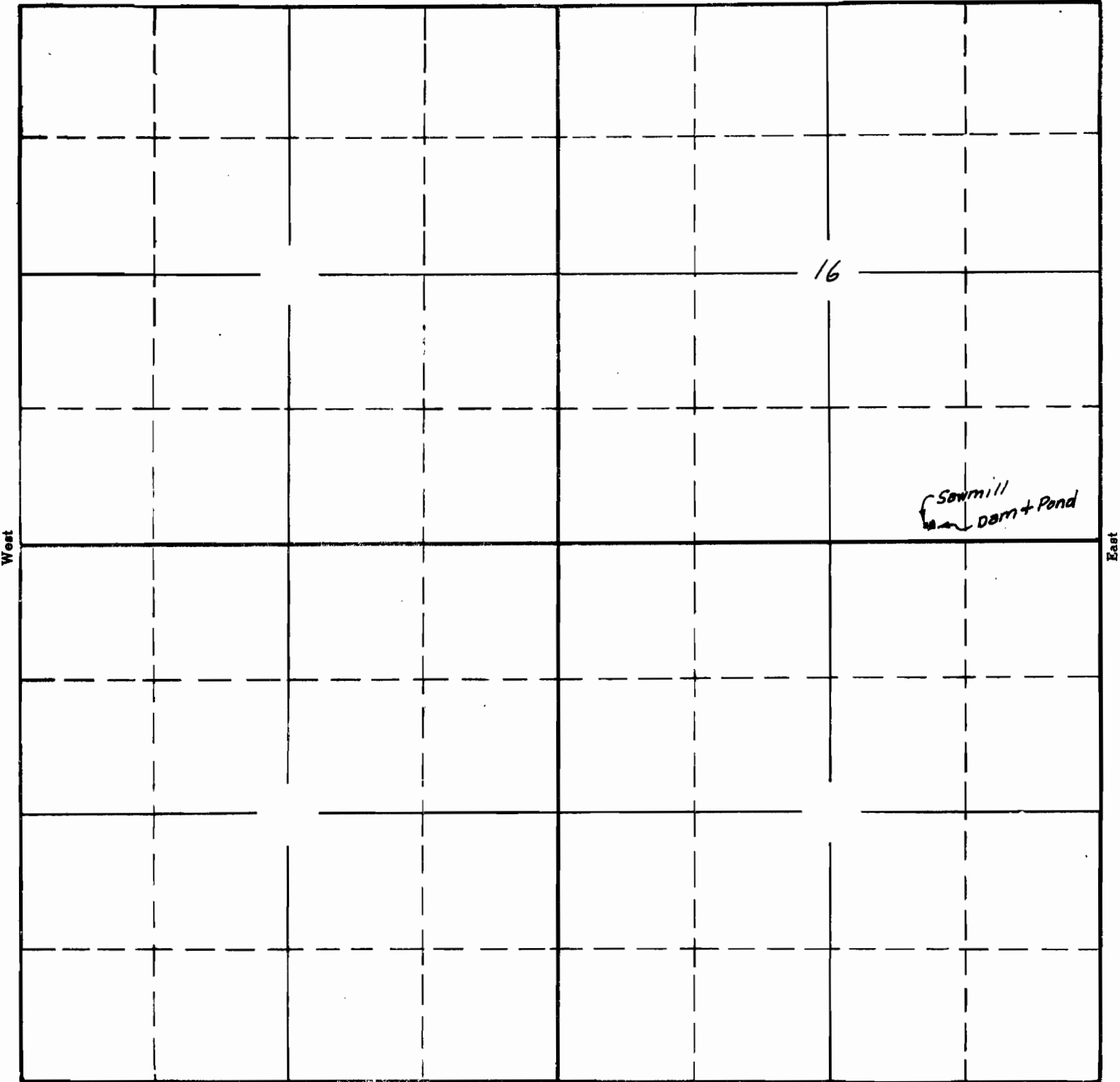


17762  
#13504

SECTION

TOWNSHIP 185. , RANGE 4W. , W. M.

North



West

East

South

Surveyed July 12 1940 C.A.C.

APPLICATION No. 17762  
PERMIT No. 13504