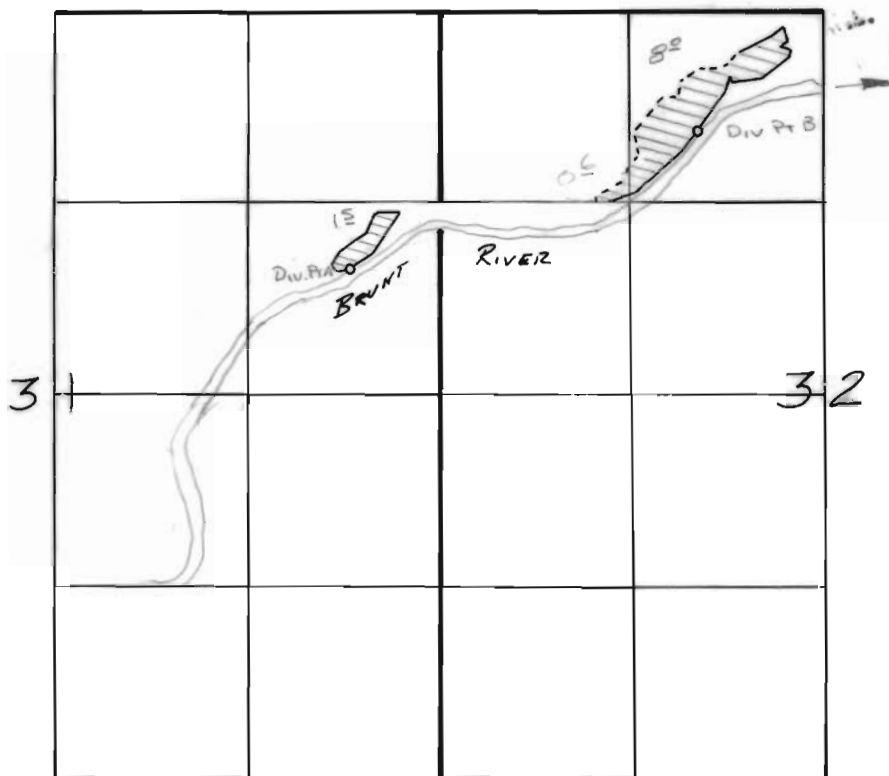


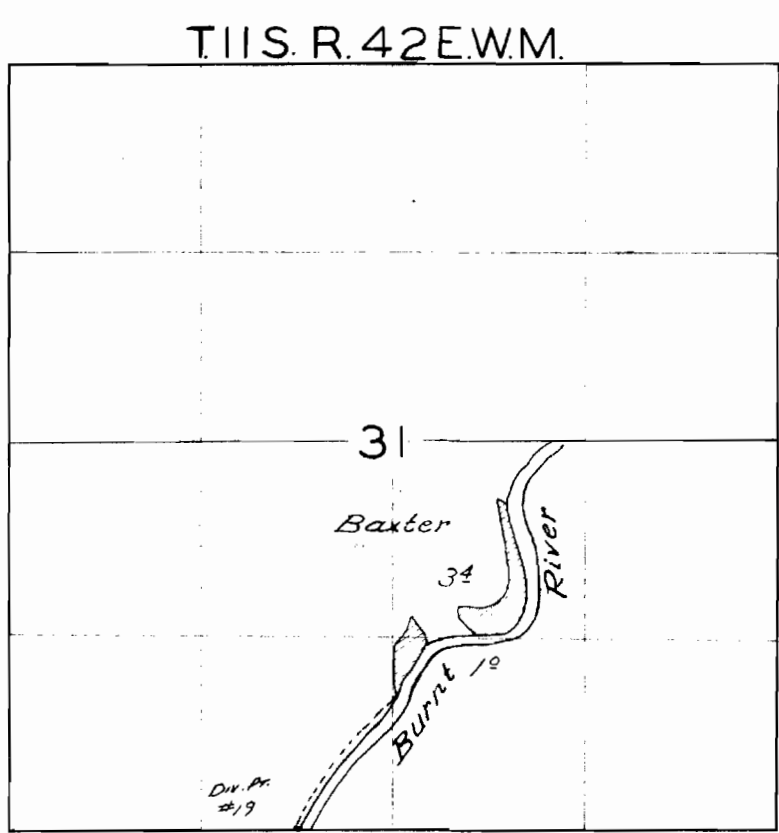
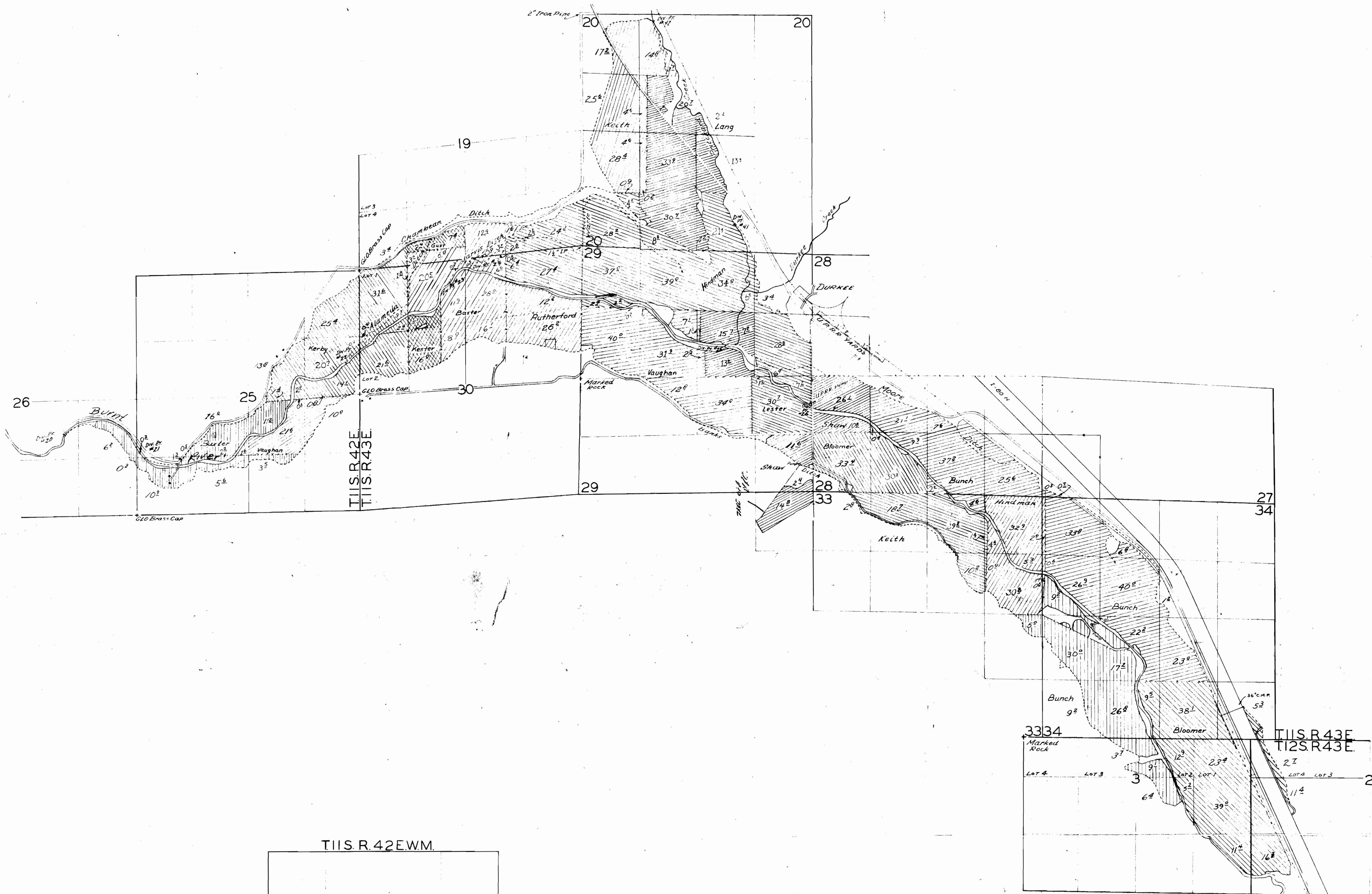
T. 11 S., R. 42 E., W. M.

Div. Pt. A Loc: 860' N + 630' W FROM E $\frac{1}{4}$ COR SEC 31

Div. Pt. B Loc: 1800' N + 860' W FROM CENTER SEC 31

Add'l to Brunt River Irrigation
Dist.Aug 2, 1983 *Vernon Lee Church*

RECEIVED
AUG 8 1963
WATER RESOURCES DIV.
SALINA, OREGON



Located From Adjudication Survey

