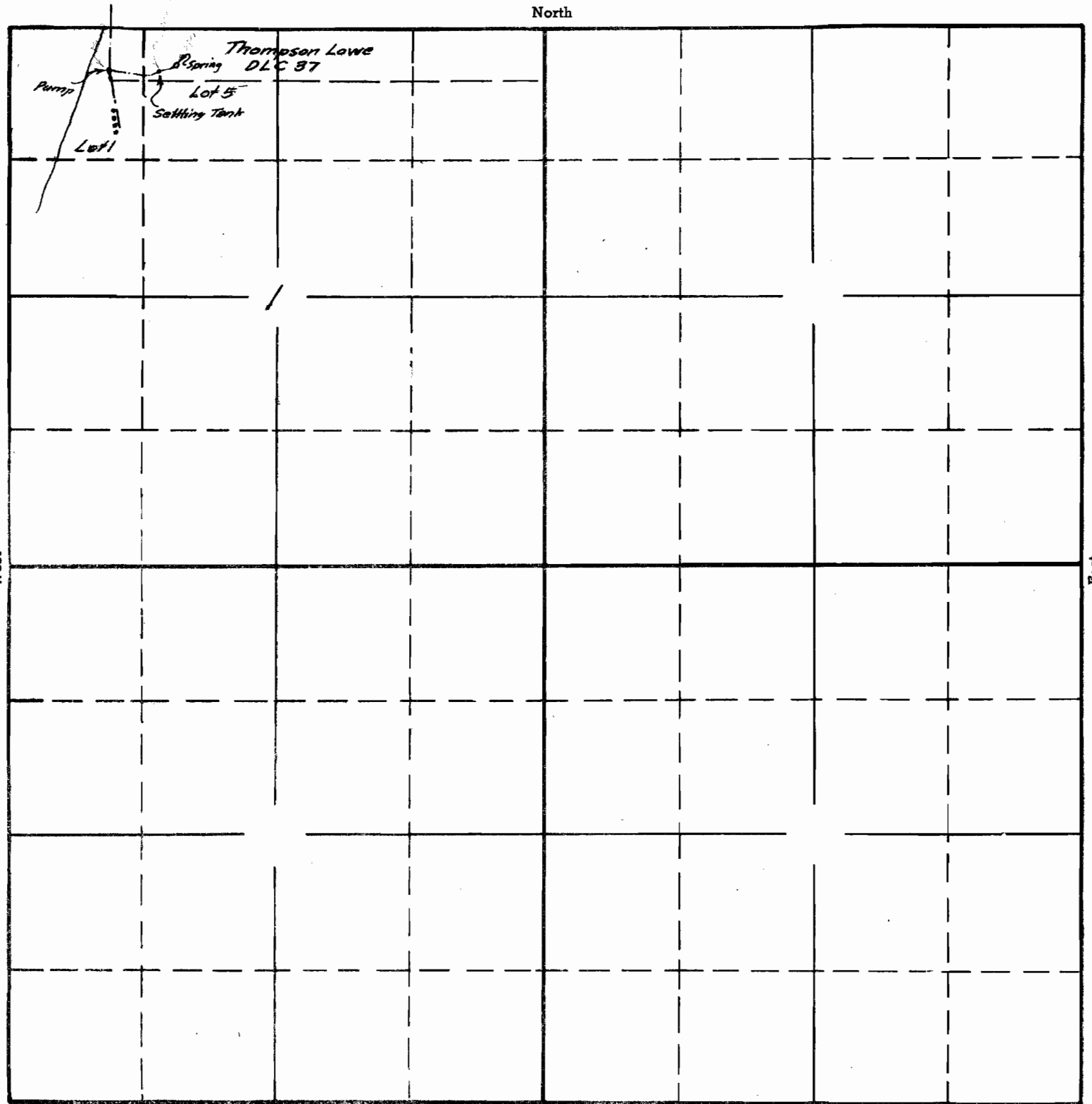


SECTION

TOWNSHIP 295, RANGE 15W, W. M.



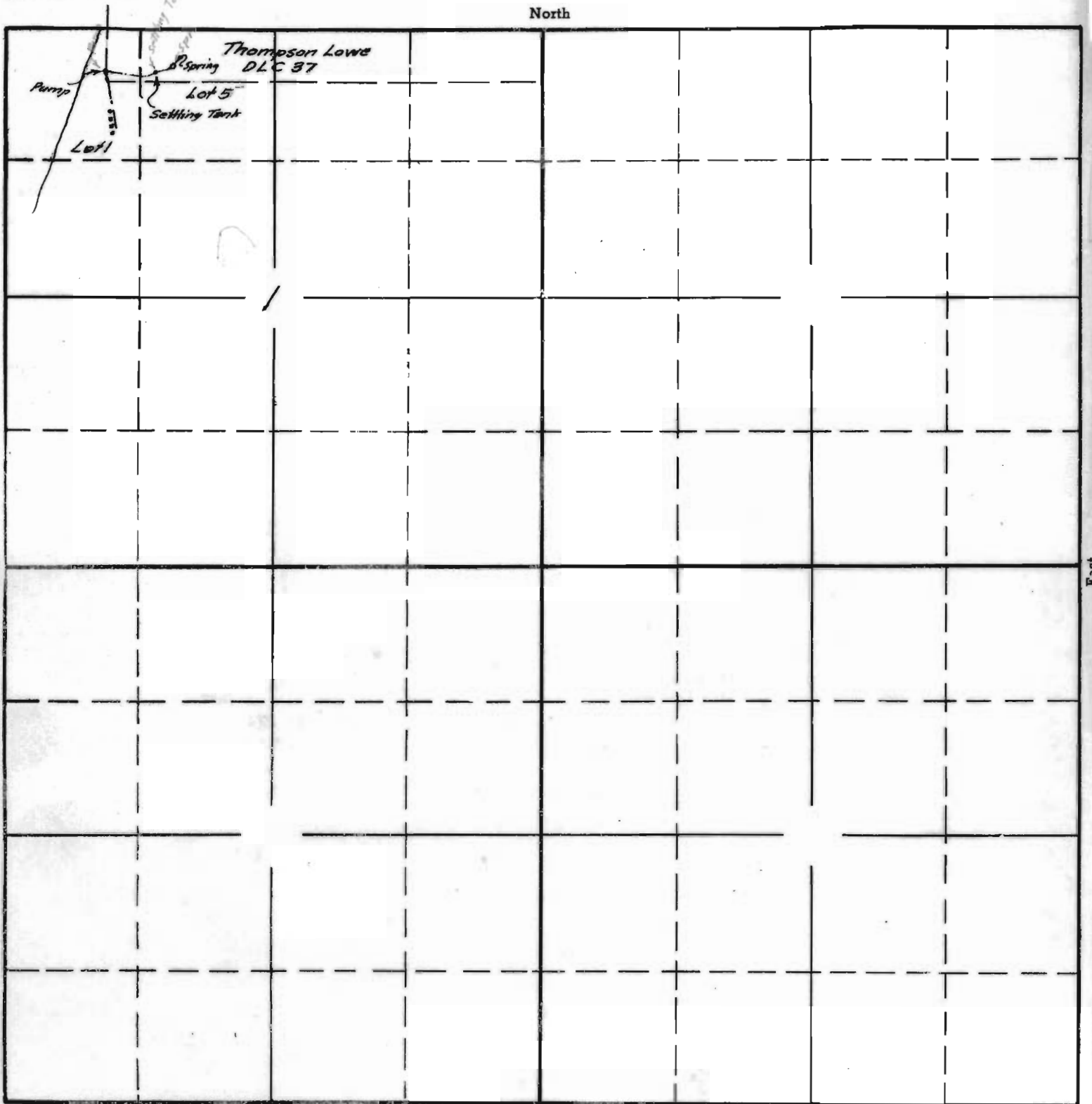
Surveyed July 5, 1940 C.A.S.

South

APPLICATION No. 17901  
13588  
PERMIT No. 5

SECTION

TOWNSHIP 295, RANGE 15W, W. M.



Surveyed July 5, 1940 C.A.S.

South

APPLICATION No. 17901  
13588  
PERMIT No. 3