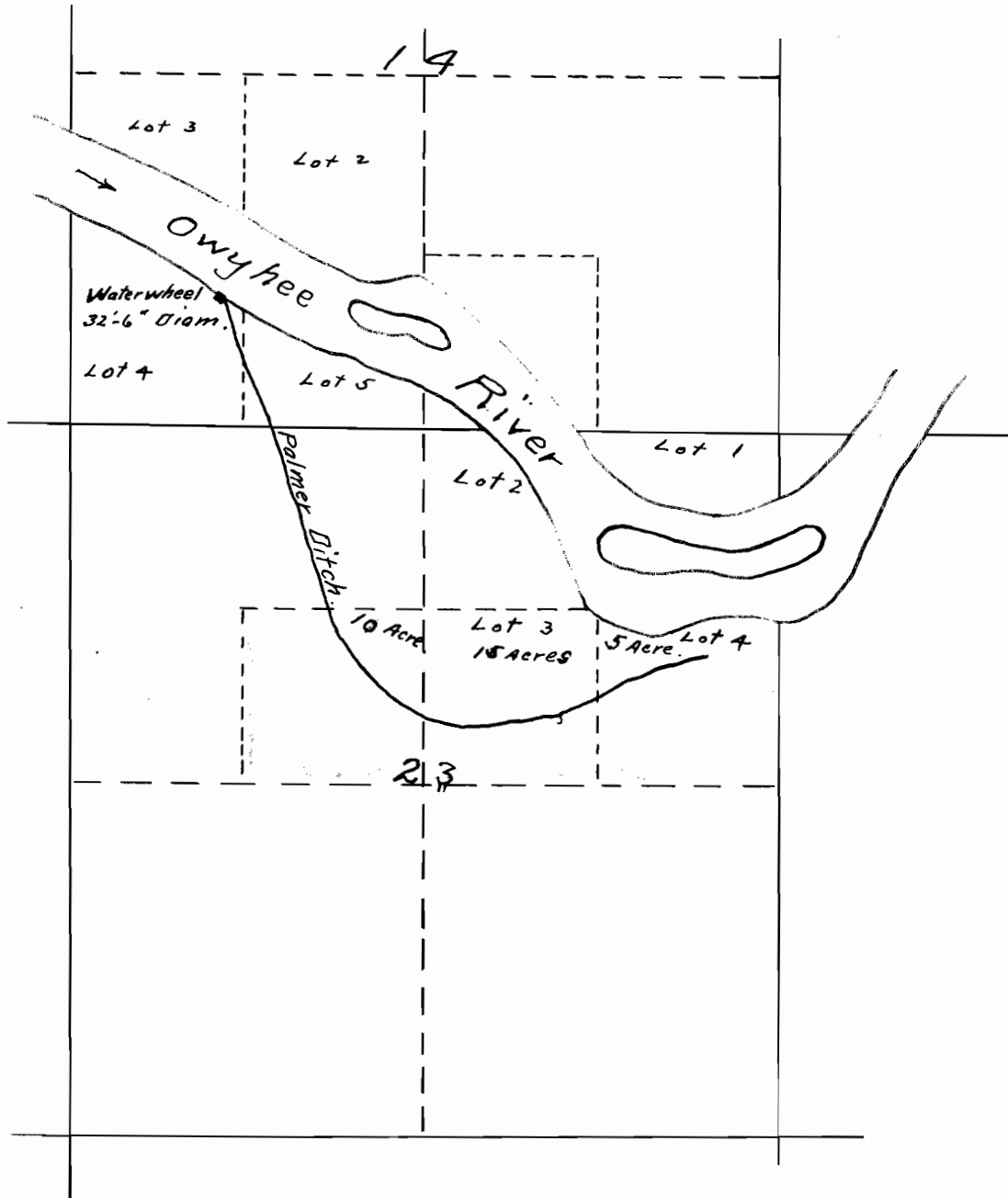


T 26 S R 43 E, WM.



IRRIGATION SYSTEM

Lawrence E. Palmer. App.

SE 1/4 of NW 1/4, Lots 3 & 4 Sec. 23.

Tp. 26 S. R 43 E, WM.

Nov. 8<sup>th</sup> 1912.

Nov. 11, 1912

Application No. 2648

Plan No. 1375