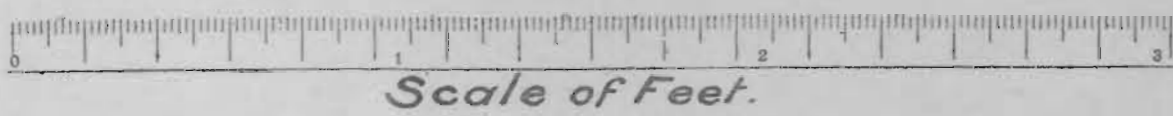
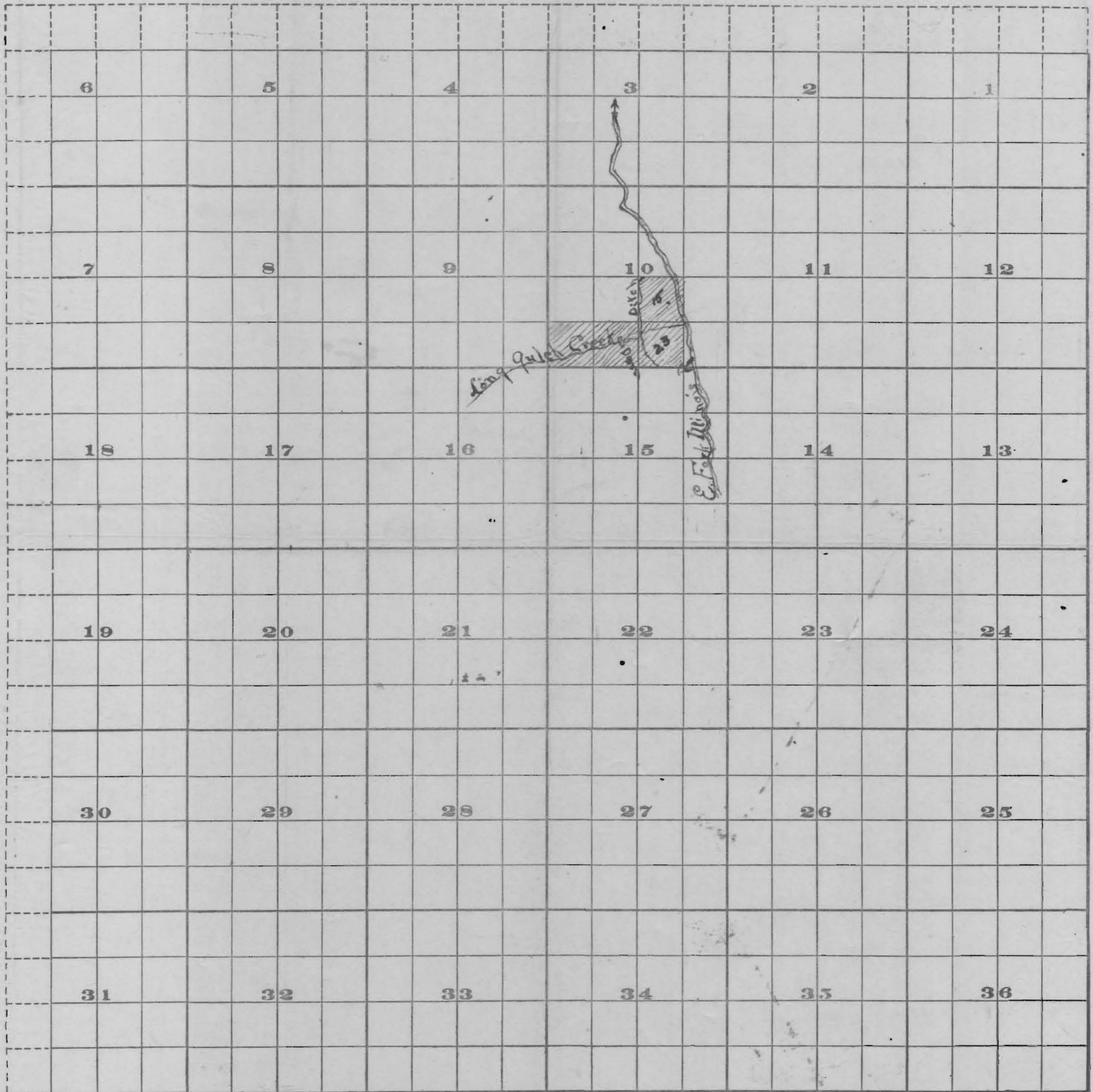


Township 41 8,

Range 8 W.W.M.



FROM OFFICE OF THE STATE ENGINEER, SALEM, OREGON

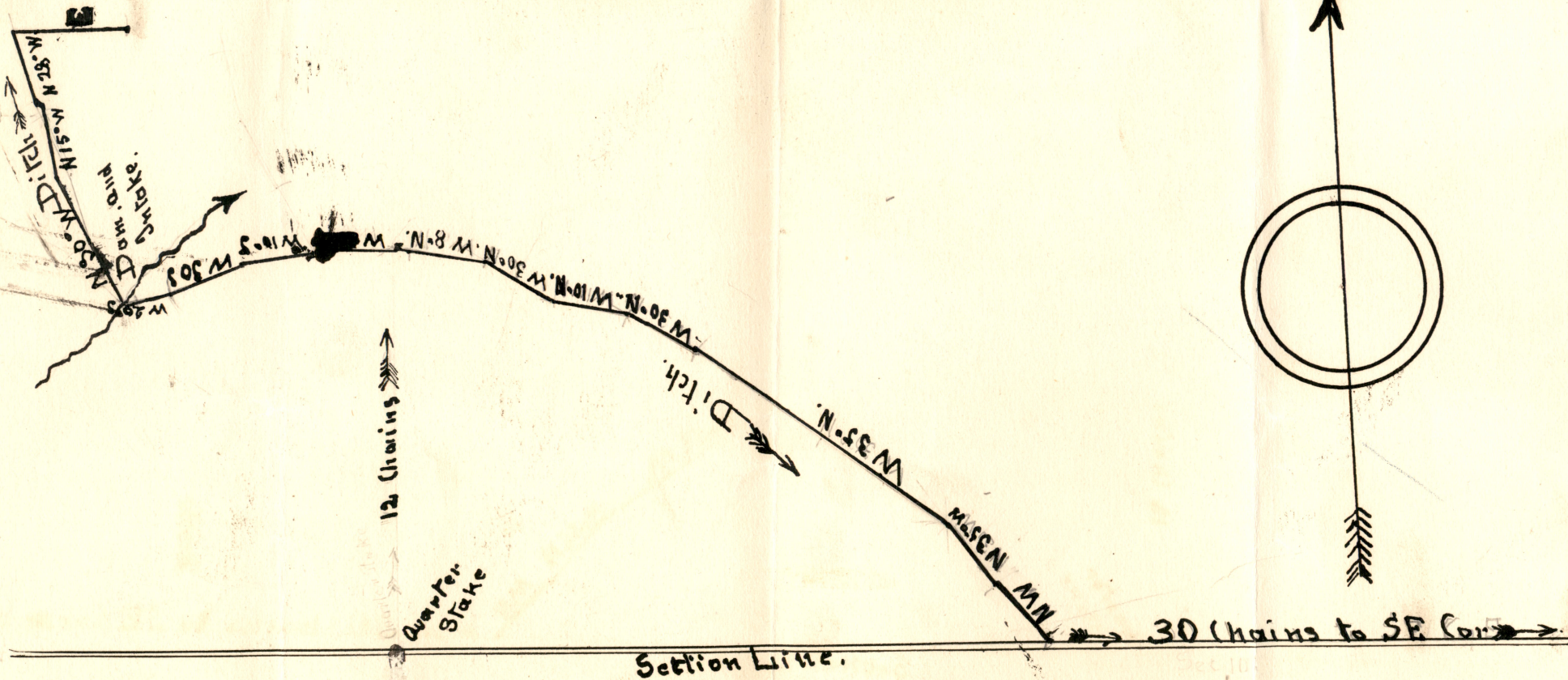
OFFICE OF STATE ENGINEER
RECEIVED
SEP 25 1912
SALEM - OREGON

Application No. 2587
Permit No. 1388

Corrected Map, Recd. June 12-1915

Application No. 2587
Permit No. 1388

Length of Ditch 2000 ft



Chas Barcus Ditch on Sec 10, T. 41, S. R. 8. W.