

FOREST GROVE WATER WORKS

LOCATION OF PIPE LINE
AND ADJACENT ROADS

Scale as shown
R.W. JONES ENGINEER
December 1927.
with additions
August 1939

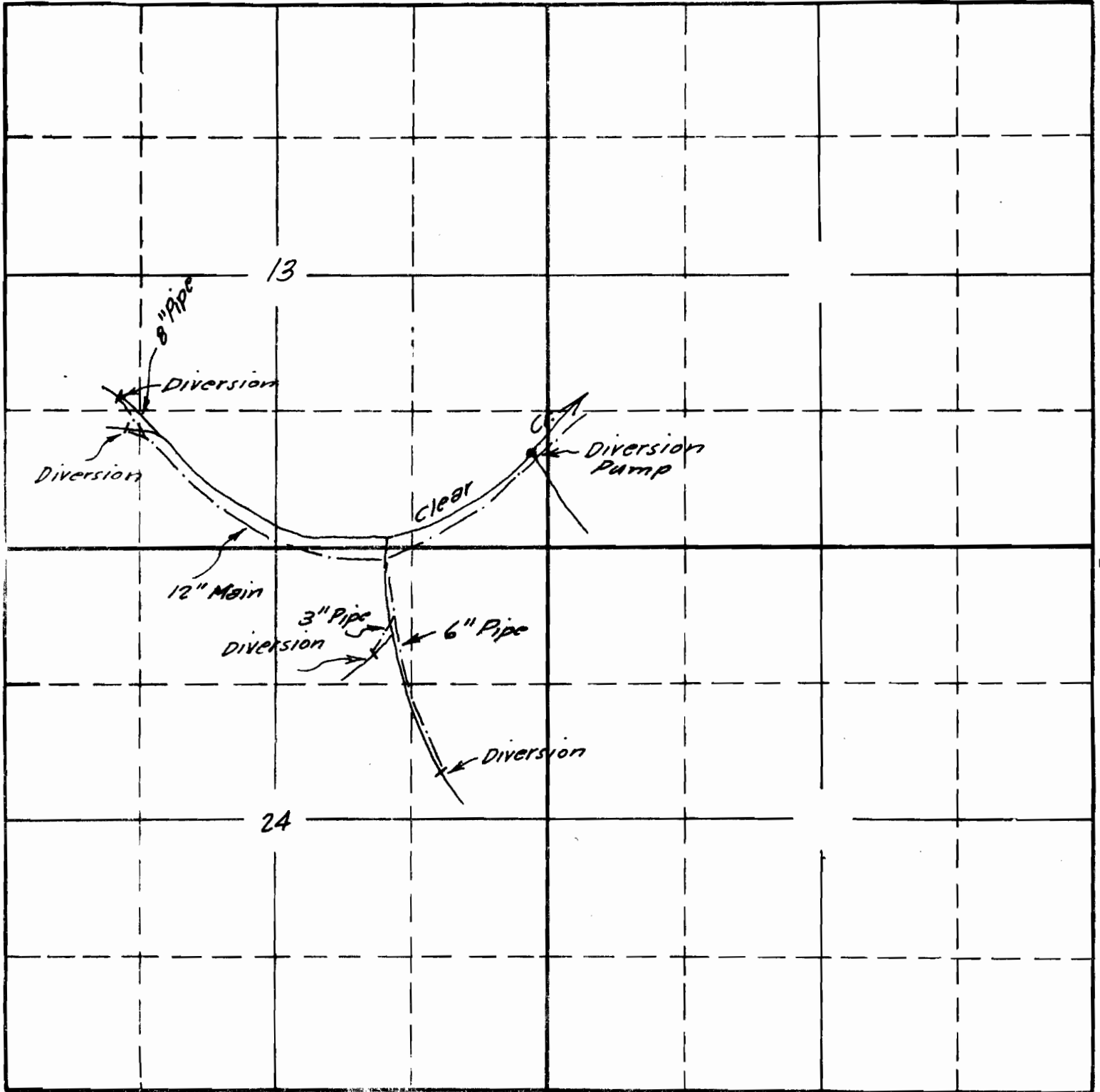
RECEIVED
AUG 2 1939
STATE ENGINEER
SALEM, OREGON

App. No. 18298
Des. No. 13947

SECTION

TOWNSHIP 1N., RANGE 5W., W. M.

North



Sketched from data in field
and application Map June 13 1940 C.O.B.

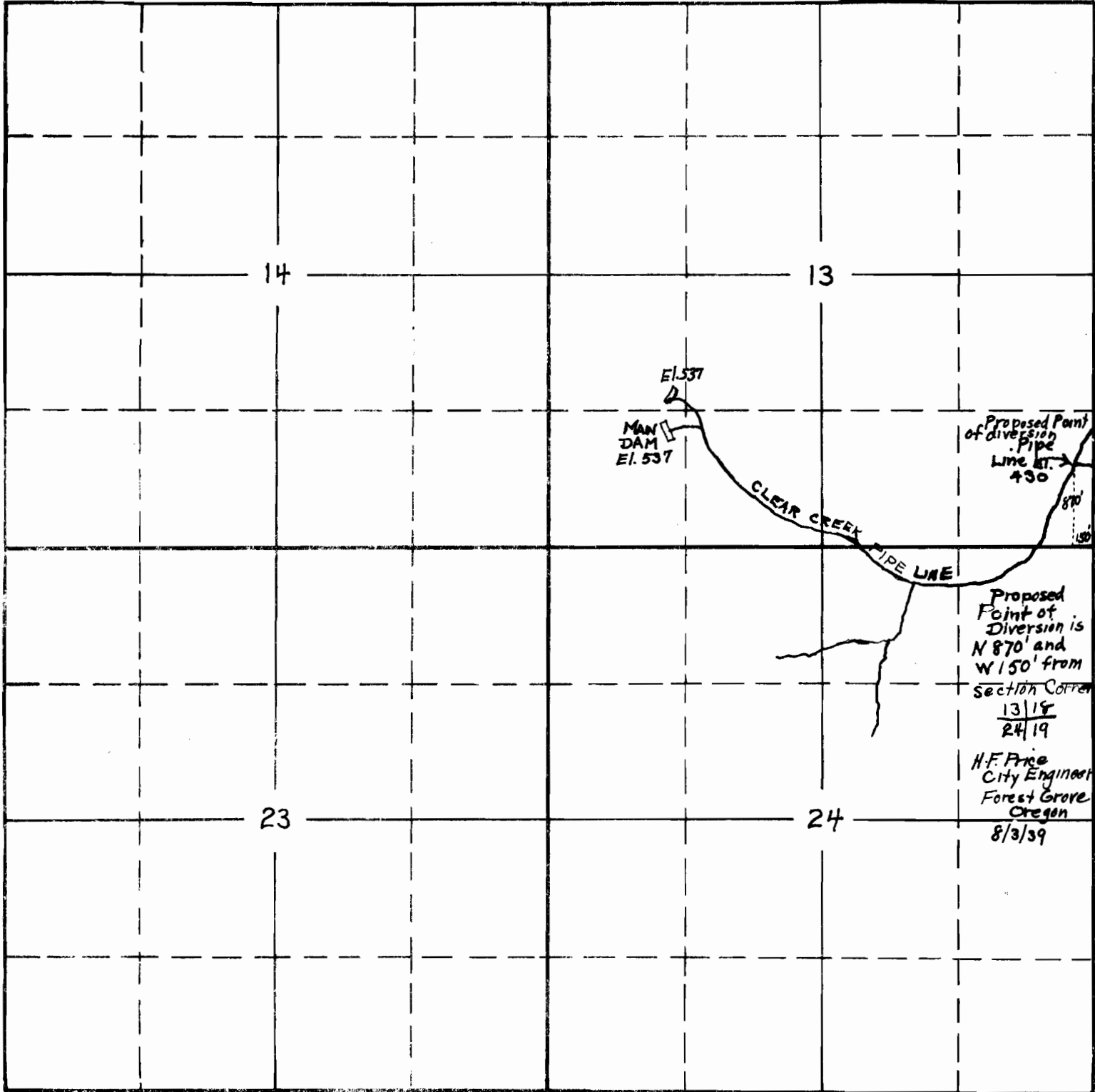
South

APPLICATION No. 18298
15790
PERMIT No. 13944
12034

SECTION

TOWNSHIP 1 N , RANGE 5 W , W. M.

North



West

East

South

RECEIVED

AUG 5 1939

STATE ENGINEER
SALEM, OREGON

APPLICATION No. 18298

PERMIT No. 13944