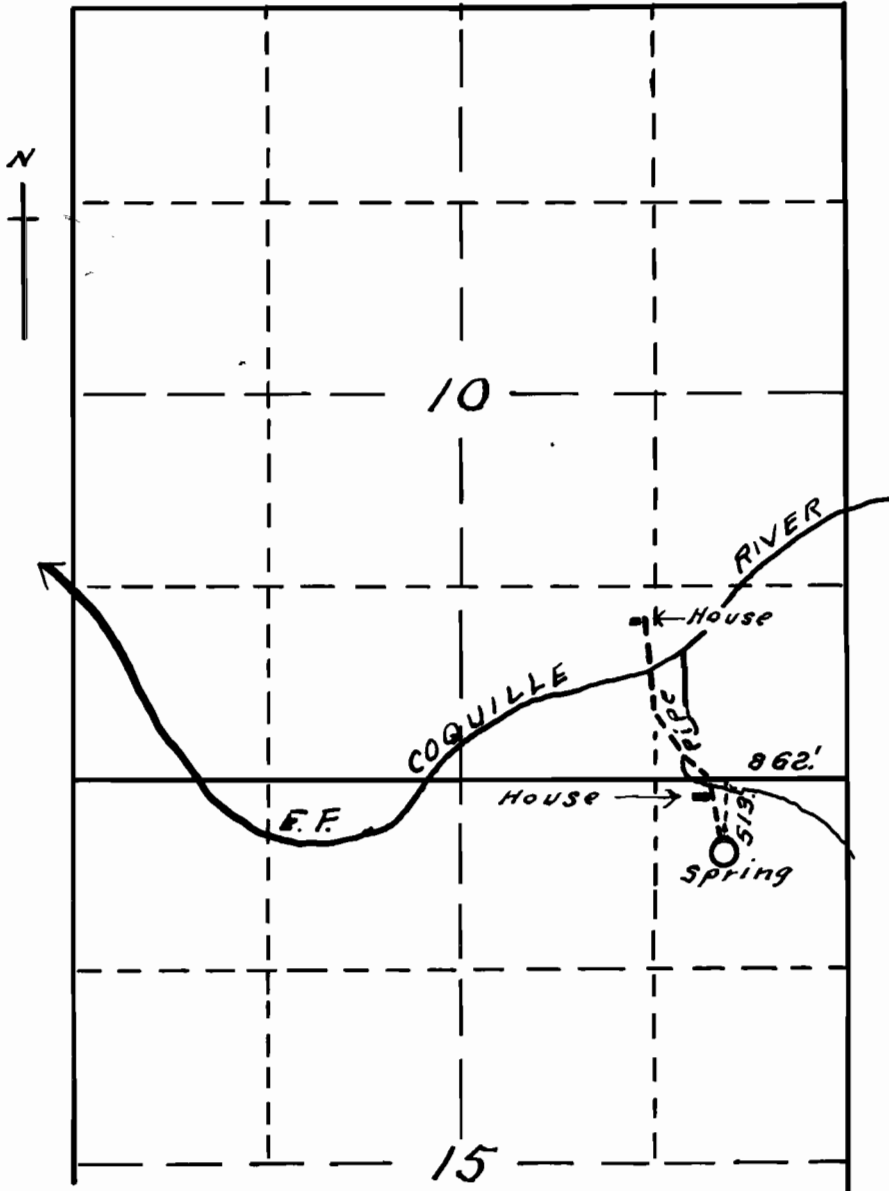


T. 28 S. R. 10 W. W. M



Map accompanying
application of
ALBERT CARVER
to appropriate water.

Scale: 1 in. = 20.0 chs.

I, J. N. Gearhart, of Myrtle Point, Oregon, do hereby certify that this map was made from notes taken during an actual survey made by me on April 2, 1939, and that it correctly represents the works described in the accompanying application, together with the location of streams and other ditches in the immediate vicinity.

J. N. Gearhart
Oregon: No. 183

App. No. 18359
Pls. No.