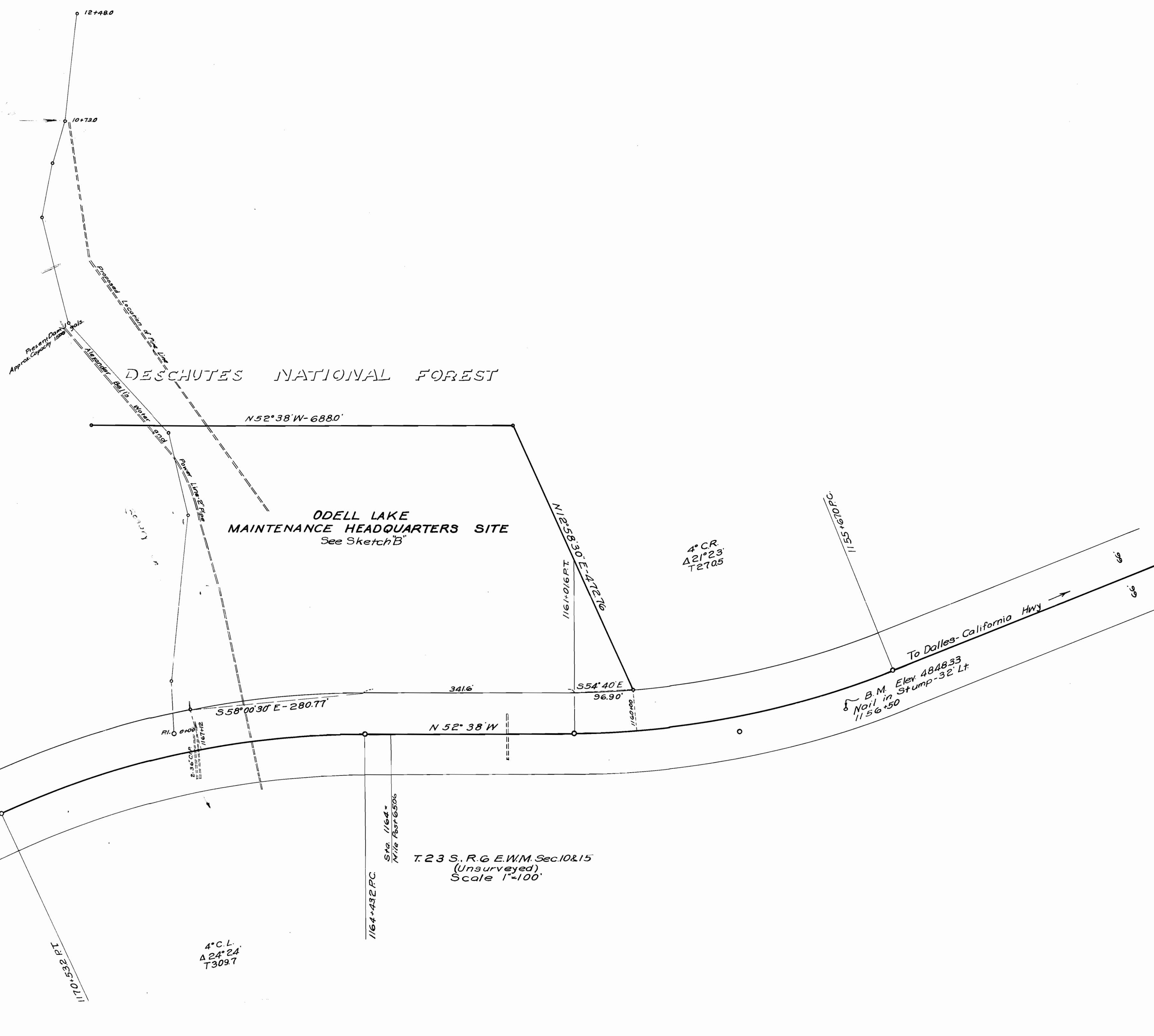
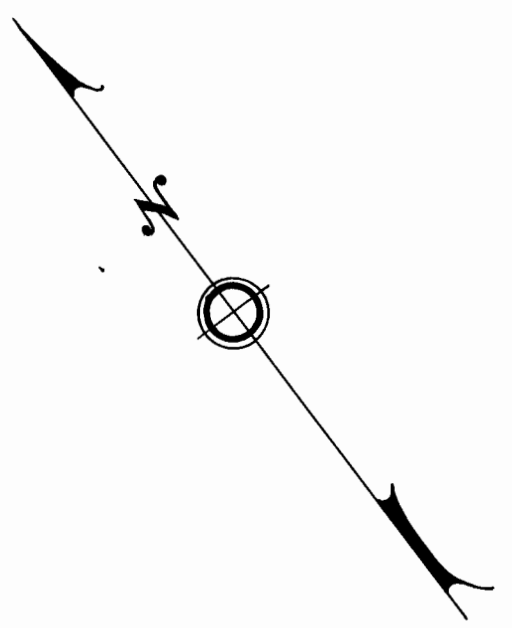


Handwritten notes:
12+480
10+780

Handwritten note:
Proposed Line



OREGON STATE HIGHWAY DEPARTMENT
VICINITY MAP
ODELL LAKE
MAINTENANCE HEADQUARTERS & DAM SITE
KLAMATH COUNTY
Scales As Shown December 1939
Glenn E. Roberts, Res. Eng.