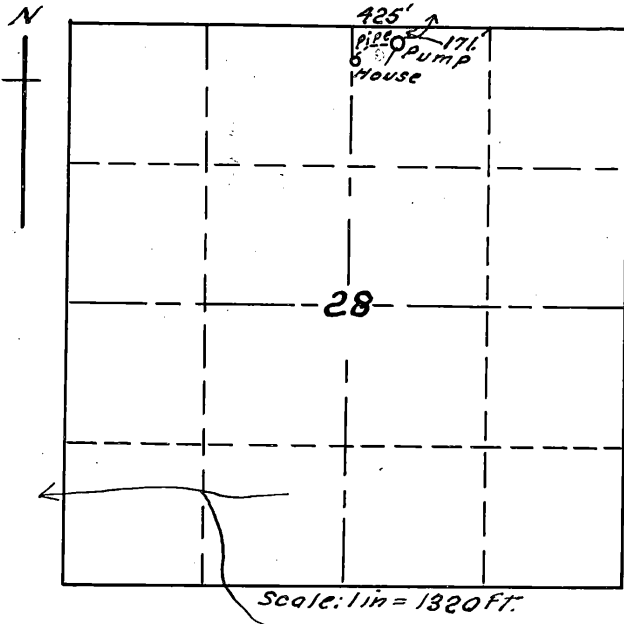


T. 28 S. R. 14 W. W. M.



Map accompanying application of
JOHN HAGA
to appropriate water.

I, J. N. Gearhart, of Myrtle Point, Oregon
do hereby certify that this map was made
from notes taken during an actual
made by me on Jan. 27, 1940, and that it
correctly represents the works described
in the accompanying application,
together with the location of streams
and other ditches in the immediate vicinity.

J. N. Gearhart

18569 OK
17-21

Application No. 18569
Permit No 14128

RECEIVED
FEB 7 1940
STATE ENGINEER
SALEM, OREGON