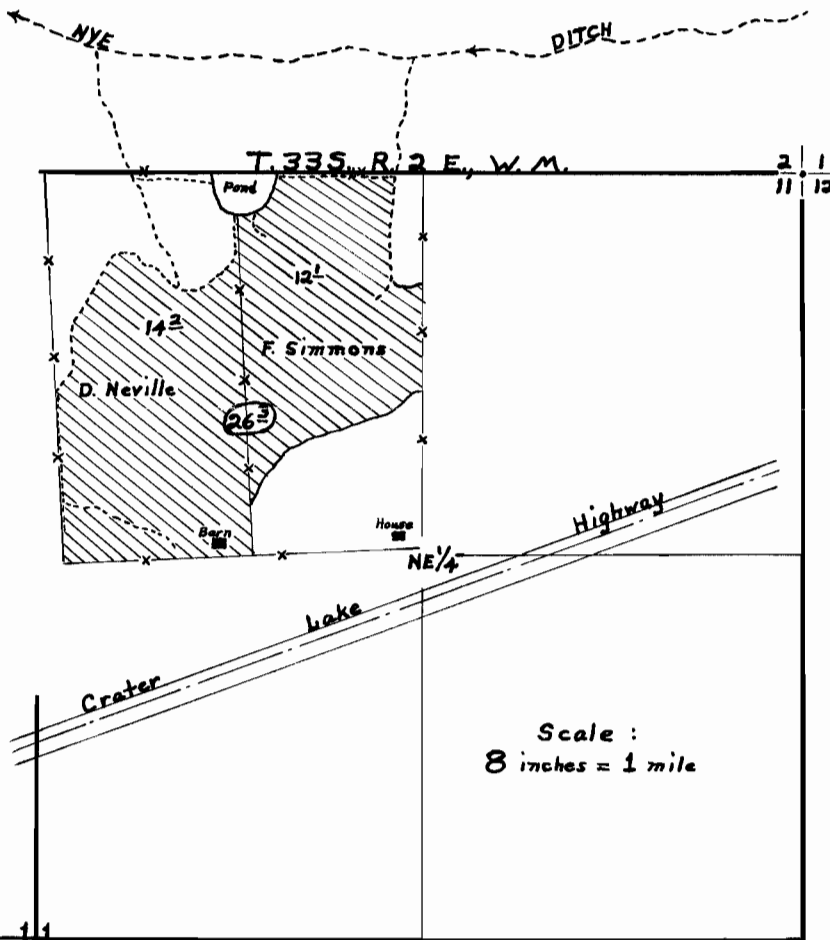
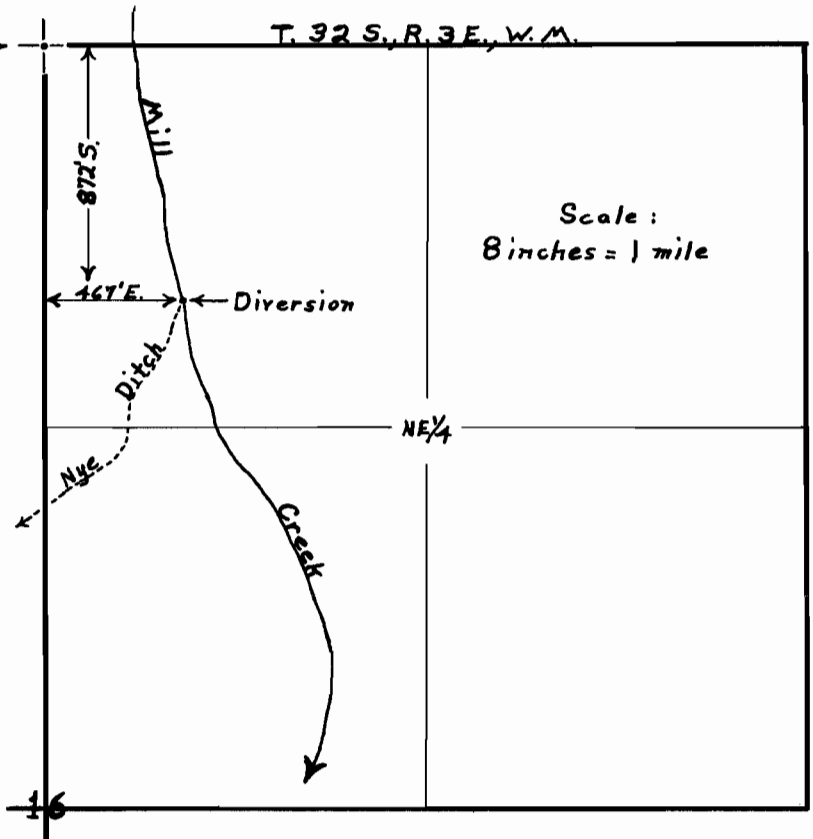


N<sup>1</sup>/<sub>4</sub> Cor. Sec. 16

T. 32 S., R. 3 E., W. M.

Map showing correct point of diversion of Nye Ditch from Mill Creek.

Scale:  
8 inches = 1 mile



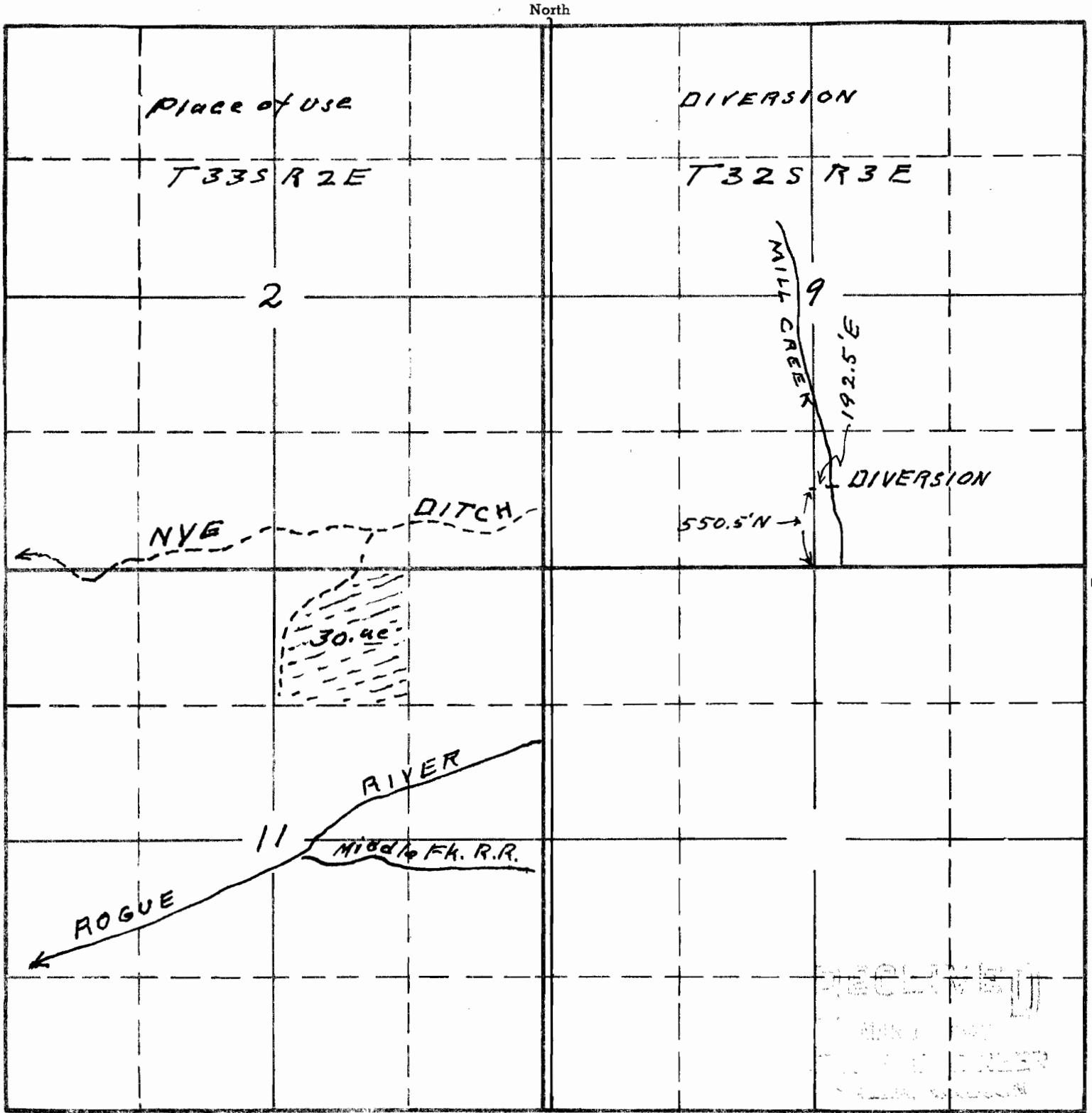
Map to accompany final proof papers of F. W. Simmons.

Plane table survey made October 4, 1955.

David C. Hendrix, Watermaster District No. 15

APPLICATION No. 18610  
PERMIT No. 14200

TOWNSHIP 33 S, RANGE 2 E, W. M.



Sketch showing diversion<sup>South</sup> and place of use to accompany application of Glen Dole for use of waters of Mill Cr for irrigation purposes  
 Made from map furnished by Nelson Nye for his permit No 10448

APPLICATION No. 18610  
 PERMIT No. 14200

This office 3/9/90 *[Signature]*