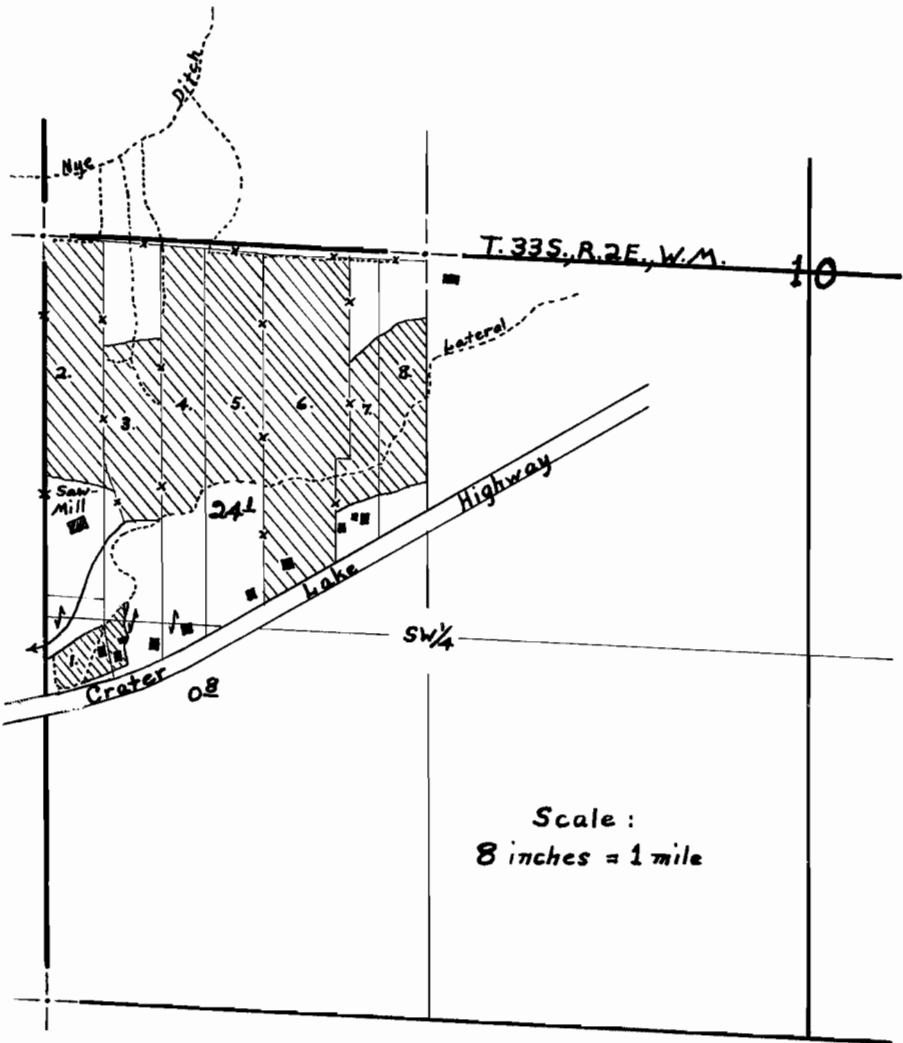
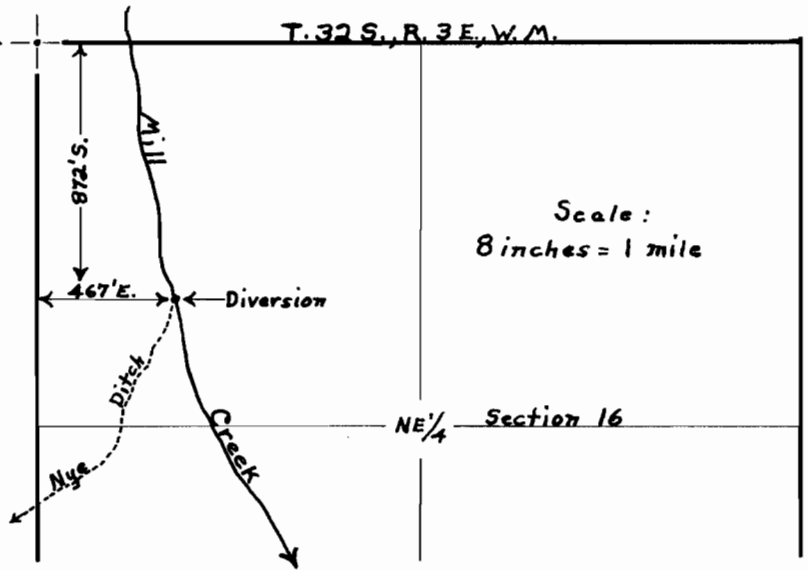


N¹/₄ Cor. Sec. 16 →

T. 32 S., R. 3 E., W. M.

Map showing correct point of diversion of Nye Ditch from Mill Creek.

Scale:
8 inches = 1 mile



1. Jack DeRosier	0.6 ac.
2. Richard Bean	4.0 ac.
3. Eldon Bean	2.7 ac.
4. A.S. Hammon	3.1 ac.
5. Frank Helms	3.7 ac.
6. D.M. Chandler	7.2 ac.
7. Art Dorson	1.5 ac.
8. G.L. Jantzer	2.1 ac.
Total	24.9 ac.

Scale:
8 inches = 1 mile

Map to accompany final papers of
Richard Bean and Associates.

Application No. 18675

Plane table survey made Nov. 10,
1955 and Jan. 17, 1956.

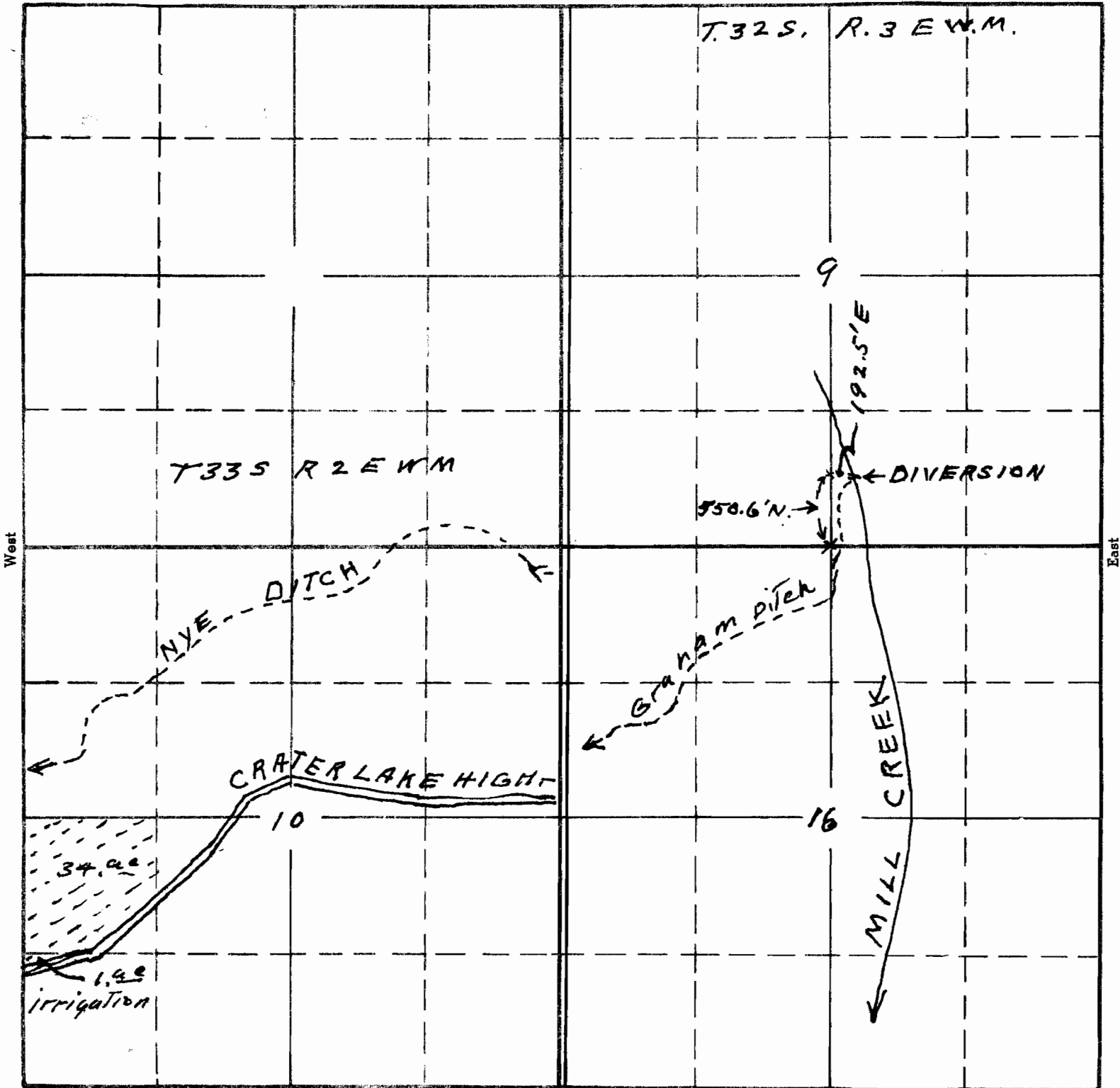
Permit No. 14306

David C. Hendrix, Watermaster.

10

TOWNSHIP 33 S, RANGE 2 E, W. M.

North



Sketch to accompany application of ^{South} Geo. L. Jantzer Lumber Co Inc. for use of waters of Mill Creek for irrigation purposes.

APPLICATION No. 18675
 PERMIT No. 14306

sent in 4/19 with fees

This office 4/15/40 (await fees) *[Signature]*