

North

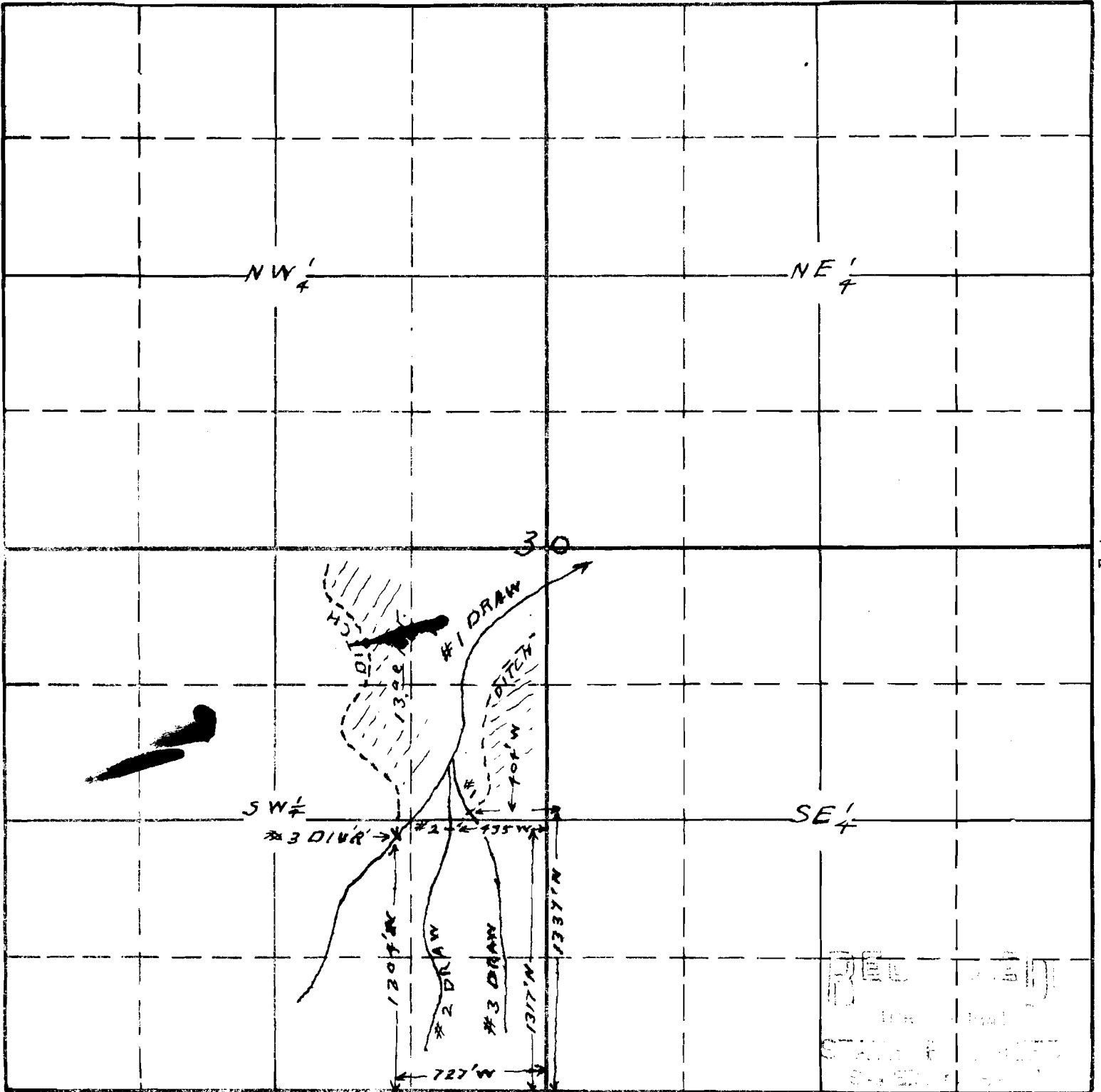
NW 1/4

NE 1/4

SW 1/4

SE 1/4

30



REC
 STATE ENGINEER
 1925

Sketch to accompany application of Henry Kirby for use of seepage and drainage water from #1-#2-#3 Draws for irrigation purposes.
 Measurements from actual survey by C. Z. Boyden Engr.

1925
 APPLICATION No. 19251
 PERMIT No. 14857

This office 3/31/41