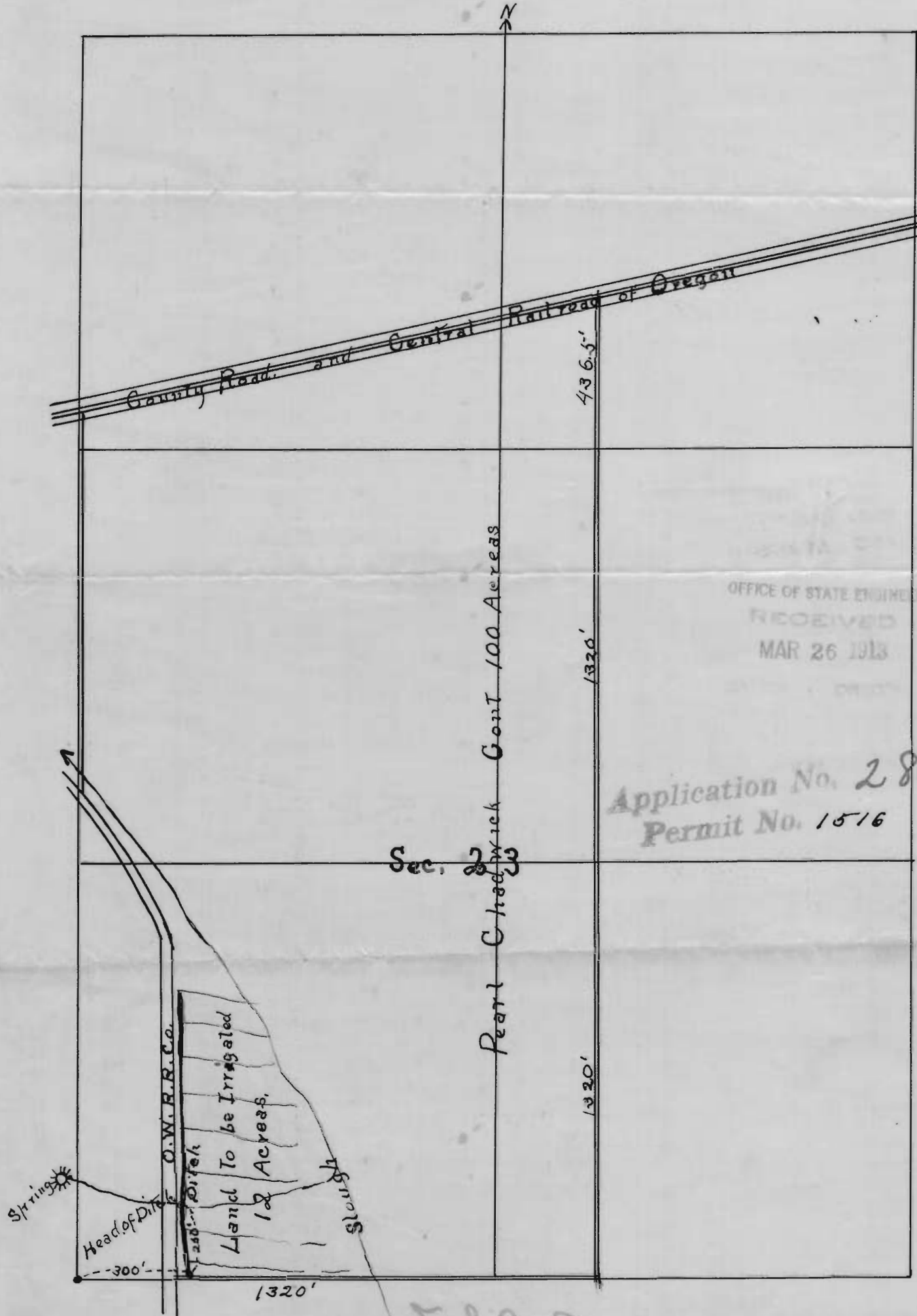


5822

# Chadwick Ditch

Town. 4 South Range 39 E.W.M.



5822

OFFICE OF STATE ENGINEER  
RECEIVED  
MAR 26 1913

Application No. 2850  
Permit No. 1516

Sec. 23

5822 6-1215

RECEIVED  
MAR 26 1913  
OFFICE OF STATE ENGINEER