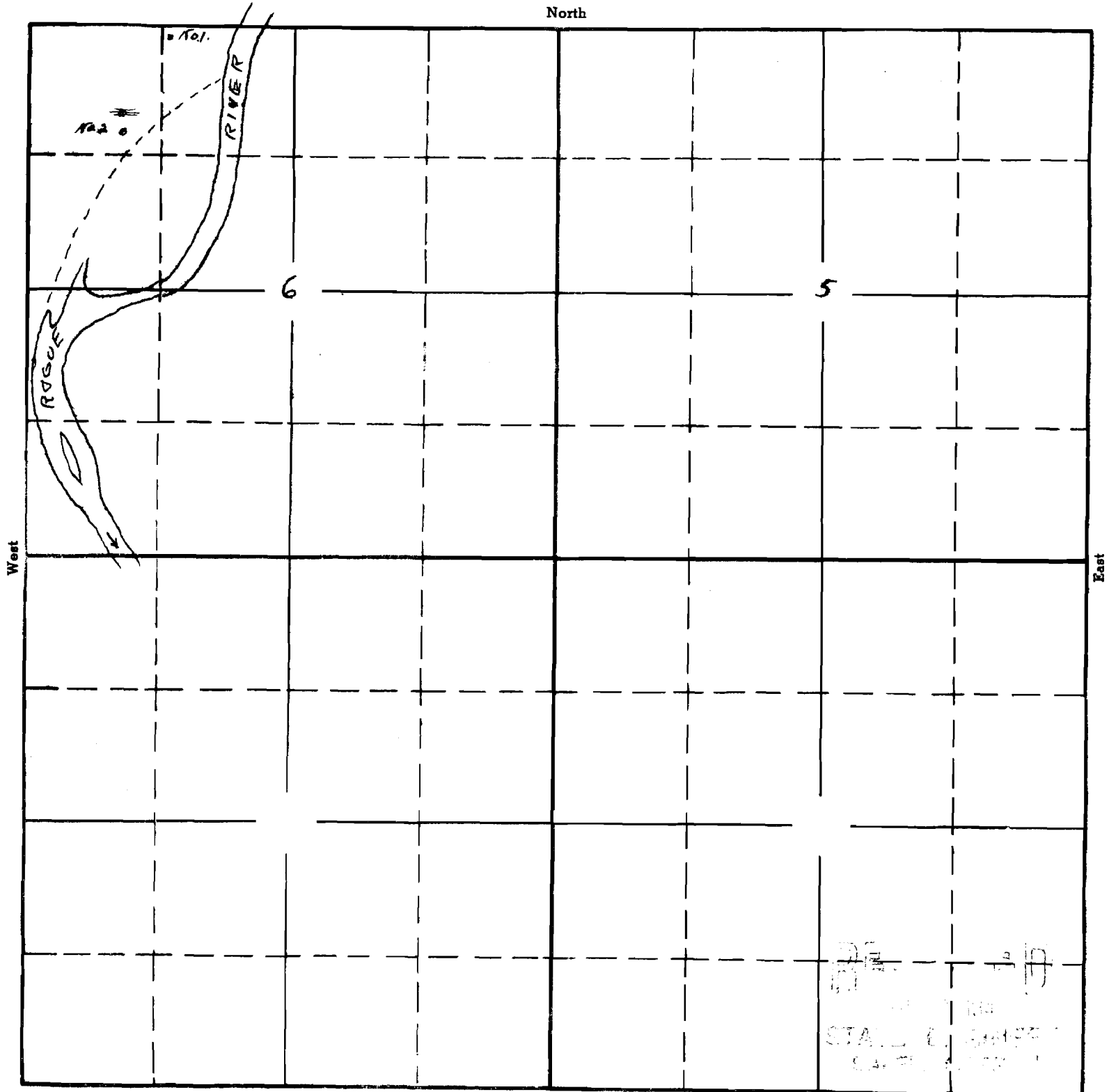


SECTION

TOWNSHIP 36S, RANGE 1W, W. M.



Sketch re B.W. RYAN application

showing location of Rogue River as shown by U.S.G.S. survey made in co-operation with The Cal. Ore. Power Co. in 1923 - see D

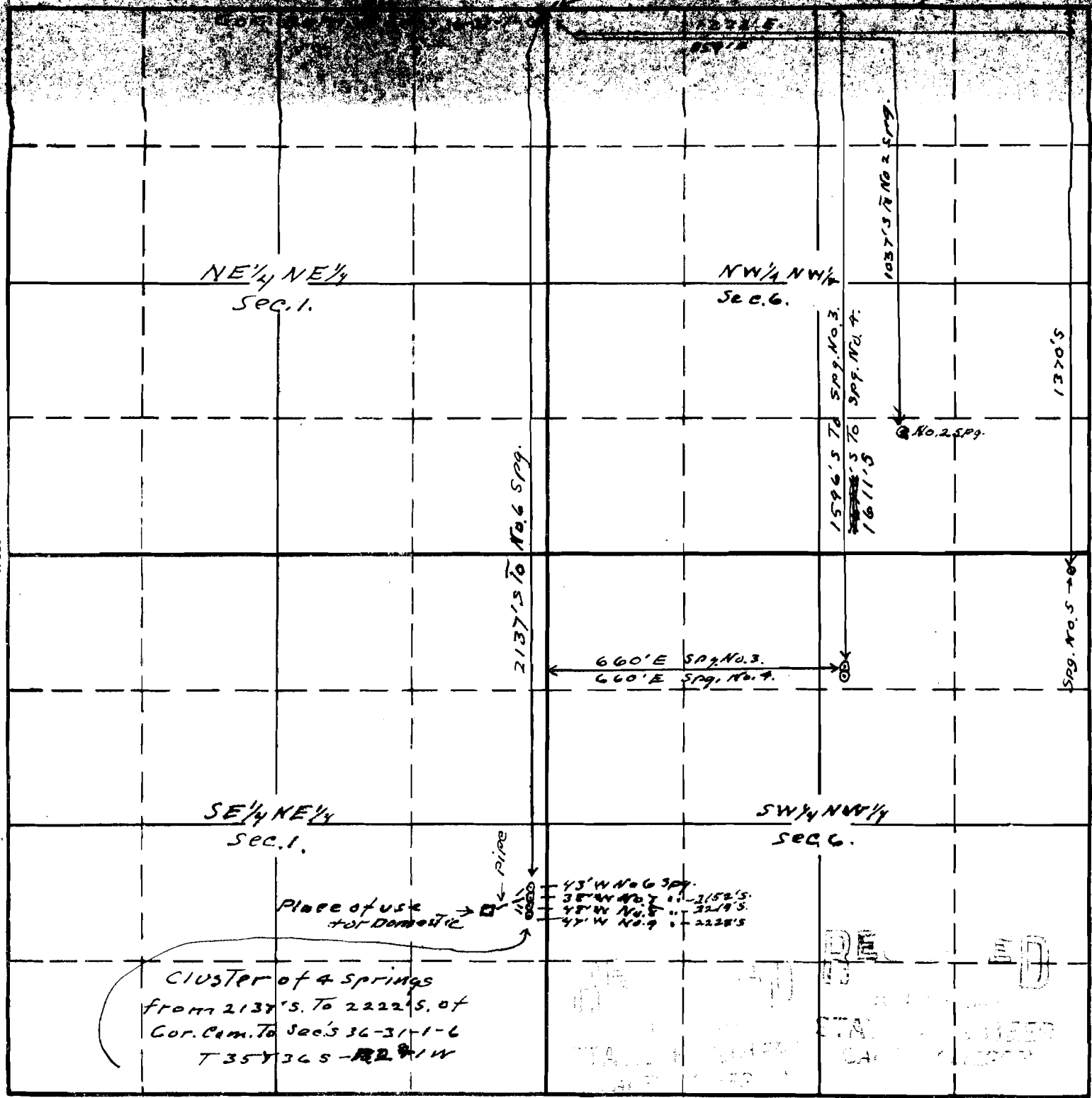
APPLICATION No.  
PERMIT No.

1-6

TOWNSHIP 36 S, RANGE 24 W, M.

T. 36 S., R. 24 W.

1988



Sketch To accompany application of  
 R.W. Ryan for use of 9 spgs on his place  
 for stock and domestic purposes.

APPLICATION No. 19735  
 PERMIT No. 15322

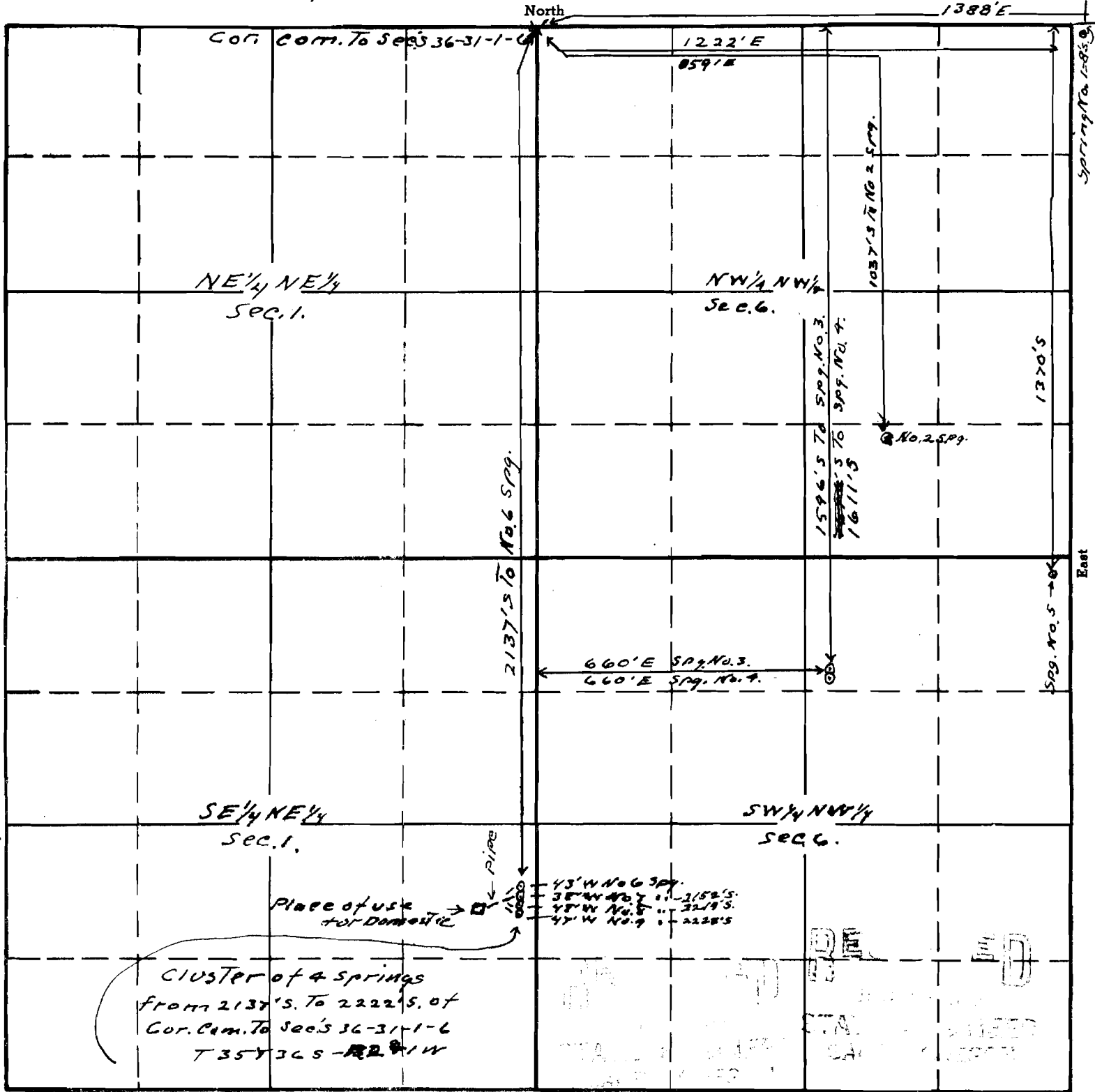
This office 6/26/42

1-6

TOWNSHIP 36 S, RANGE 12 W W. M.

T. 36 S, R. 2 W.

T. 36 S, R. 1 W.



Sketch To accompany application of  
 R.W. Ryan for use of 4 spgs on his place  
 for stock and domestic purposes.

APPLICATION No. 19735  
 PERMIT No. 15322

This office 5/26/42