

FINAL PROOF SURVEY
IN NAME OF
ROCK CREEK DISTRICT IMPROVEMENT CO.

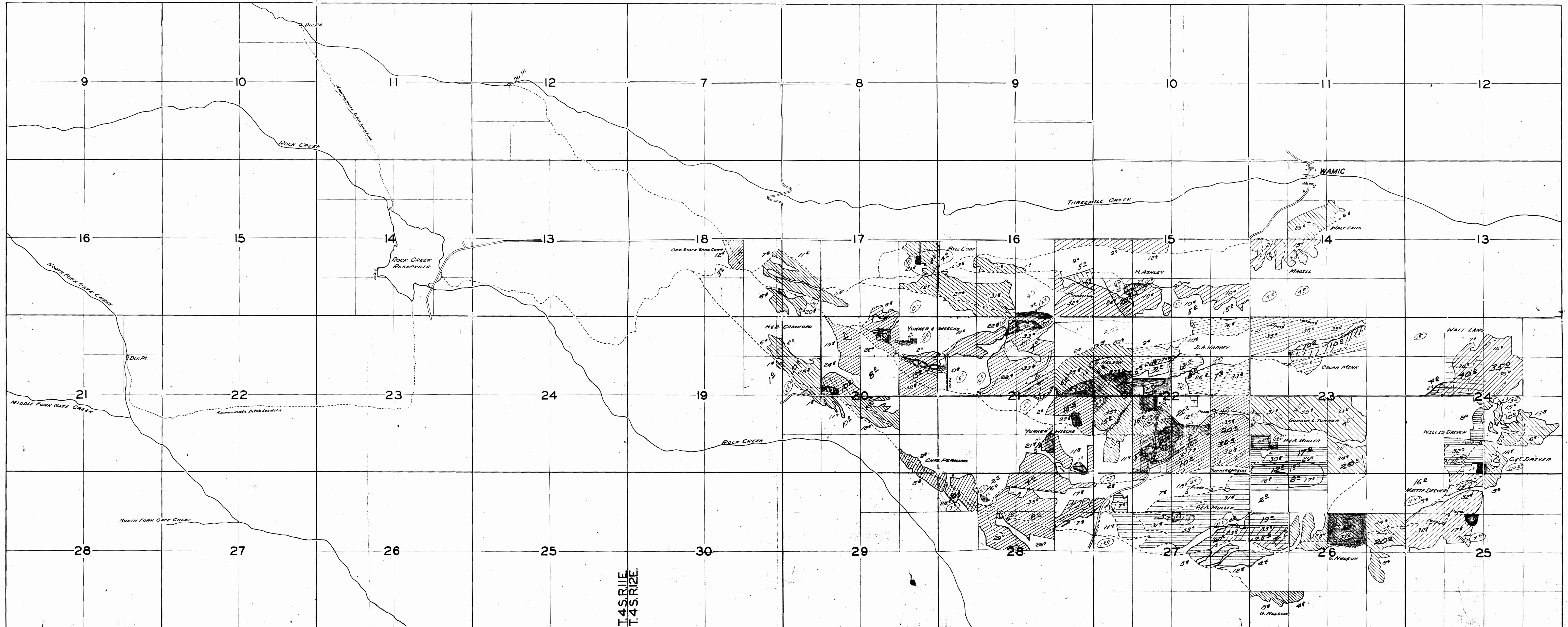
APPLICATION NO. 17838 PERMIT NO. 15519
R-7837 R-780

SURVEYED SEPT. & OCT. 1957
& MARCH 1958

BY R.H. WHITBY

*See map for
location of
survey
Sept. 1957*

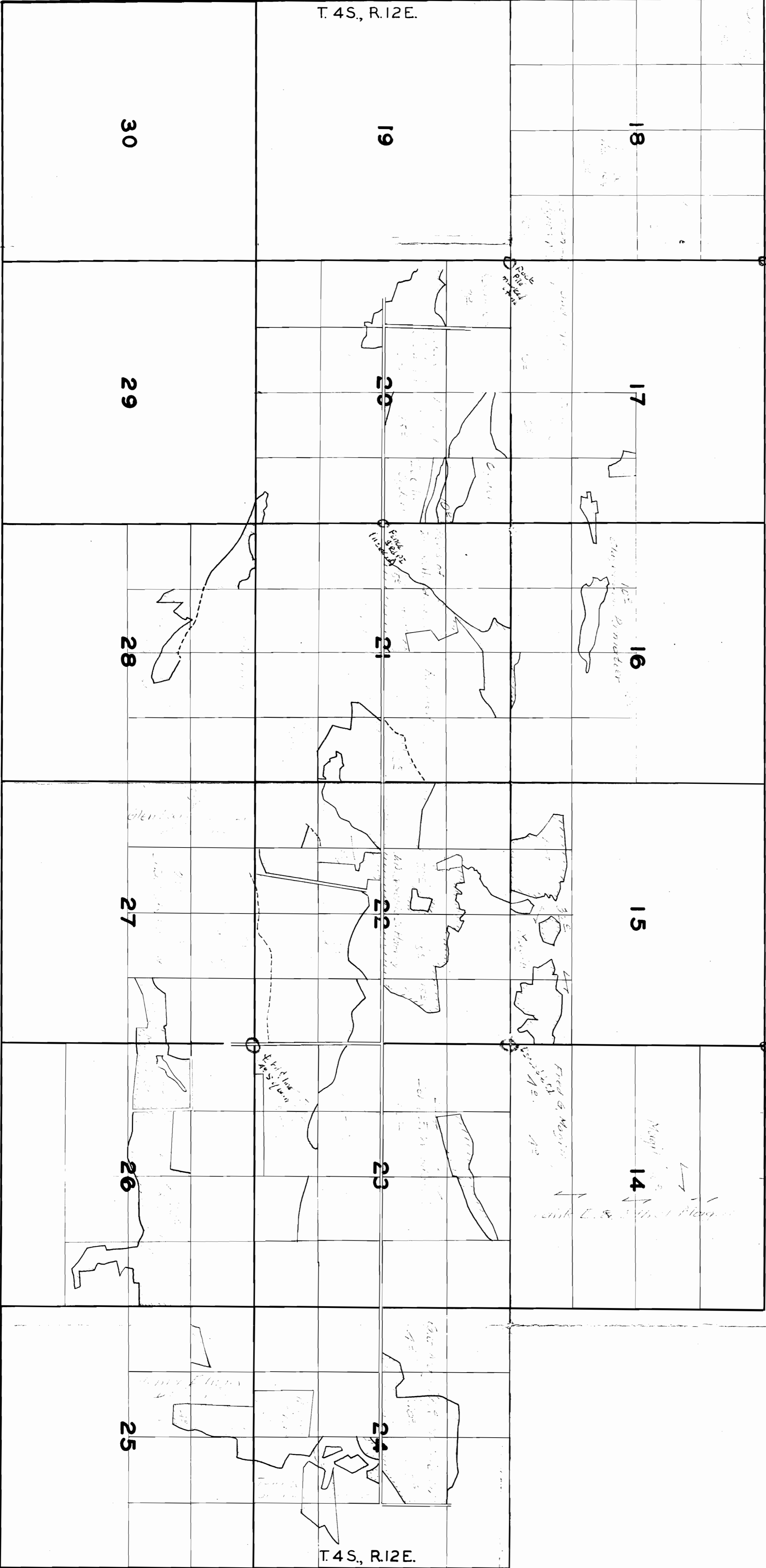
*Sept. 1958
Sept. 1958
Sept. 1958*



T.4 S. R. 1 E.
T.4 S. R. 2 E.

12

T. 4S., R. 11E.



T. 4S., R. 12E.

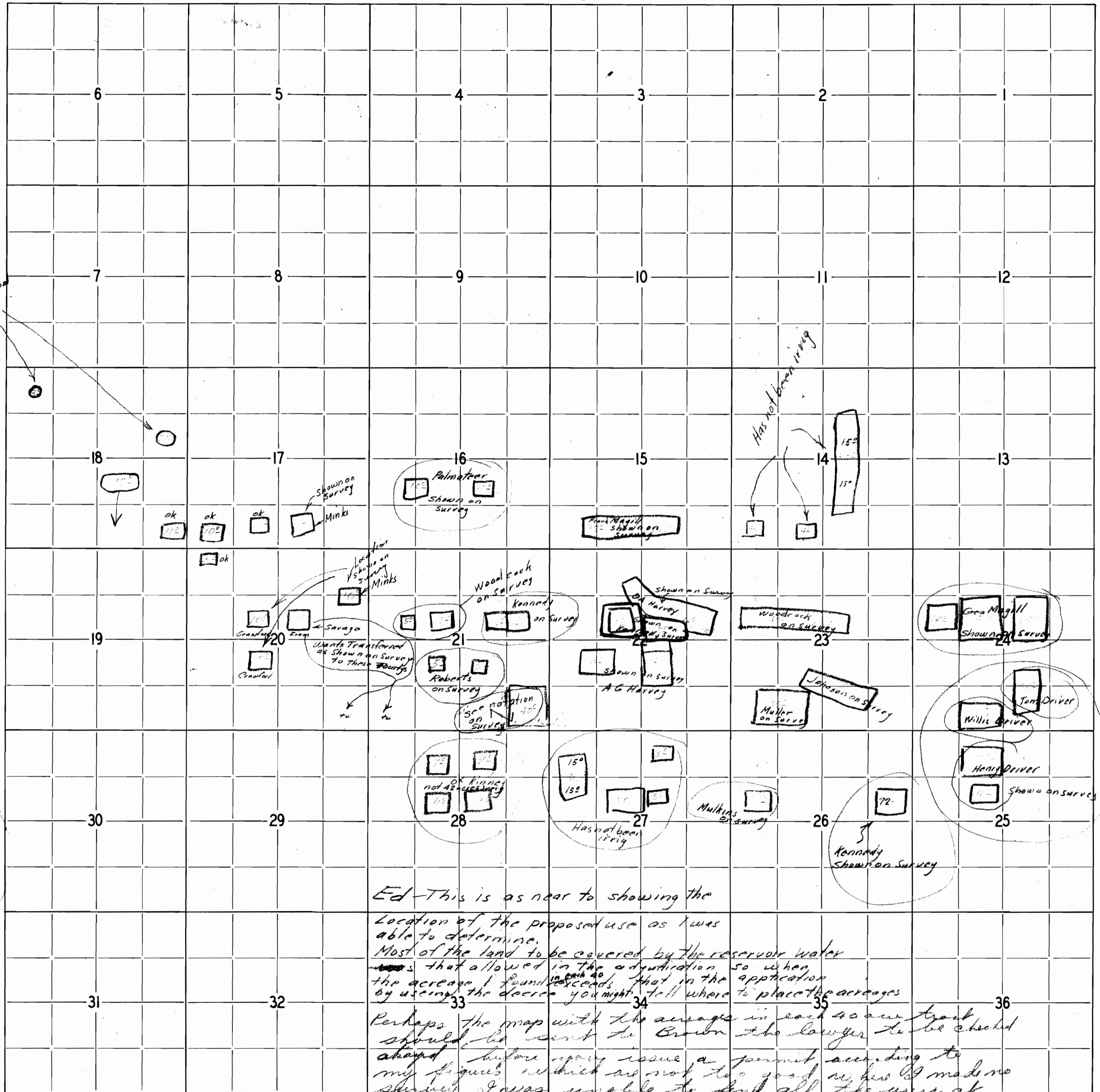
T. 4S., R. 12E.

T. 4S., R. 13E.

19

Rock Creek Dist Improvement Co

Township _____ Range _____ W.M.



above canal from Res

Has not been irrig

Has not been irrig

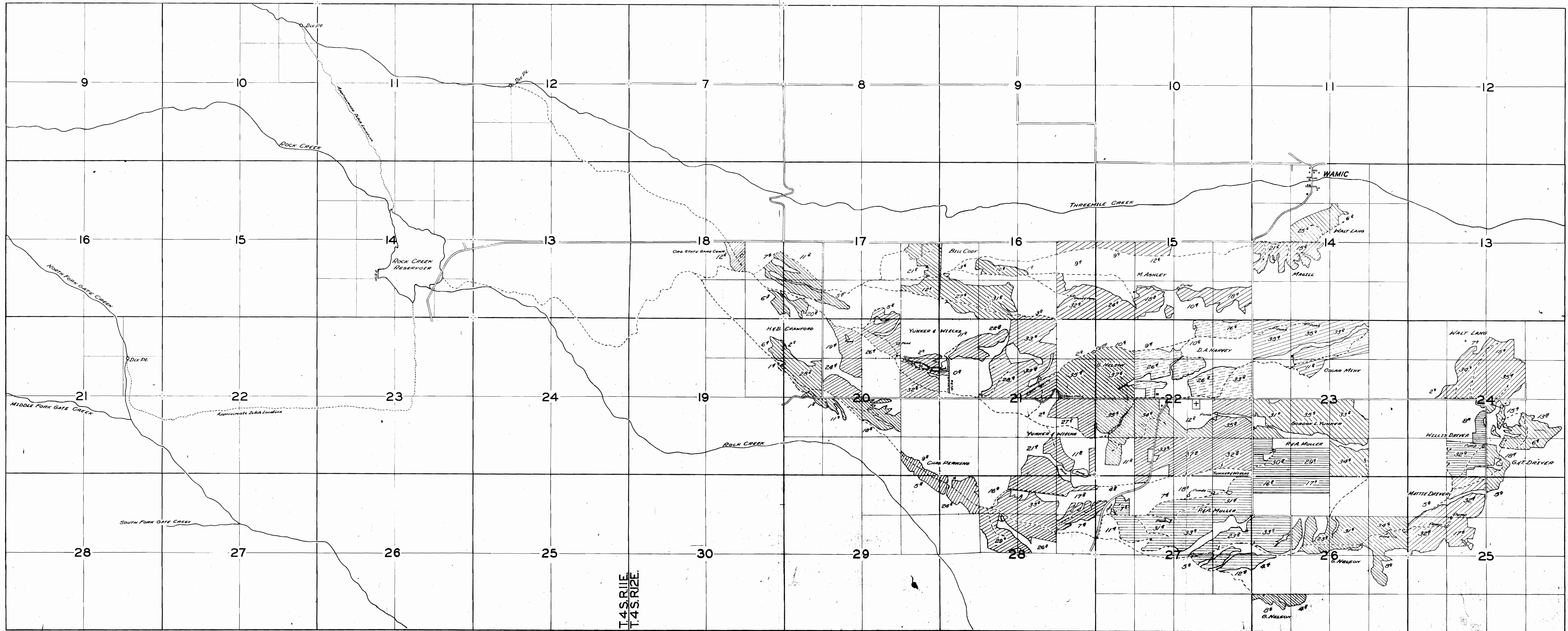
Ed - This is as near to showing the location of the proposed use as I was able to determine. Most of the land to be covered by the reservoir water was that allowed in the adjudication so when the acreage I found exceeds that in the application by using the decree you might tell where to place the acreages. Perhaps the map with the acreage in each section should be sent to Brown the lawyer to be checked ahead before you issue a permit according to my figures which are not too good unless I made no survey. I was unable to find all the users at home and a lot of them were undecided as to what land they would use. The real estate has been covered as yet by Reservoir water so perhaps is premature to check.

FINAL PROOF SURVEY
IN NAME OF
ROCK CREEK DISTRICT IMPROVEMENT CO.

APPLICATION NO. 17838 PERMIT NO. 15519
R-17837 R-780

SURVEYED SEPT. & OCT. 1957
& MARCH 1958

BY R.H. WHITBY





9
Rock Creek

10

11
Feeder Ditch to Dam

12
Round Prairie Ditch
Frank Hammes 2 Ac.

7
Frank Hammes 3 Ac.
Theophile Ditch

16
North Fork Gate Creek
Gate Creek to Rock Creek Ditch

15

14
Ditch

13
Rock and Gate Creek Ditch
Canal from Dam

18
Amy Ball 12 Ac.
Federal Ba 10 Ac.
Vernon Tol 10 Ac.

21
Middle Fork

22
Feeder Ditch to Dam

23
Rock Creek

24
Rock Creek

19
William

28
South Fork

27

26
Gate Creek

25

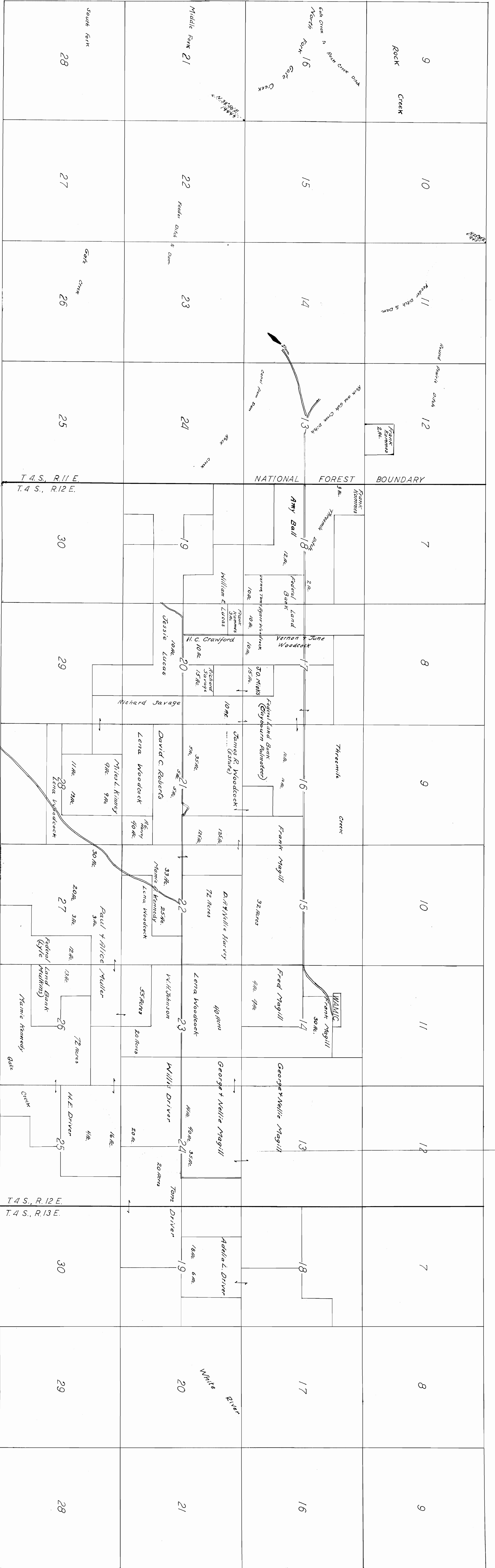
30

T. 4 S., R. 11 E.
T. 4 S., R. 12 E.

N. 38° 50' E. 44.6' 1944'

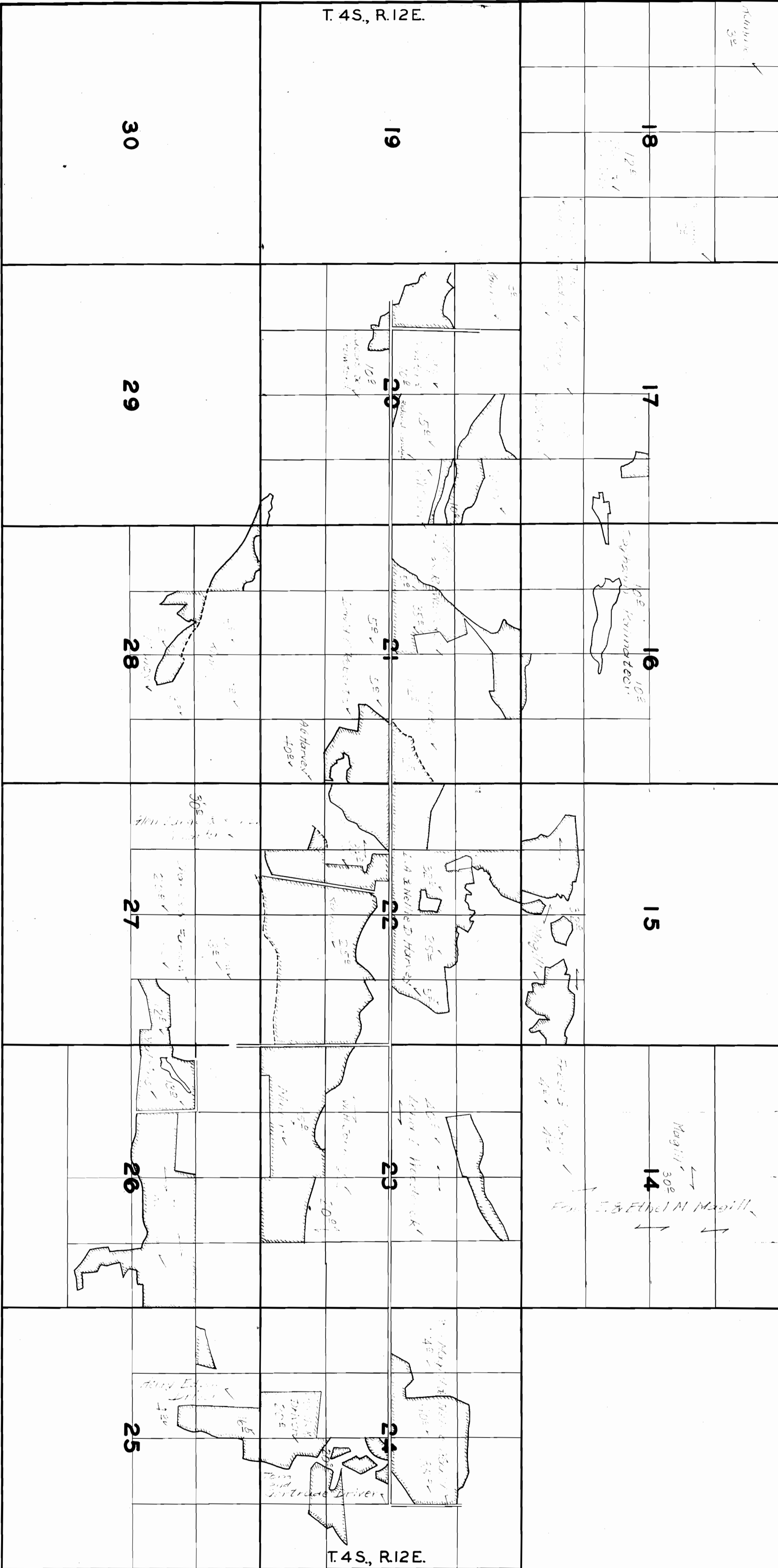
N. 38° 50' E. 44.6' 1944'

NATIONAL FOREST BOUNDARY

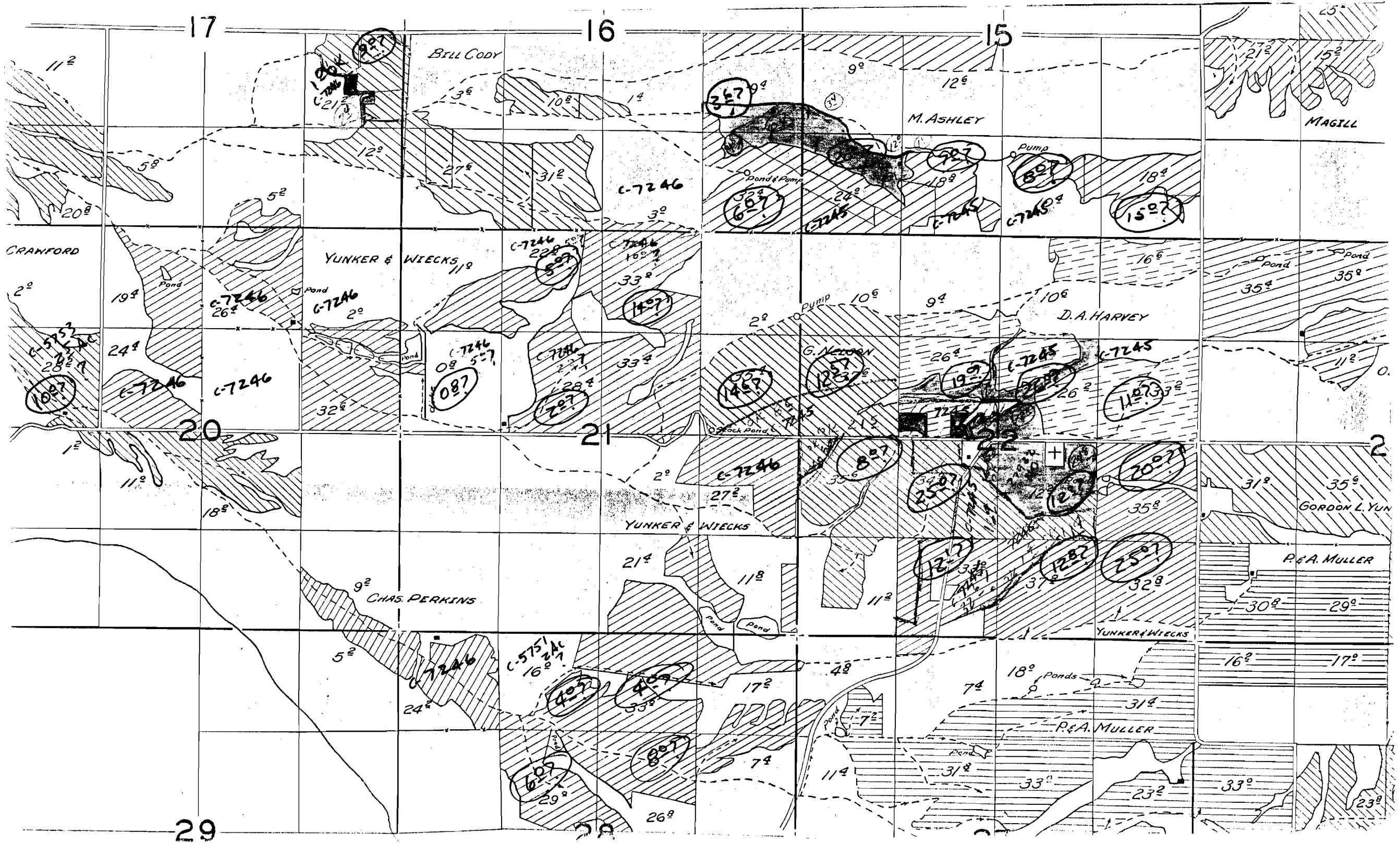


Location of Land Irrigated by Water from Rock Creek Dam.
 Wasco County, Oregon.
 Scale 4" = 1 Mile

12	
T. 4S., R. 11E.	T. 4S., R. 12E.



11/10/41
 12/10/41
 1/10/41
 2/10/41
 3/10/41
 4/10/41
 5/10/41
 6/10/41
 7/10/41
 8/10/41
 9/10/41
 10/10/41
 11/10/41
 12/10/41
 1/11/41
 2/11/41
 3/11/41
 4/11/41
 5/11/41
 6/11/41
 7/11/41
 8/11/41
 9/11/41
 10/11/41
 11/11/41
 12/11/41
 1/12/41
 2/12/41
 3/12/41
 4/12/41
 5/12/41
 6/12/41
 7/12/41
 8/12/41
 9/12/41
 10/12/41
 11/12/41
 12/12/41
 1/13/41
 2/13/41
 3/13/41
 4/13/41
 5/13/41
 6/13/41
 7/13/41
 8/13/41
 9/13/41
 10/13/41
 11/13/41
 12/13/41
 1/14/41
 2/14/41
 3/14/41
 4/14/41
 5/14/41
 6/14/41
 7/14/41
 8/14/41
 9/14/41
 10/14/41
 11/14/41
 12/14/41
 1/15/41
 2/15/41
 3/15/41
 4/15/41
 5/15/41
 6/15/41
 7/15/41
 8/15/41
 9/15/41
 10/15/41
 11/15/41
 12/15/41
 1/16/41
 2/16/41
 3/16/41
 4/16/41
 5/16/41
 6/16/41
 7/16/41
 8/16/41
 9/16/41
 10/16/41
 11/16/41
 12/16/41
 1/17/41
 2/17/41
 3/17/41
 4/17/41
 5/17/41
 6/17/41
 7/17/41
 8/17/41
 9/17/41
 10/17/41
 11/17/41
 12/17/41
 1/18/41
 2/18/41
 3/18/41
 4/18/41
 5/18/41
 6/18/41
 7/18/41
 8/18/41
 9/18/41
 10/18/41
 11/18/41
 12/18/41
 1/19/41
 2/19/41
 3/19/41
 4/19/41
 5/19/41
 6/19/41
 7/19/41
 8/19/41
 9/19/41
 10/19/41
 11/19/41
 12/19/41
 1/20/41
 2/20/41
 3/20/41
 4/20/41
 5/20/41
 6/20/41
 7/20/41
 8/20/41
 9/20/41
 10/20/41
 11/20/41
 12/20/41
 1/21/41
 2/21/41
 3/21/41
 4/21/41
 5/21/41
 6/21/41
 7/21/41
 8/21/41
 9/21/41
 10/21/41
 11/21/41
 12/21/41
 1/22/41
 2/22/41
 3/22/41
 4/22/41
 5/22/41
 6/22/41
 7/22/41
 8/22/41
 9/22/41
 10/22/41
 11/22/41
 12/22/41
 1/23/41
 2/23/41
 3/23/41
 4/23/41
 5/23/41
 6/23/41
 7/23/41
 8/23/41
 9/23/41
 10/23/41
 11/23/41
 12/23/41
 1/24/41
 2/24/41
 3/24/41
 4/24/41
 5/24/41
 6/24/41
 7/24/41
 8/24/41
 9/24/41
 10/24/41
 11/24/41
 12/24/41
 1/25/41
 2/25/41
 3/25/41
 4/25/41
 5/25/41
 6/25/41
 7/25/41
 8/25/41
 9/25/41
 10/25/41
 11/25/41
 12/25/41
 1/26/41
 2/26/41
 3/26/41
 4/26/41
 5/26/41
 6/26/41
 7/26/41
 8/26/41
 9/26/41
 10/26/41
 11/26/41
 12/26/41
 1/27/41
 2/27/41
 3/27/41
 4/27/41
 5/27/41
 6/27/41
 7/27/41
 8/27/41
 9/27/41
 10/27/41
 11/27/41
 12/27/41
 1/28/41
 2/28/41
 3/28/41
 4/28/41
 5/28/41
 6/28/41
 7/28/41
 8/28/41
 9/28/41
 10/28/41
 11/28/41
 12/28/41
 1/29/41
 2/29/41
 3/29/41
 4/29/41
 5/29/41
 6/29/41
 7/29/41
 8/29/41
 9/29/41
 10/29/41
 11/29/41
 12/29/41
 1/30/41
 2/30/41
 3/30/41
 4/30/41
 5/30/41
 6/30/41
 7/30/41
 8/30/41
 9/30/41
 10/30/41
 11/30/41
 12/30/41



17

16

15

Bill Cody

M. Ashley

MAGILL

YUNKER & WIECK'S

D.A. HARVEY

YUNKER & WIECK'S

GORDON L. YUN

CHAS. PERKINS

P. & A. MULLER

YUNKER & WIECK'S

P. & A. MULLER

29

28

27

26

25

24

23

22

21

20

19

18

17

16

15

14

13

12

11

10

9

8

7

6

5

4

3

2

1

3²

10²

1²

9²

12²

21²

15²

11²

5²

12²

27²

31²

3²

2²

9²

18²

18²

15²

CRAWFORD

19²

26²

2²

2²

08²

33²

33²

2²

10²

9²

10²

16²

35²

35²

28²

24²

26²

32²

08²

28²

33²

2²

12²

26²

26²

11²

11²

20

21

2

1²

11²

18²

2²

27²

8²

25²

12²

20²

31²

35²

9²

24²

16²

21²

11²

11²

33²

37²

32²

30²

29²

5²

24²

16²

40²

33²

17²

48²

74²

18²

16²

17²

60²

20²

80²

74²

114²

31²

33²

33²

23²

23²