

7992

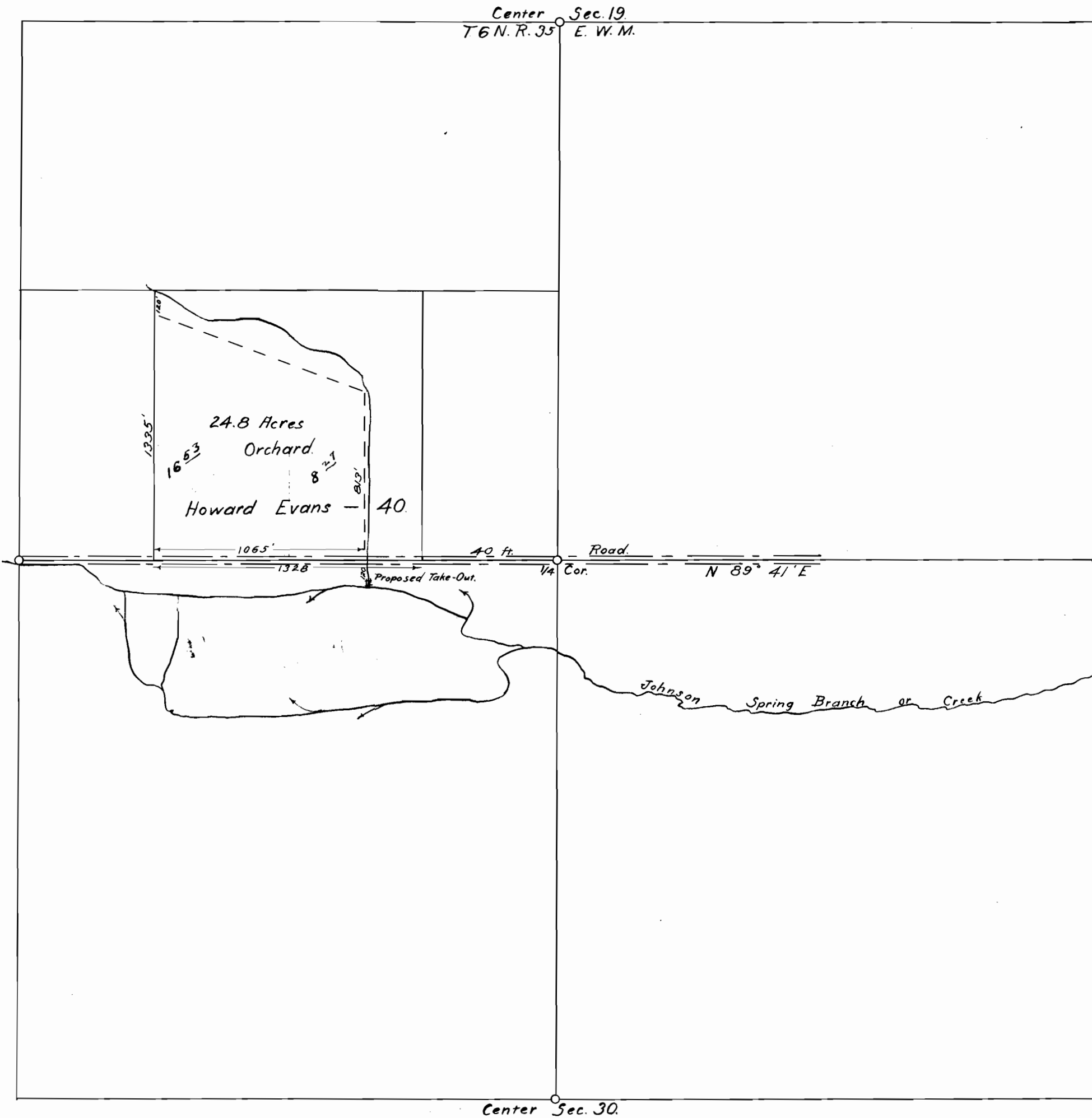
7993

7993

7993

7993

7993



# MAP

Showing

Proposed Take-Out From Spring Branch  
[Johnson Creek]  
For

Lands of Howard Evans.

Scale, 1" = 528'

April 21, 1913.

Application No. 2997  
Permit No. 1581

I, L. A. Reineman of Freewater, Oregon, do hereby certify that this map was made from notes taken during an actual survey made by me on April 21, in 1913, and that it correctly represents the works described in the accompanying application together with the location of streams and other ditches in the immediate vicinity and has written thereon the area in each smallest legal subdivision which it is proposed to irrigate.

L. A. Reineman.  
Surveyor.

7993