

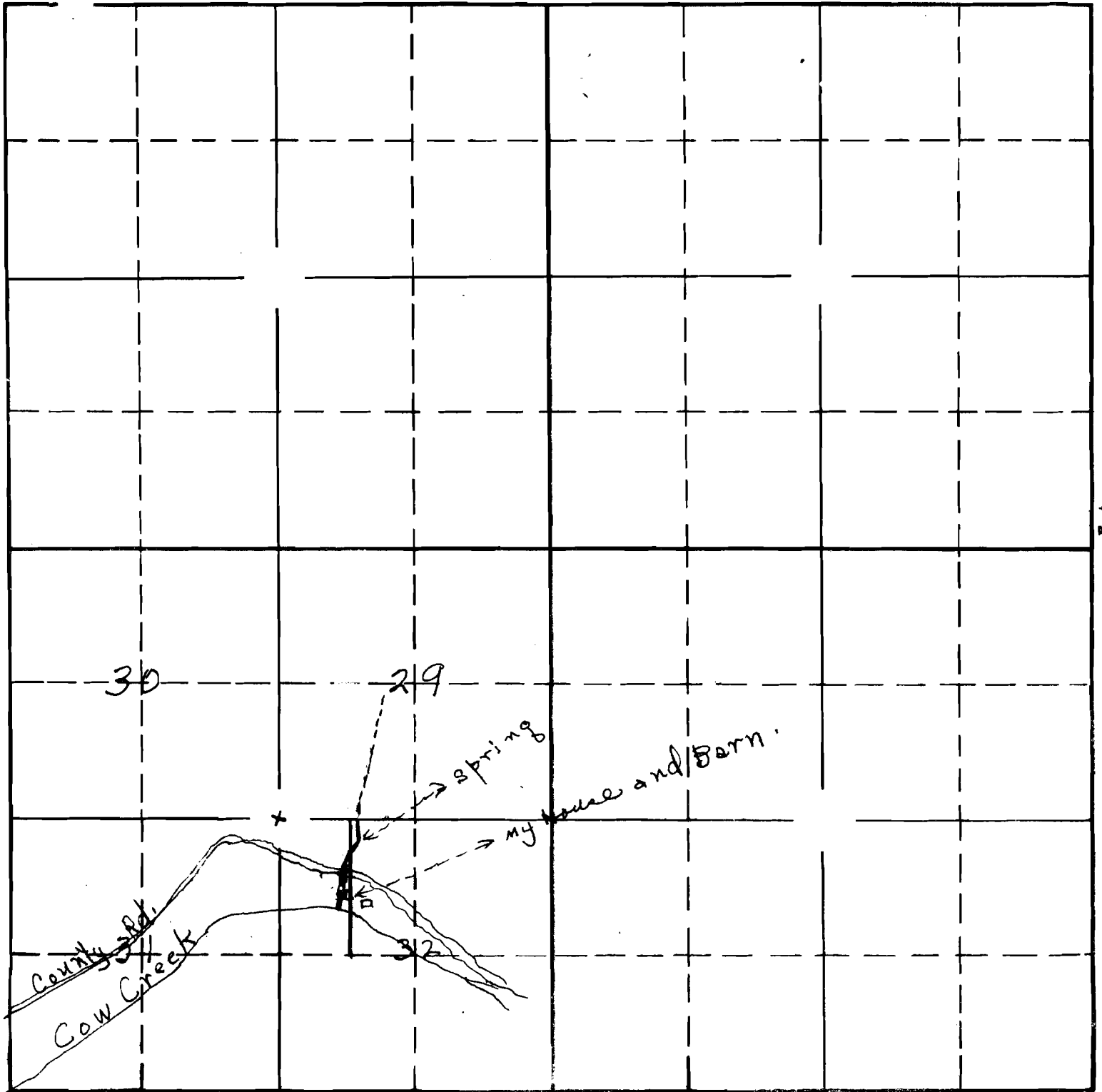
SECTION

TOWNSHIP 32S, RANGE 6W, W. M.

North

West

East



South

RECEIVED

JAN 21 1945

STATE ENGINEER  
ALEX. GAYL

RECEIVED

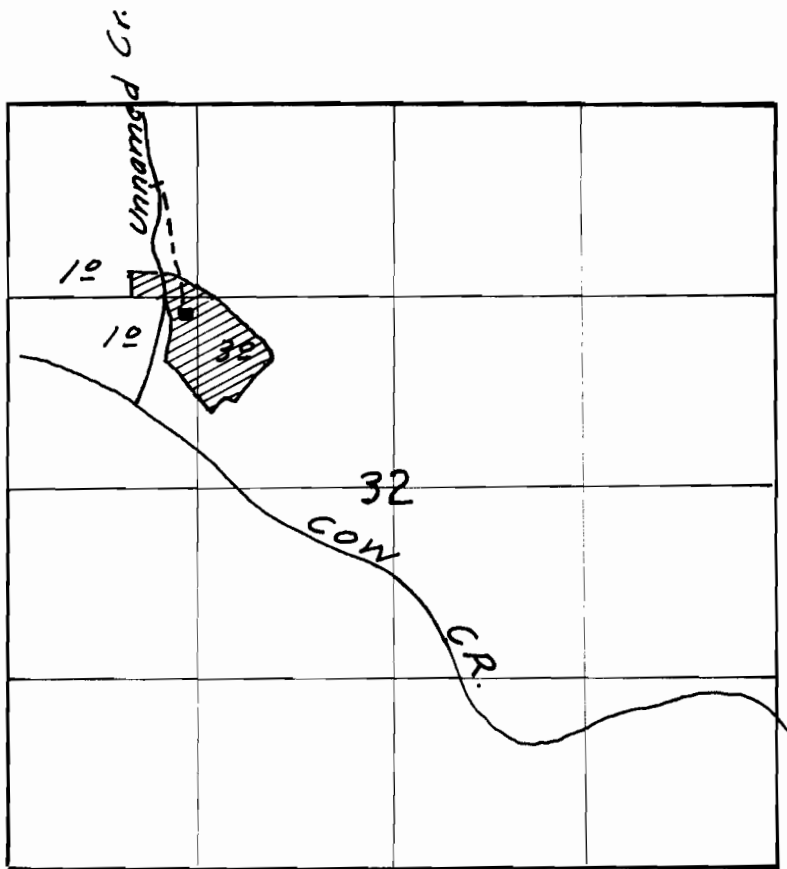
FEB 2 1945

STATE ENGINEER  
SALEM, OREGON

20654  
16-12

APPLICATION No. 20654

PERMIT No. 16153



T. 32 S., R. 6 W

Sketched from proof map.

App. 20654

Per 16155