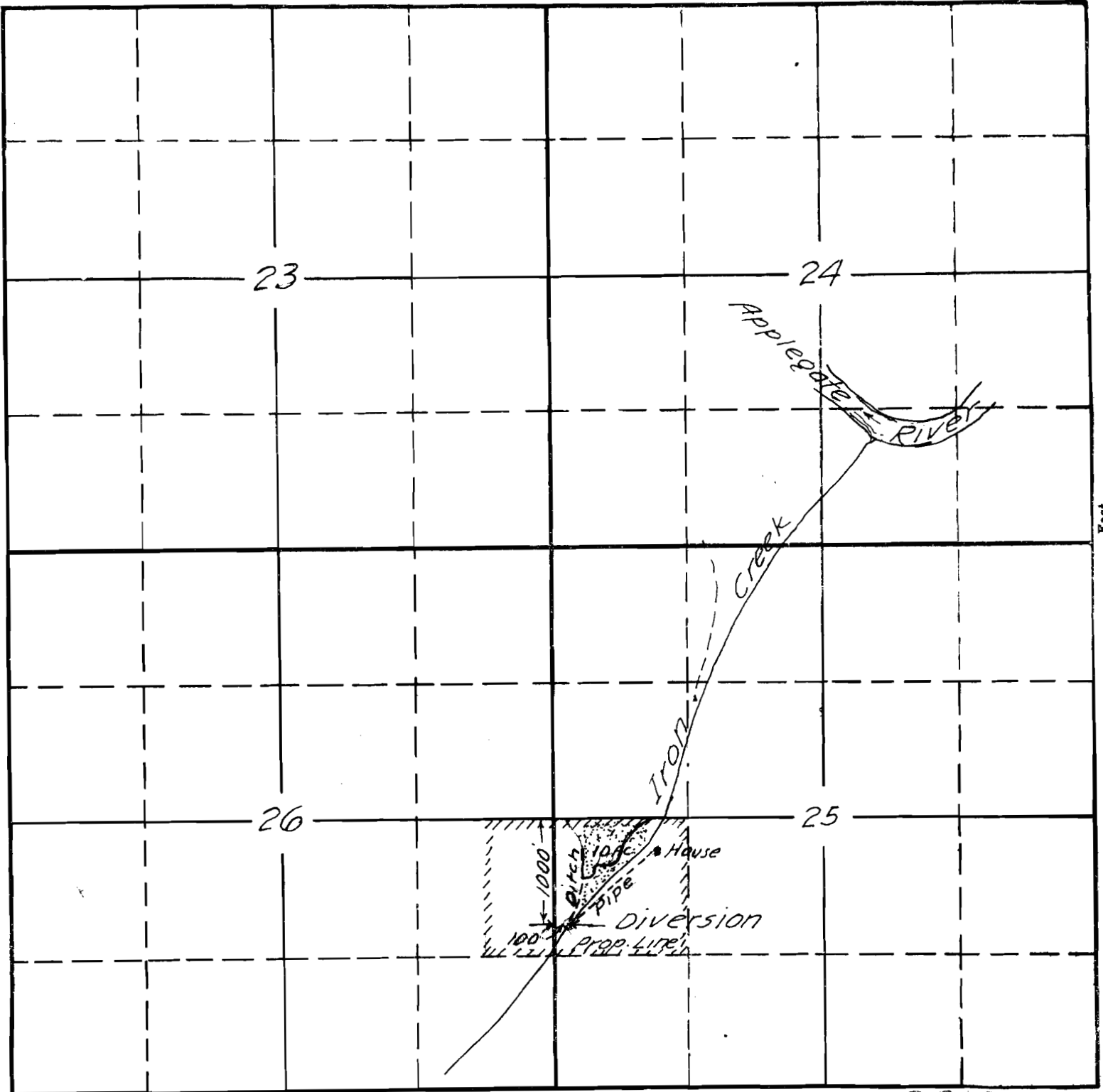


SECTION

TOWNSHIP 37 S, RANGE 6 W, W. M.

North



South

20659  
11 108

**RECEIVED**  
 JAN 29 1945  
 STATE ENGINEER  
 SALEM, OREGON

Claude Caswell  
 Murphy, ORC. 1/27/45

APPLICATION No. 20659  
 PERMIT No. 16160