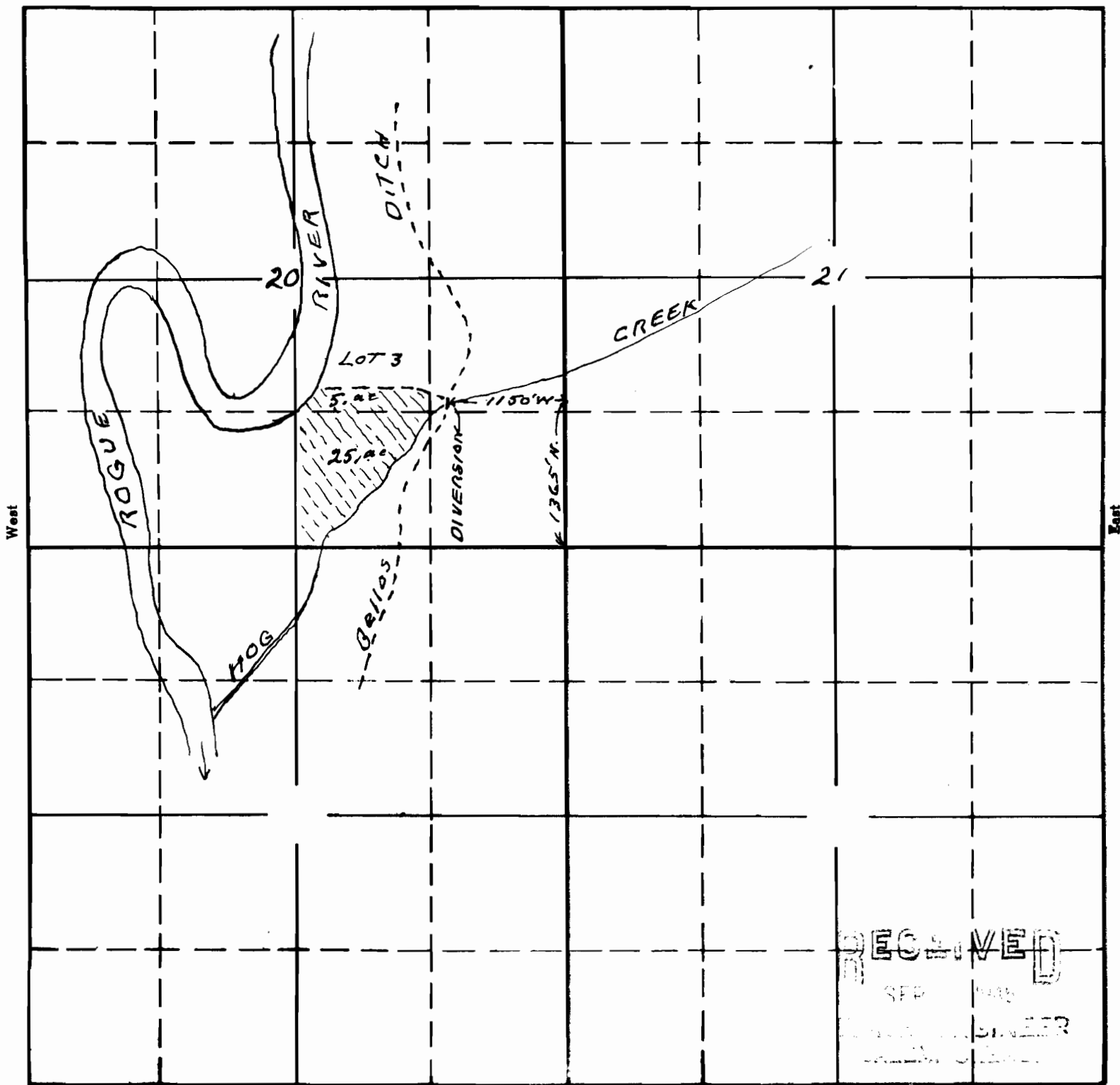


20

TOWNSHIP 35S, RANGE 1W, W. M.

North



RECEIVED  
 SEP 1906  
 CIVIL ENGINEER  
 WASH. STATE

South

Map To accompany application of  
 Ted Flury for use of waters of Hog Creek  
 for supplemental use for irrigation  
 purposes.

21155  
 15-780  
 APPLICATION No. 21155  
 PERMIT No. 16577