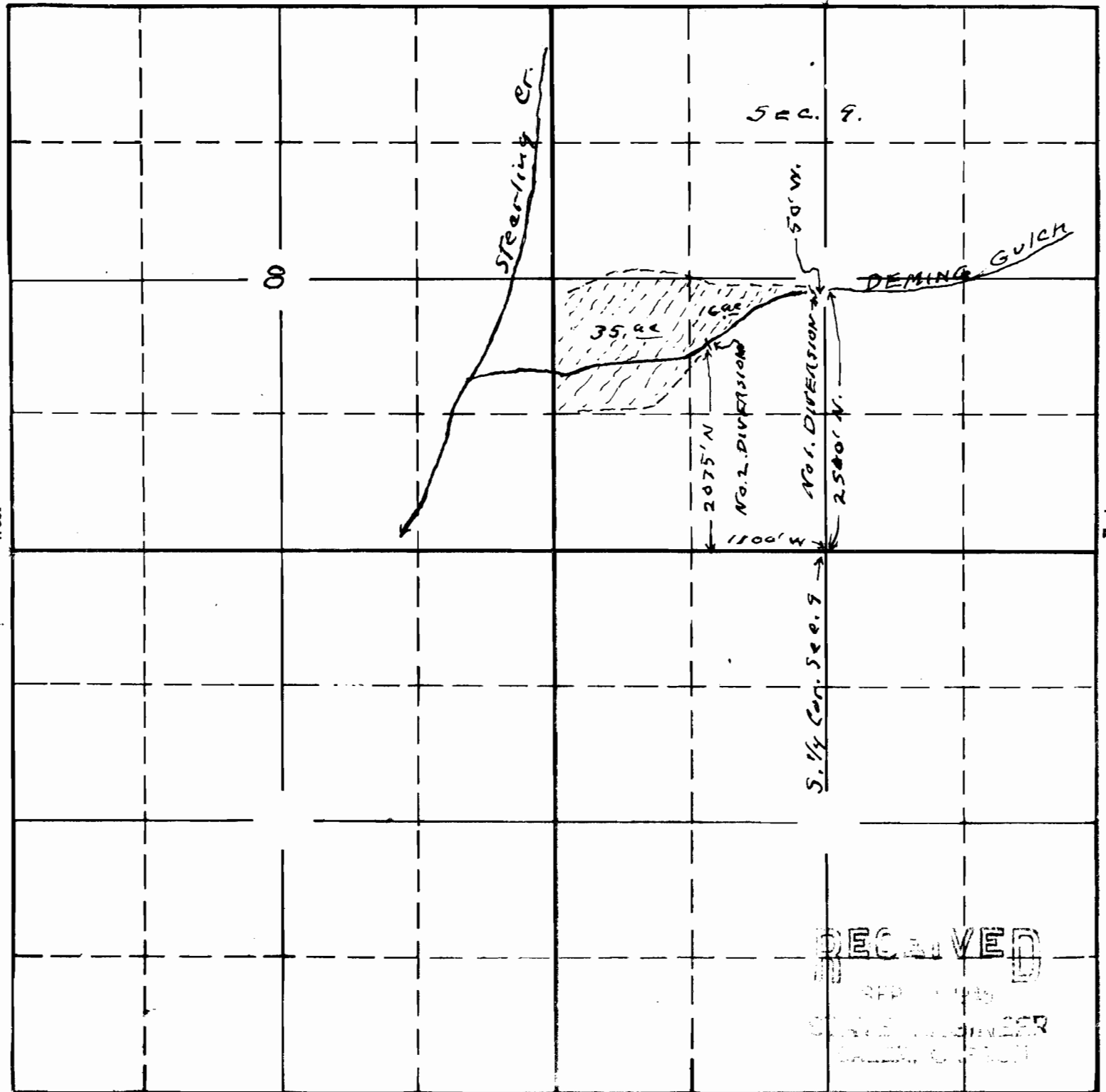


9

TOWNSHIP 39S, RANGE 2W, W. M.

North



South

RECEIVED  
 SEP 15 1915  
 CIVIL ENGINEER  
 BUREAU OF RECLAMATION

21161  
15-163

APPLICATION No. 21161  
PERMIT No. 16582

Map to accompany application of  
A. L. Kitchen for use of waters of  
Deming gulch for irrigation purposes.

This office 9/8/15 *A.S.*