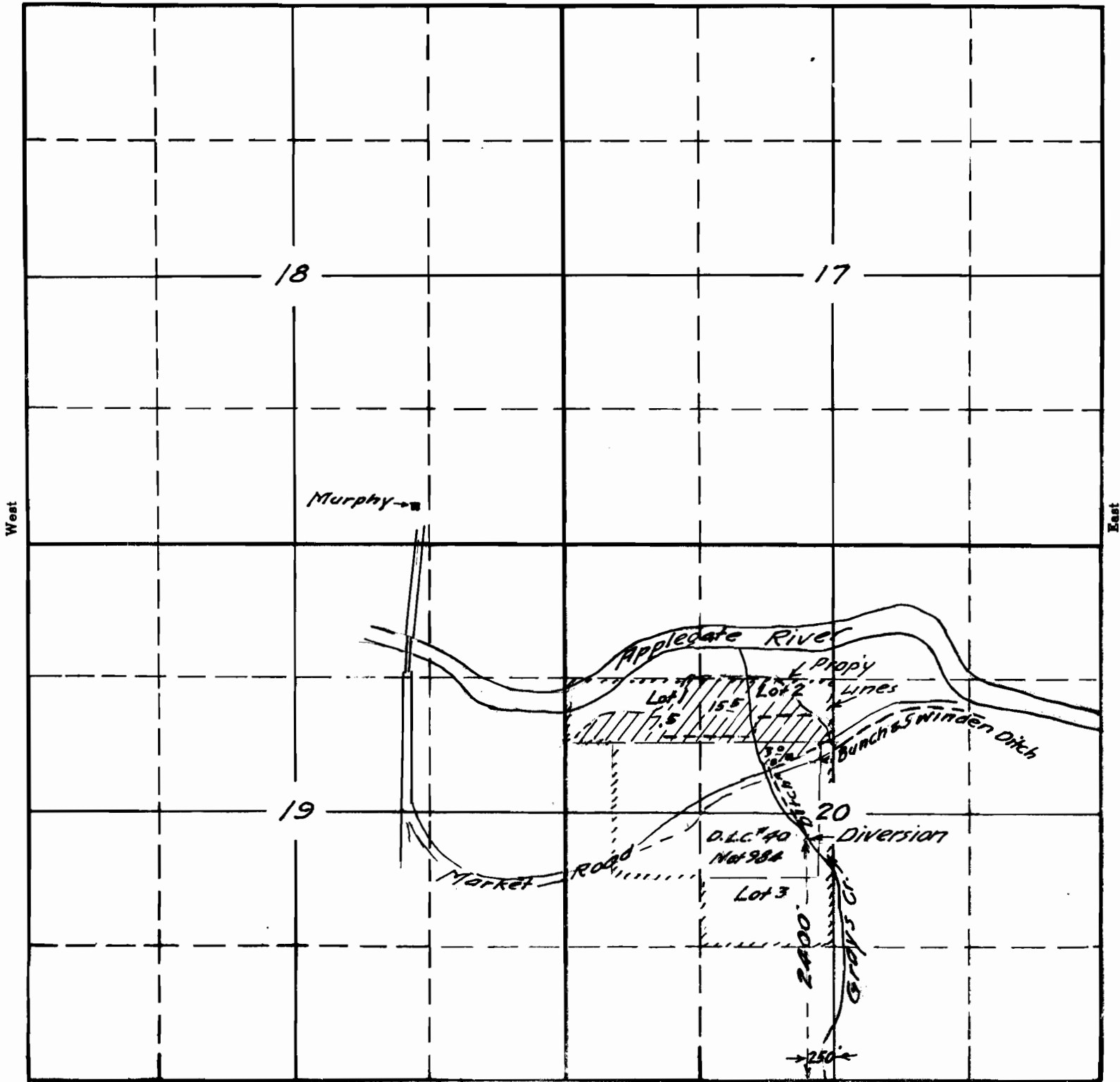


SECTION

TOWNSHIP 37 S., RANGE 5 W., W. M.

North



South

21589

15-160

Rudolph R. Bischoff and Elizabeth Bischoff
Apr. 1946

APPLICATION No. 21589

PERMIT No. 16965

RECEIVED

APR 19 1946

ENGINEER
SANTA FE COUNTY