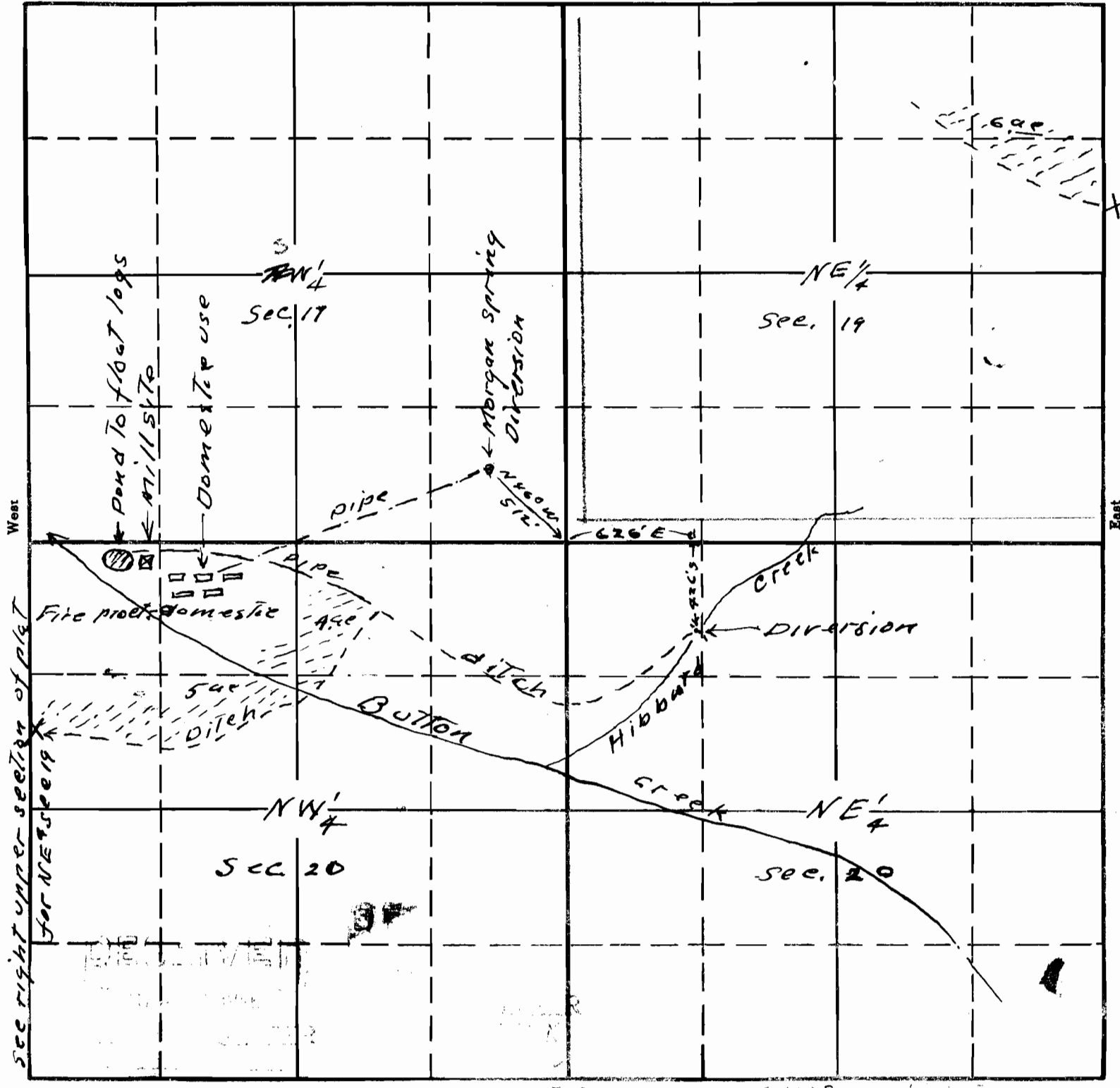


19
20

TOWNSHIP 32 S, RANGE 2 E, W. M.

North



See right upper section of plat for NE 1/4 Sec 19

South

21938

15 15 E

Map to accompany application of Harvey F Morgan for use of waters from Morgan spring & Hibbard Creek for logging pond, fire protection, domestic & camp ground, steam boiler & irrigation

APPLICATION No. 21938
PERMIT No. 17266

This office 5/30/16