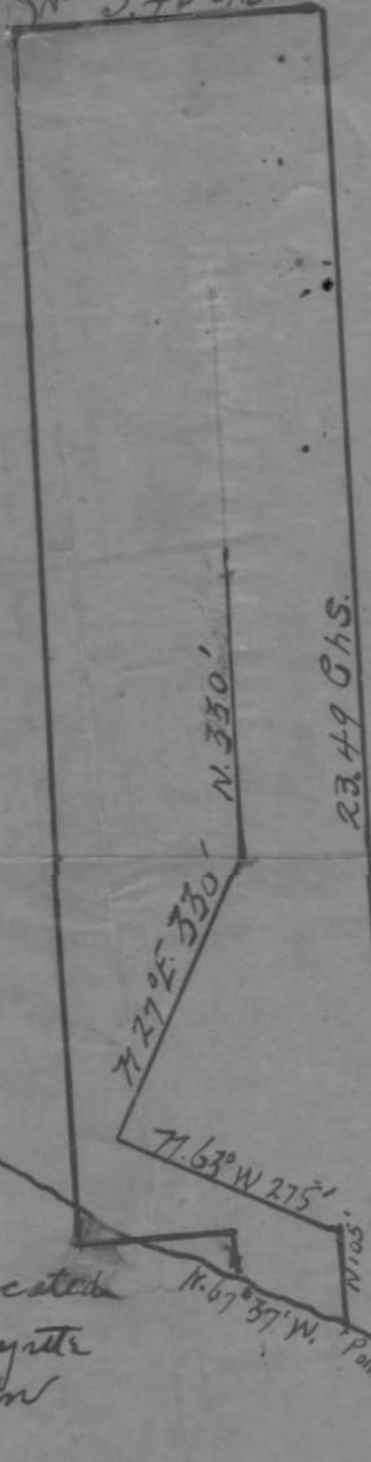


Initial point of farm is
 43.11 Chanc East of N.W. corner
 of J. J. Cornelison D.L.C. #46
 in Tp. 29 S. R. 5. West. W. M.
 Douglas County.

Initial Point
 5.45 Chs.

ation No. 3177
 mit No. 1753

OFFICE OF STATE ENGINEER
 RECEIVED
 OCT 2 1913
 SALEM, - OREGON,



Map showing farm of Arma J. Cornish
 Myrtle Creek line and plan of
 proposed irrigation system.
 "Edgewater irrigation system"

South Myrtle Creek
 Point of diversion is located
 on North bank of South Myrtle
 Creek - N. 63° W. 80 ft from
 S.W. corner of farm.

APPT. SE Cor Sec. 27
 S.W. Corner of Farm
 Point of diversion