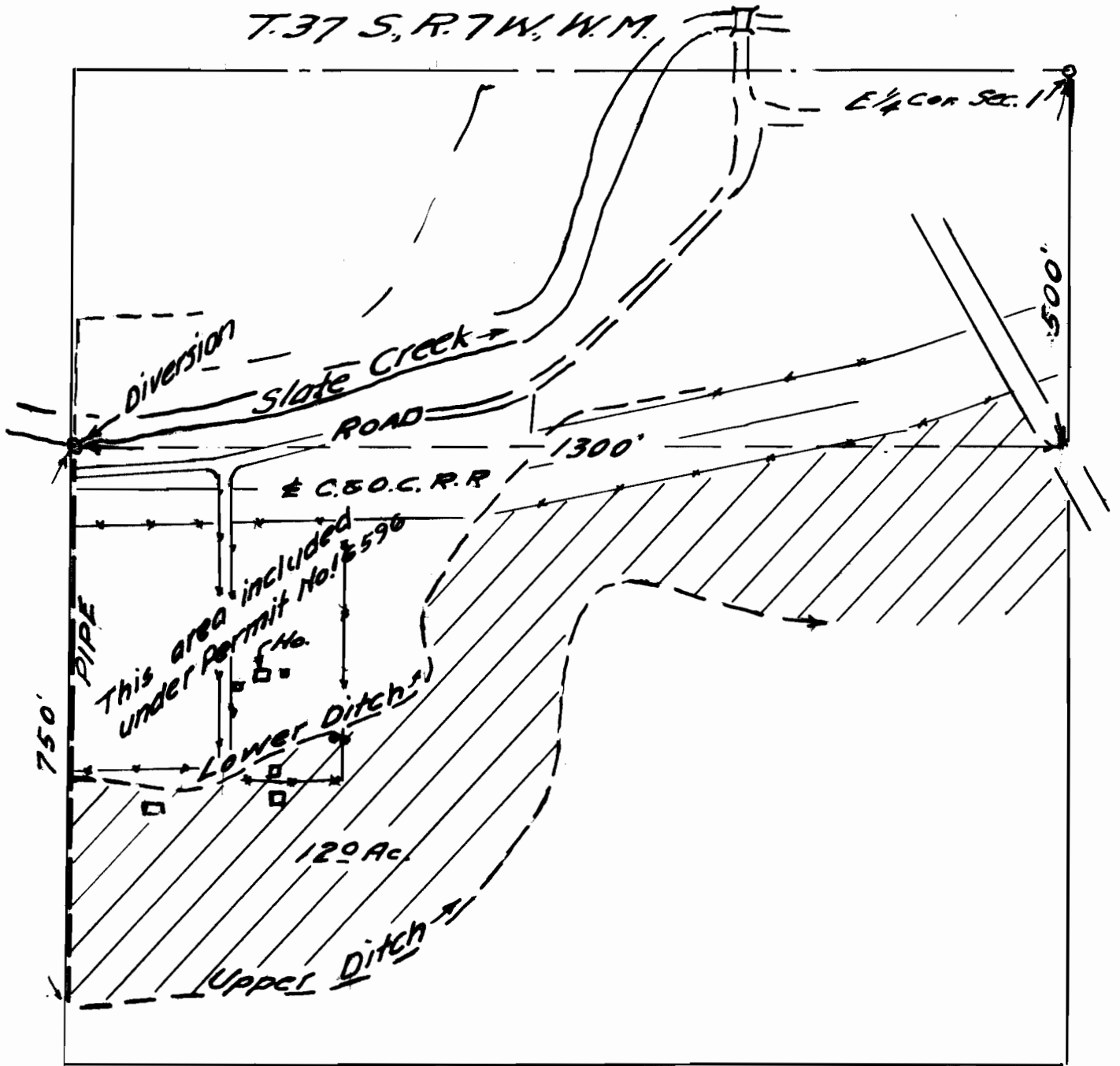


T.37 S., R.7 W., W.M.

E 1/4 Cor Sec. 1



22776 15-162

NE 1/4 SE 1/4 Sec. 1
Scale 200' = 1"

Frank C. Sullivan

Application No 22776

Permit No 17873

RECEIVED
 APR 1 1962
 STATE ENGINEER
 STATE OF ILLINOIS