

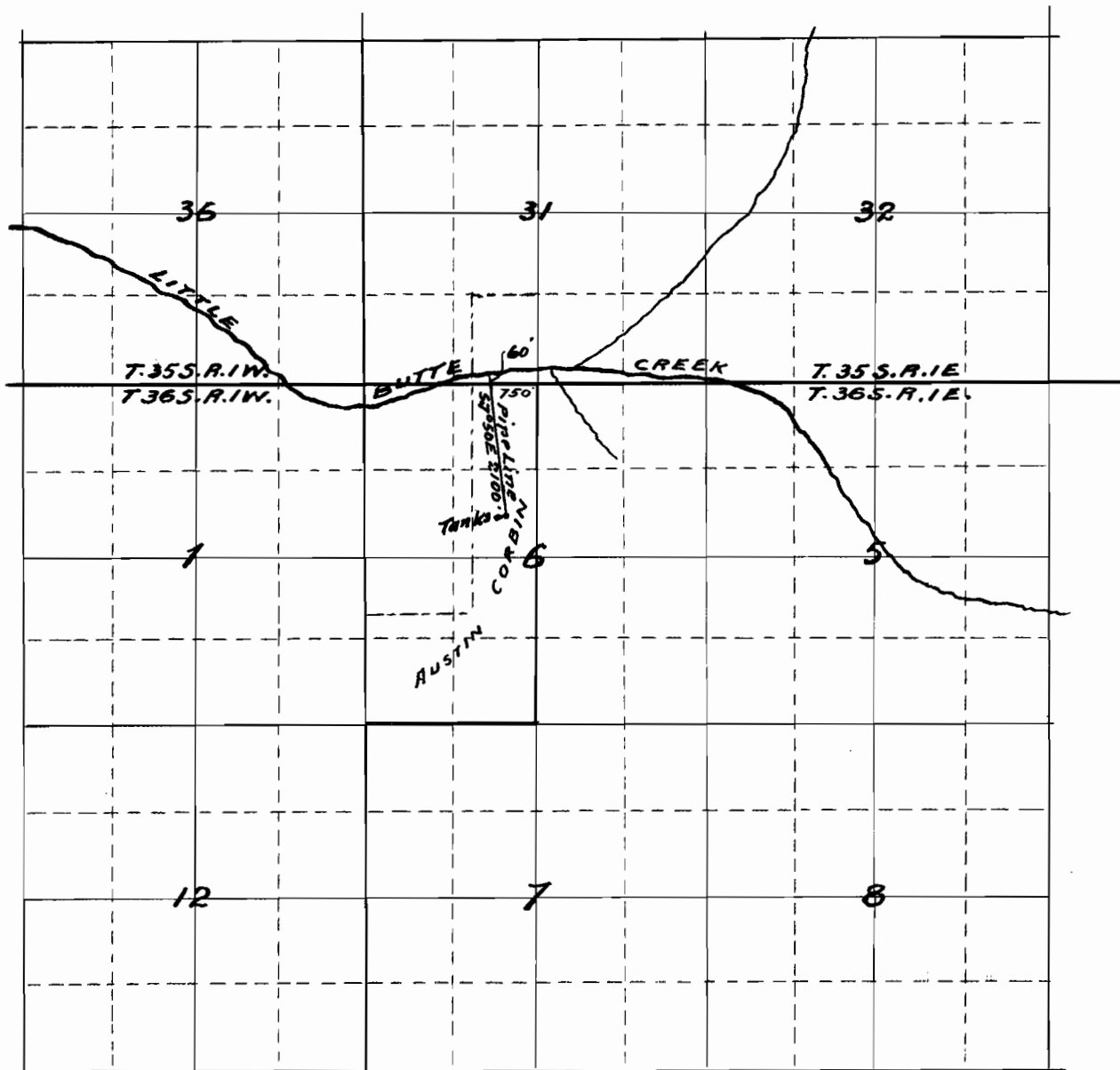
RECEIVED  
OCT 31 1913  
SALEM, - OREGON,

Map accompanying application of  
AUSTIN CORBIN to appropriate water  
from Little Butte Creek.

Surveyed Oct. 28<sup>th</sup> 1913

— Scale: 2 in = 1 mile. —

327/  
1913



I, Alfred S. Tee, of Medford, Oregon, do hereby certify that this map was made from notes of actual survey made by me Oct. 28<sup>th</sup> 1913, and that it is a correct representation of the same.

Alfred S. Tee.  
Surveyor.