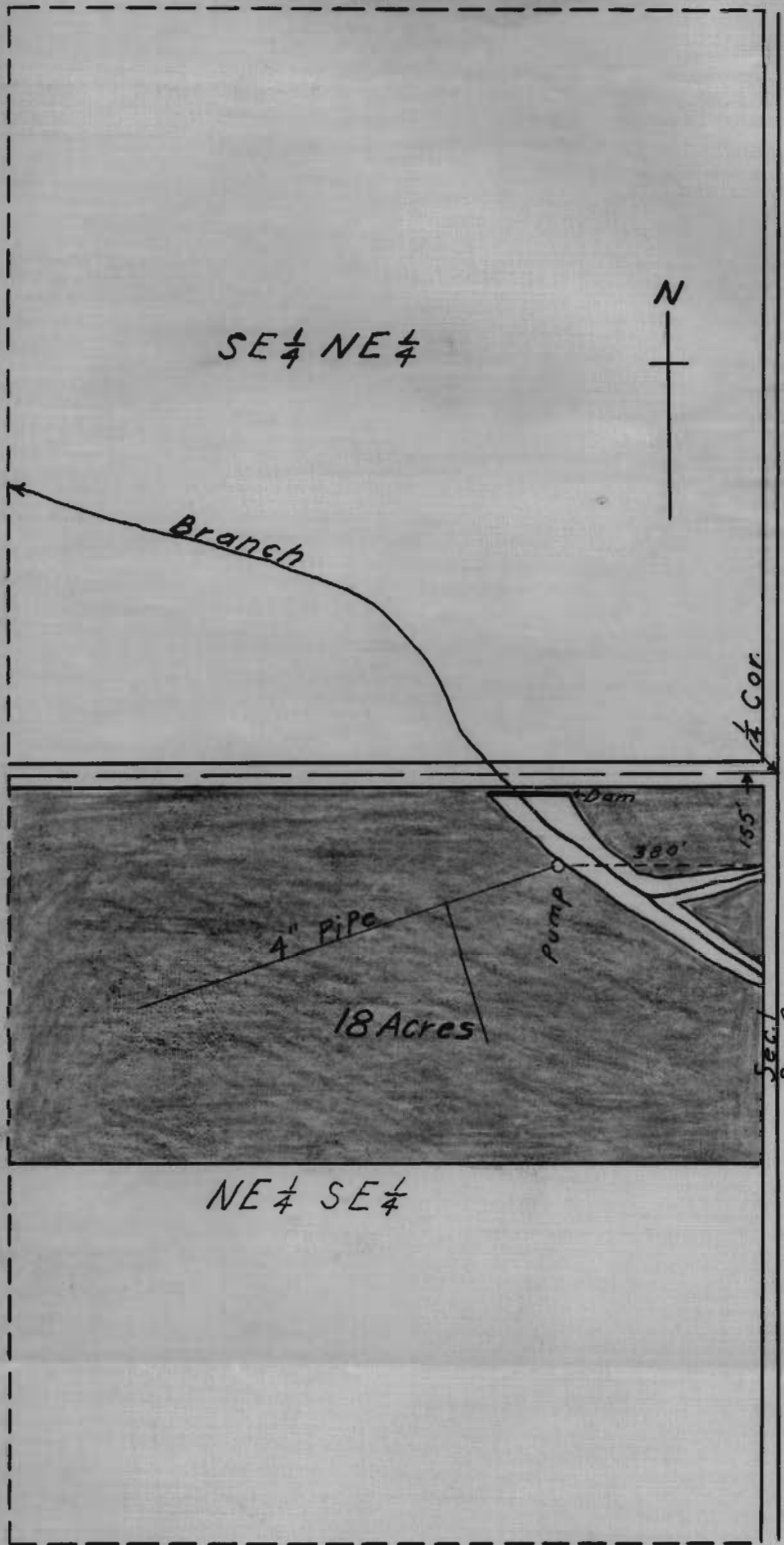


T29SR15W.W.M.



Map accompany application of F.C. Larreau to appropriate water

RECEIVED  
AUG 26 1947  
STATE ENGINEER  
SALEM, OREGON

Scale: 1 in. = 5 chs. = 330 ft.

I, J.N. Gearhart, of Myrtle Point, Oregon, do hereby certify that this map was made from notes taken during an actual survey made by me on June 20, 1946, and that it correctly represents the works described in the accompany application together with the location of streams in the immediate vicinity.

Application No. 22803  
Permit No. 17950

J. N. Gearhart  
Oregon No. 185

22803

17-4B