

School

N.W. Cor. of S.W. 1/4 of S.E. 1/4 Sec. 10

N.E. Cor. of S.W. 1/4 of S.E. 1/4 Sec. 10  
TWP. 35 S. R. 4 W. W. M.

N.E. Cor. of S.E. 1/4 of S.E. 1/4 of Sec. 10  
Twp. 35 S. Range 4 West, W. M.

1330.5 Co. Road

1330.5

694.5

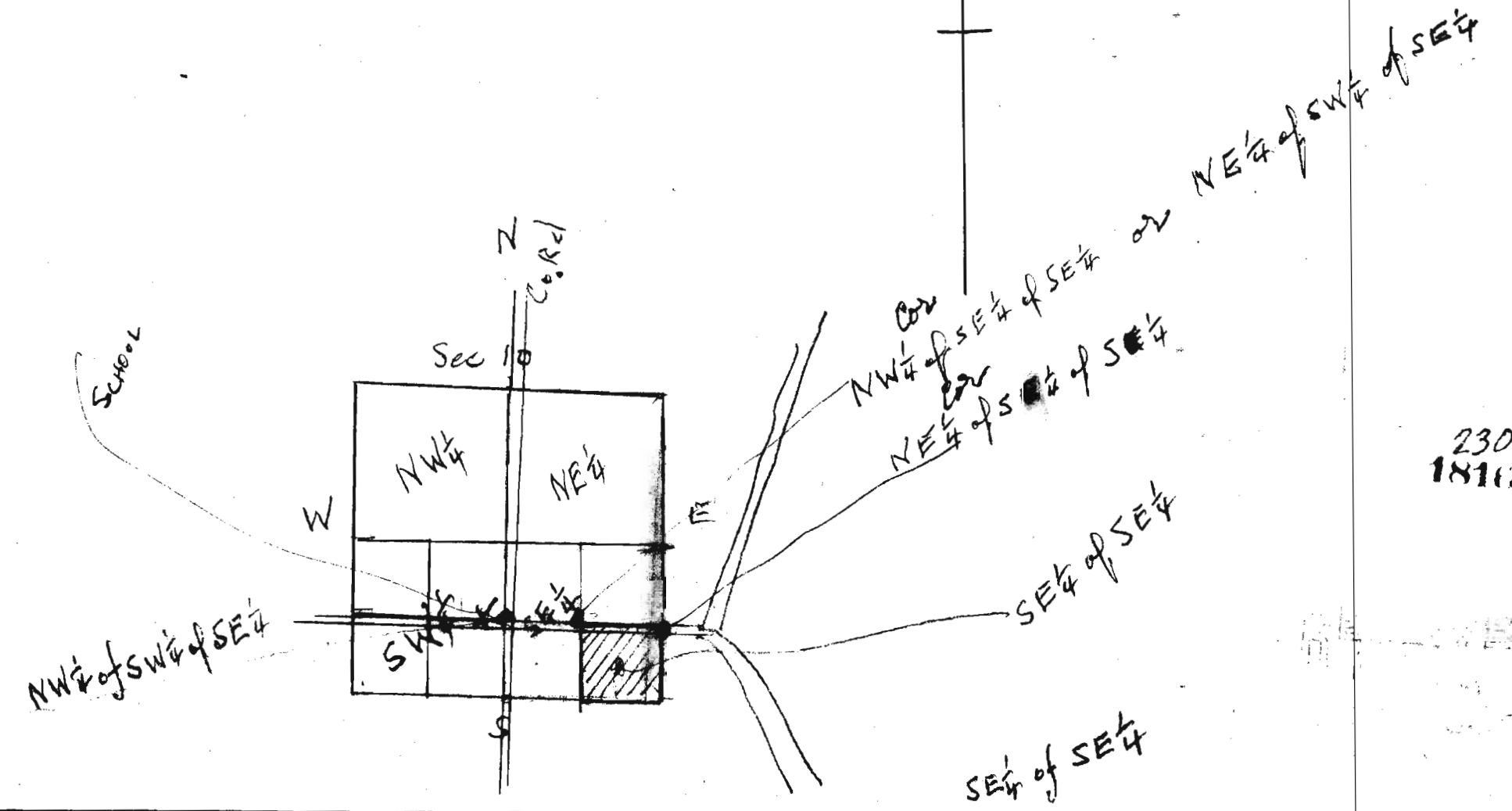
104.35 114.23 208.71 208.71 160.0 244.0 290.5

444.0 431.0 622.54 1.65 AC  
Roslington  
Harry Hudson  
2.55 AC  
JOHNSTON  
Roslington  
Dart  
Murry  
1.69 AC  
K. Darnog  
265.0  
250.0  
208.0  
244.0  
20.0  
20.0

160.7

141.5  
147.5  
138.1  
EVANS GREEN  
274.8  
15.4

S.E. 1/4 of S.E. 1/4 SEC. 10  
TWP. 35 S. R. 4 W. W. M.  
Scale 1"=100'



23072  
18163

23072 15-37