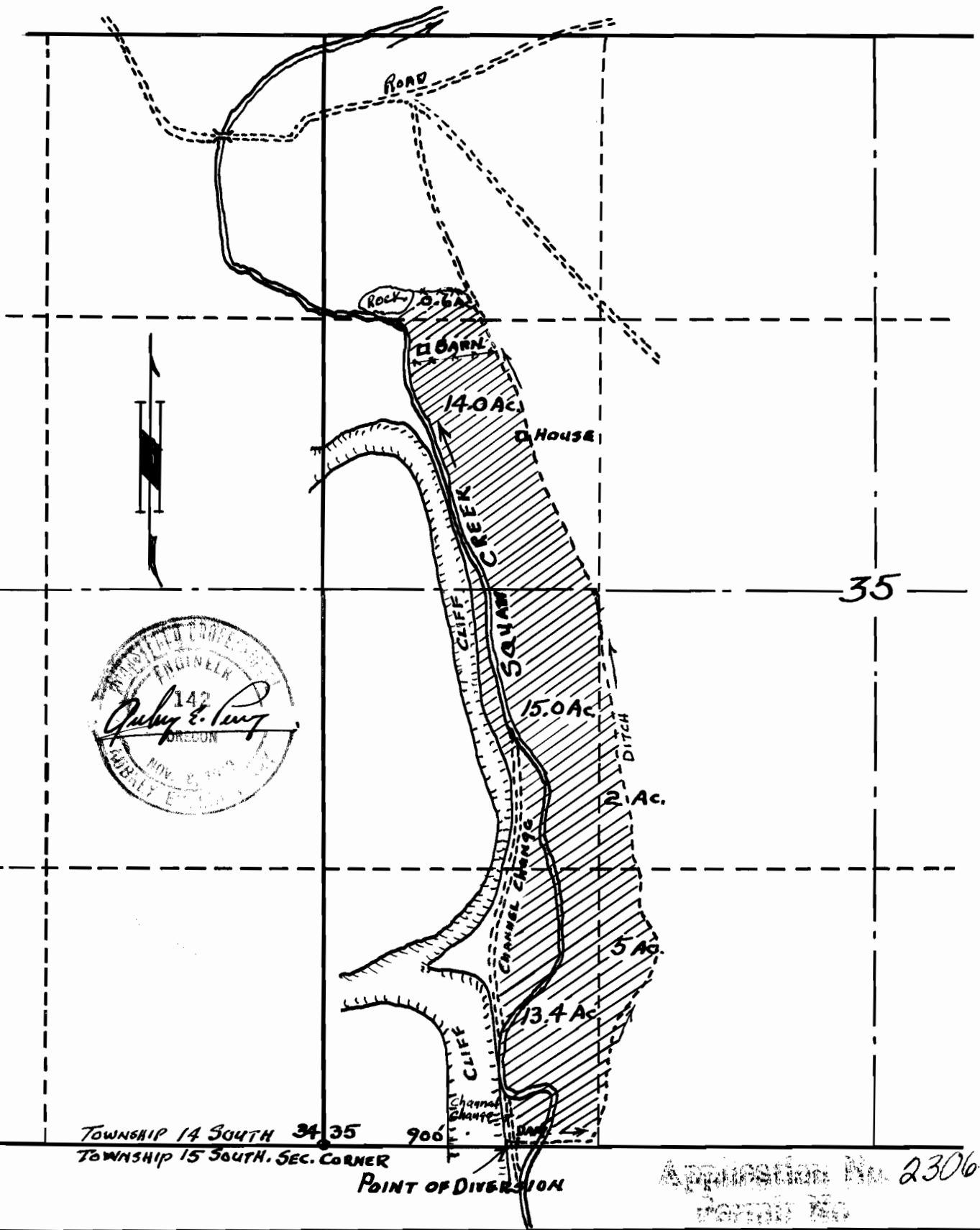


MAP TO ACCOMPANY APPLICATION OF C.W. BOGART
 SISTERS - OREGON
 SECTION 35 TOWNSHIP 14 SOUTH RANGE 10 EAST.
 SCALE 8" = 1 MILE



TOWNSHIP 14 SOUTH 34 35 900
 TOWNSHIP 15 SOUTH. SEC. CORNER
 POINT OF DIVERSION

Application No. 23064
 FORM 100