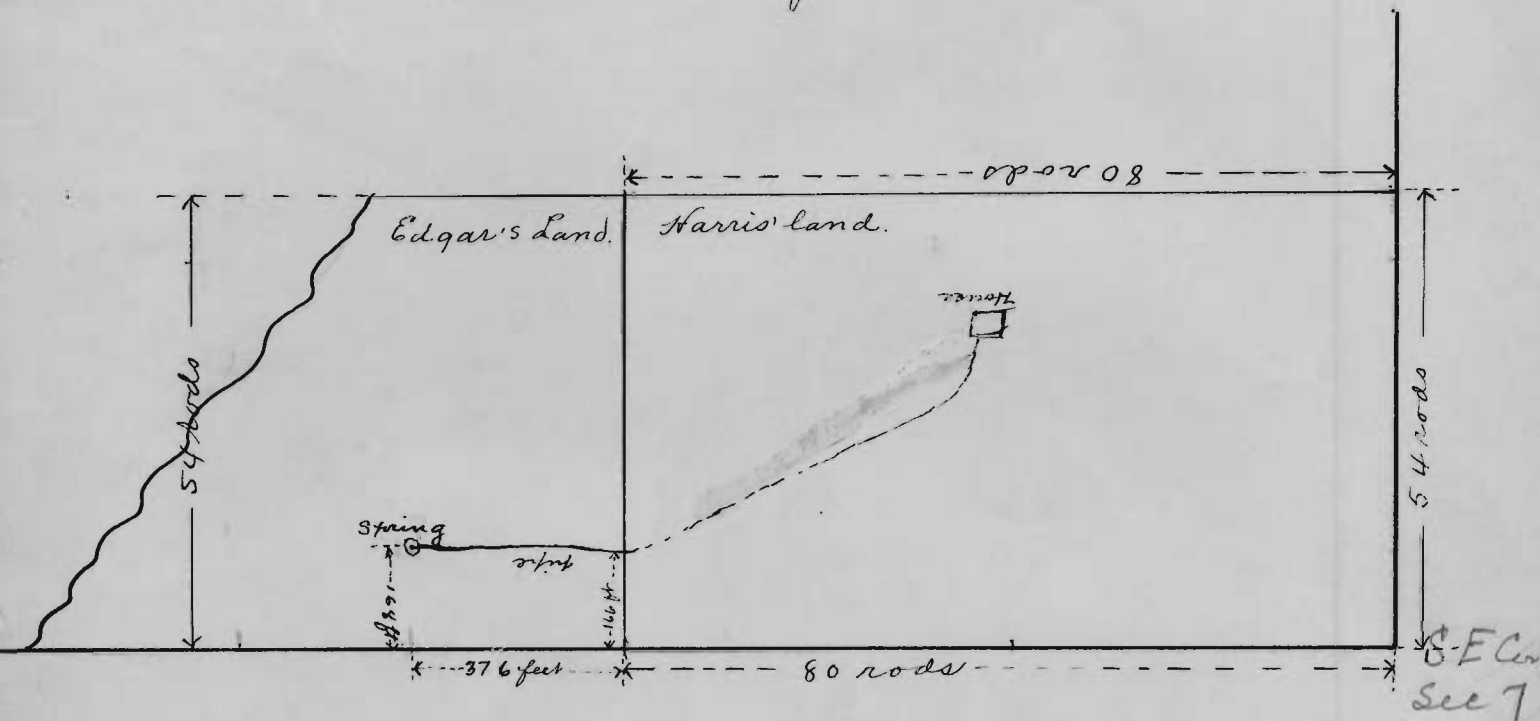


Southeast Corner of Section 7, Township 7
 Range 3 South, Willamette meridian,
 Polk County, Oregon



Scale, 20 rods to the inch.

OFFICE OF STATE ENGINEER
 RECEIVED
 DEC 15 1913
 SALEM, - OREGON,

Application No.
 Permit No.

3347

Township 7 S ,

Range 3 W .

6

5

4

3

2

1

Application No. 3347
Permit No.

7

8

9

10

11

12

Spring
G House
o Pipeline