

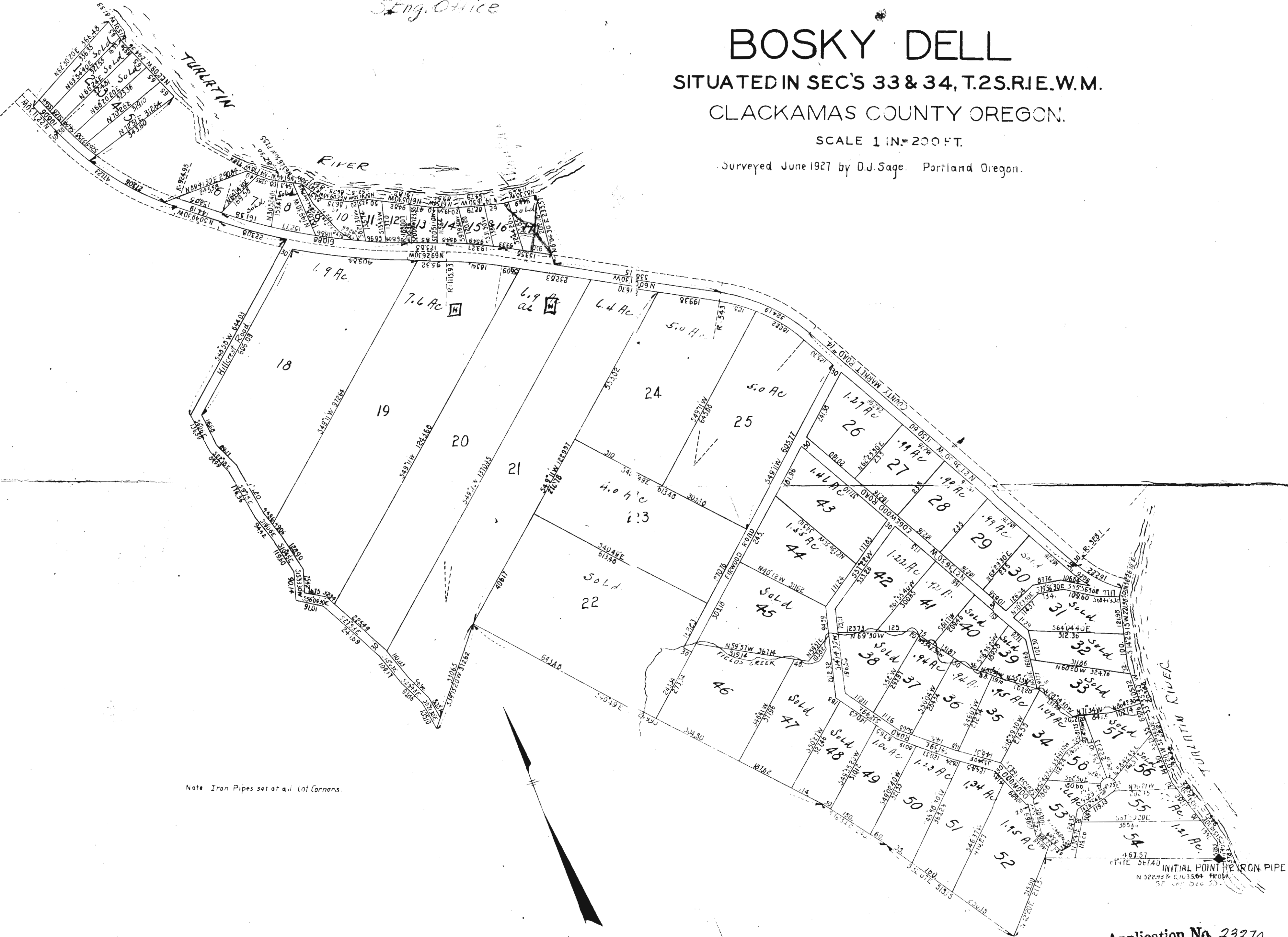
Don't send out of
S. Eng. Office

BOSKY DELL

SITUATED IN SEC'S 33 & 34, T.2S.R.1E.W.M.
CLACKAMAS COUNTY OREGON.

SCALE 1 IN = 200 FT.

Surveyed June 1927 by D.J. Sage. Portland Oregon.



Note Iron Pipes set at all Lot Corners.

Application No. 23270
Permit No. 18364