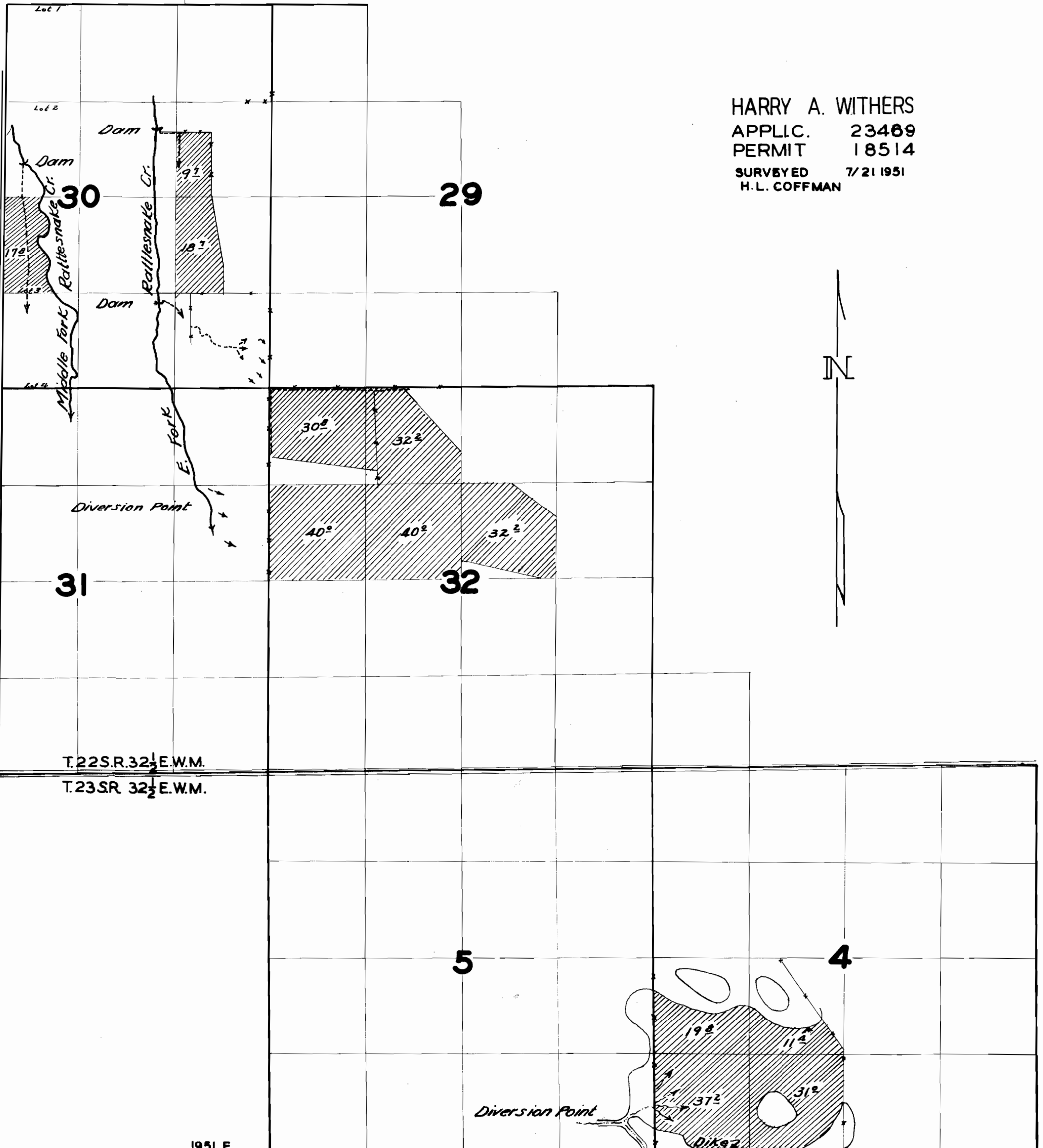
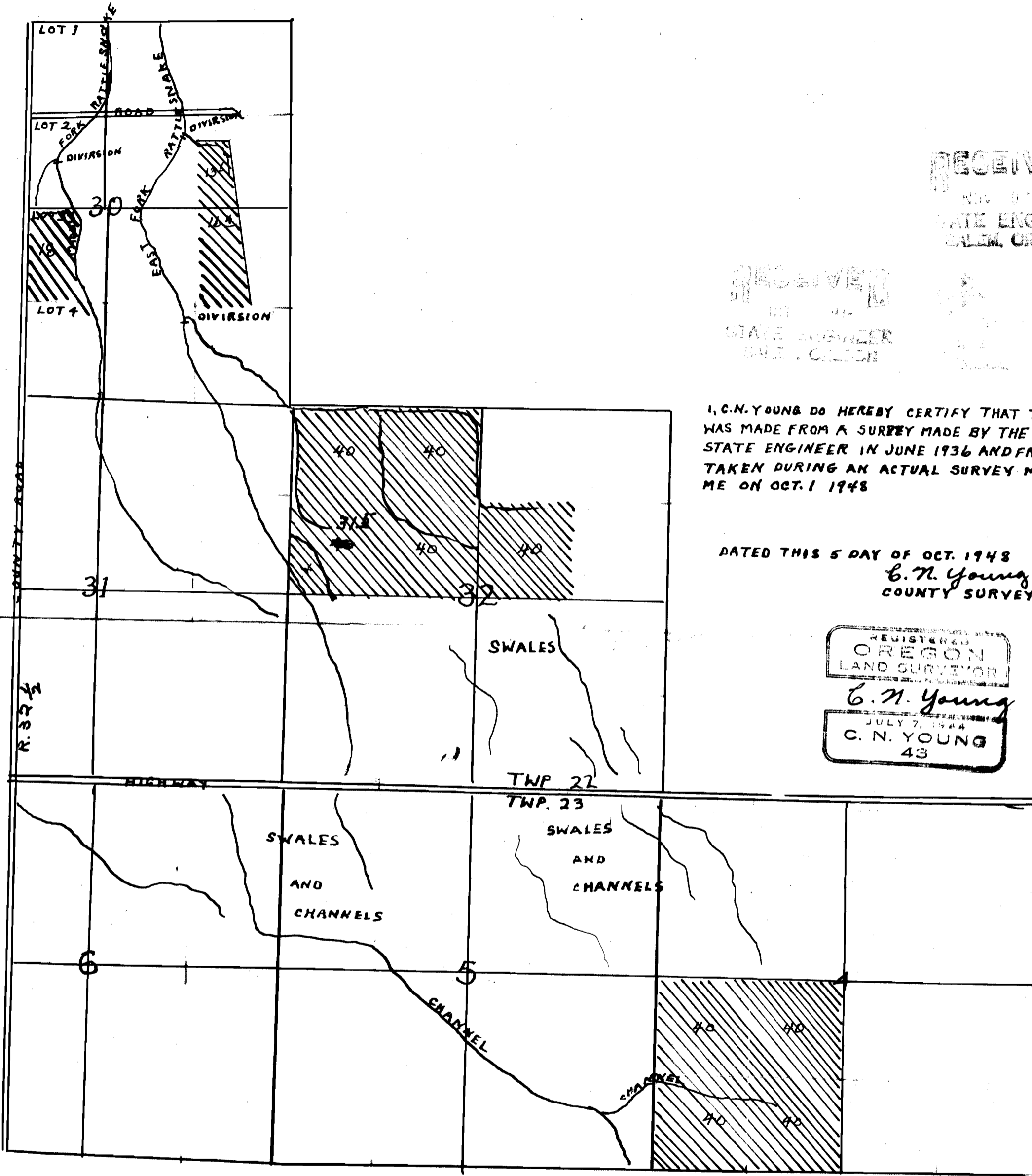


HARRY A. WITHERS  
APPLIC. 23469  
PERMIT 18514  
SURVEYED 7/21 1951  
H.L. COFFMAN



T.22S.R.32 1/2 E.W.M.  
T.23SR 32 1/2 E.W.M.



RECEIVED  
 STATE ENGINEER  
 SALEM, OREGON

RECEIVED  
 STATE ENGINEER  
 SALEM, OREGON

I, C. N. YOUNG DO HEREBY CERTIFY THAT THIS MAP  
 WAS MADE FROM A SURVEY MADE BY THE OFFICE OF  
 STATE ENGINEER IN JUNE 1936 AND FROM NOTES  
 TAKEN DURING AN ACTUAL SURVEY MADE BY  
 ME ON OCT. 1 1948

DATED THIS 5 DAY OF OCT. 1948  
*C. N. Young*  
 COUNTY SURVEYOR

REGISTERED  
 OREGON  
 LAND SURVEYOR  
*C. N. Young*  
 JULY 7, 1944  
 C. N. YOUNG  
 43

Application No. 23469  
 Permit No. 18514