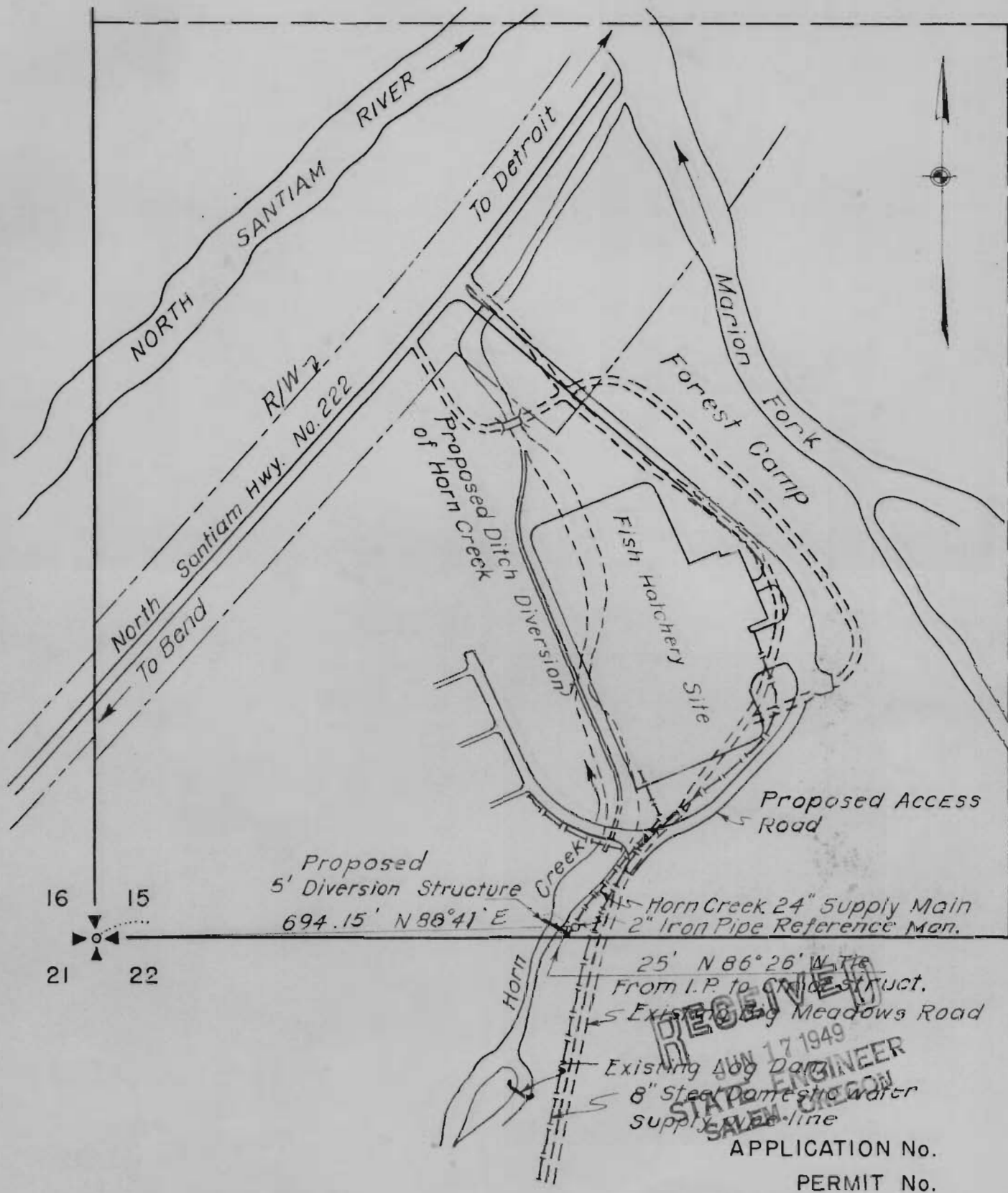


SW 1/4 - SW 1/4
SECTION 15

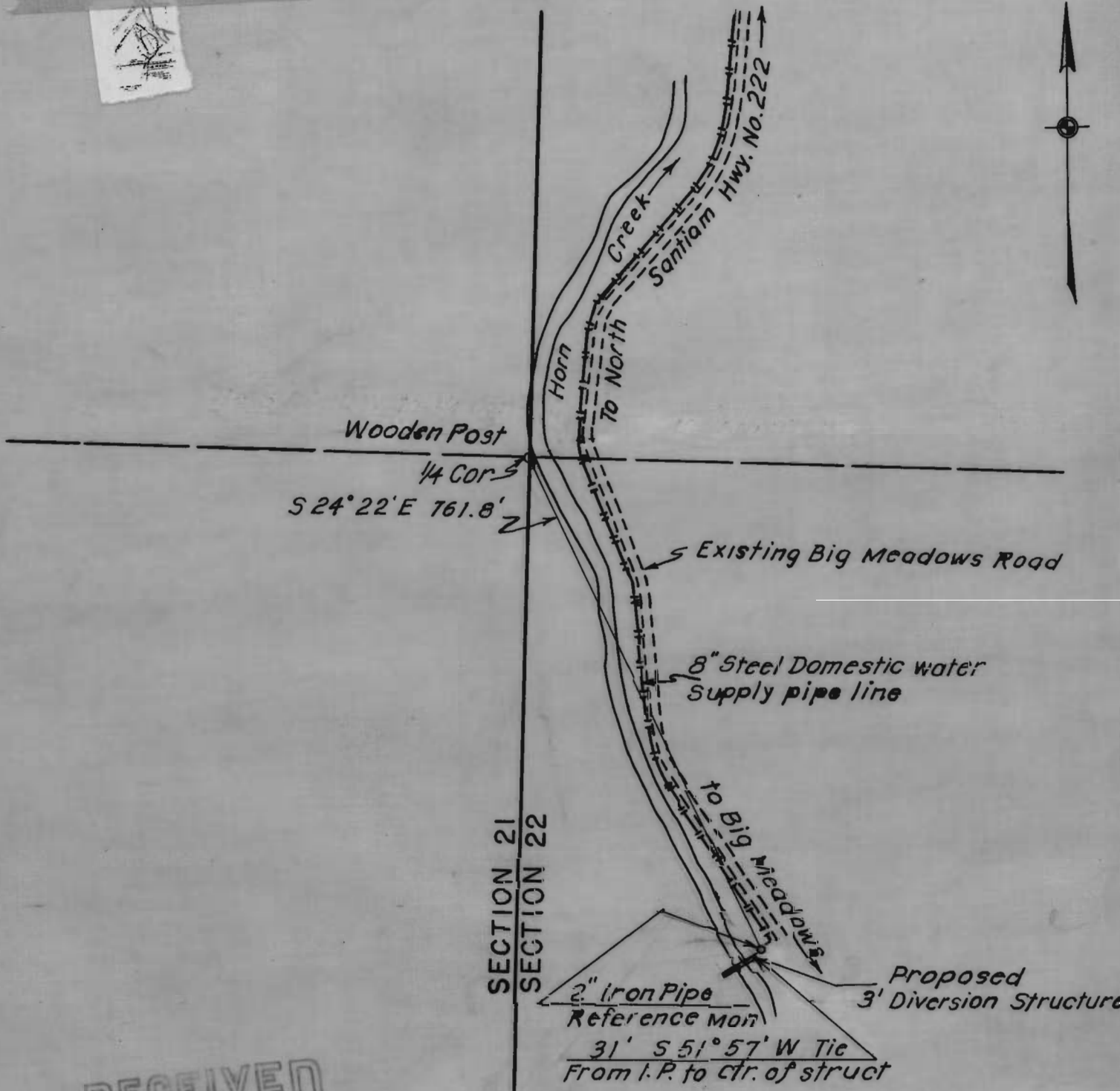
TOWNSHIP 11 S , RANGE 7 E , W.M.



HORN CREEK DIVERSION
SCALE 1" = 200'

NW 1/4 - SW 1/4
SECTION 22

TOWNSHIP 11 S , RANGE 7 E , W. M.



RECEIVED
JUN 17 1949
STATE ENGINEER
SALEM, OREGON

APPLICATION No. 23632
PERMIT No. 18689

HORN CREEK DOMESTIC WATER SUPPLY
SCALE 1" = 200'