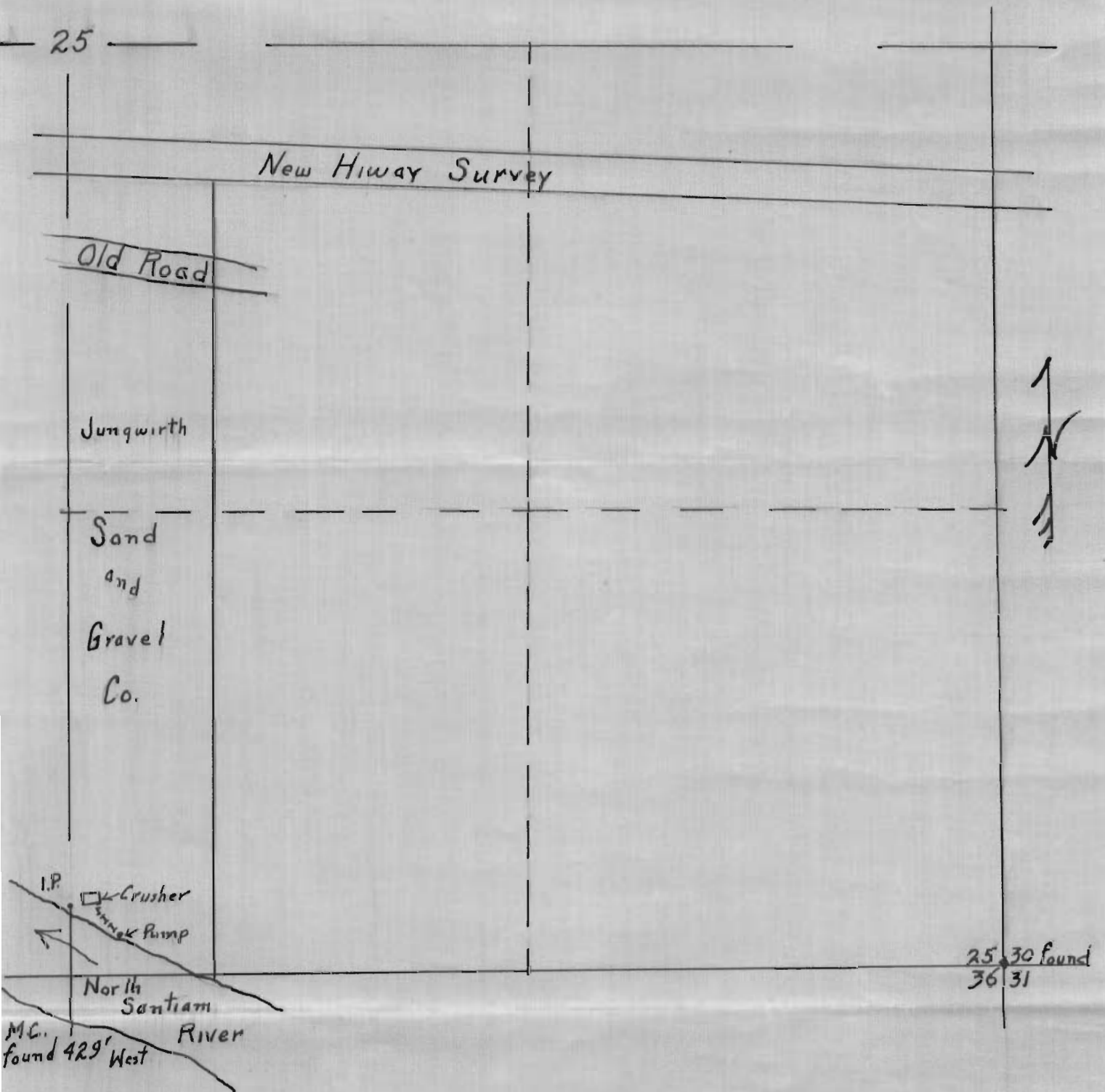


SE 1/4 of Section 25. T.9.S., R.2.E.W.M.

Scale 1" = 400'



I, L Burl Smith of Lyons Ore. do hereby certify that this map was made from notes taken during an actual survey made by me on April 9, 1949; that the monument shown on the map is a 1" iron pipe 36" long - 30 inches in the ground - 190 ft North of 1/4 corner between Sec's. 25 + 36 T.9.S., R.2.E.W.M.

*L. Burl Smith*

Application No. 23769

Permit No. 23769