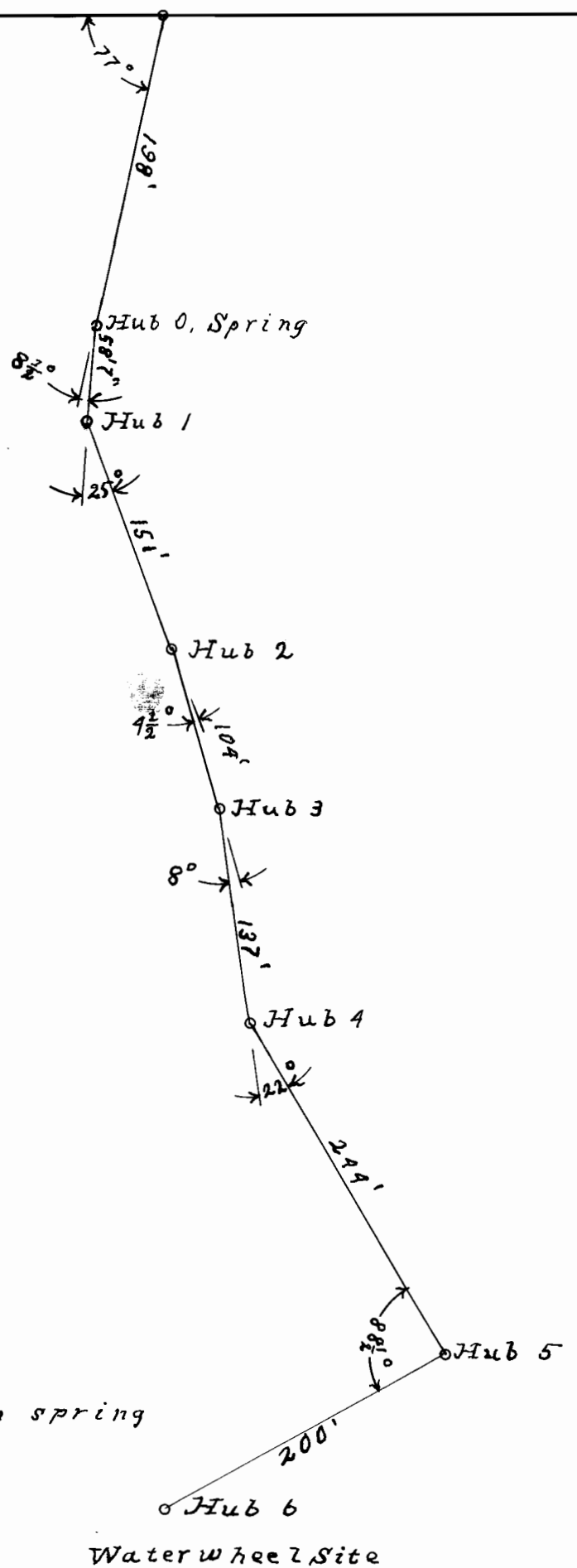


650'

SE 1/4 Sec 25.
T1N R4E W3M.



55 feet fall from spring to power site.

Note: I W. G. Hicks, of Corbett Oregon, do hereby certify that this Map was made from notes taken during an actual survey made by me on JANUARY 8, 9 & 10, 1914, and that it correctly represents the works described in the accompanying application.

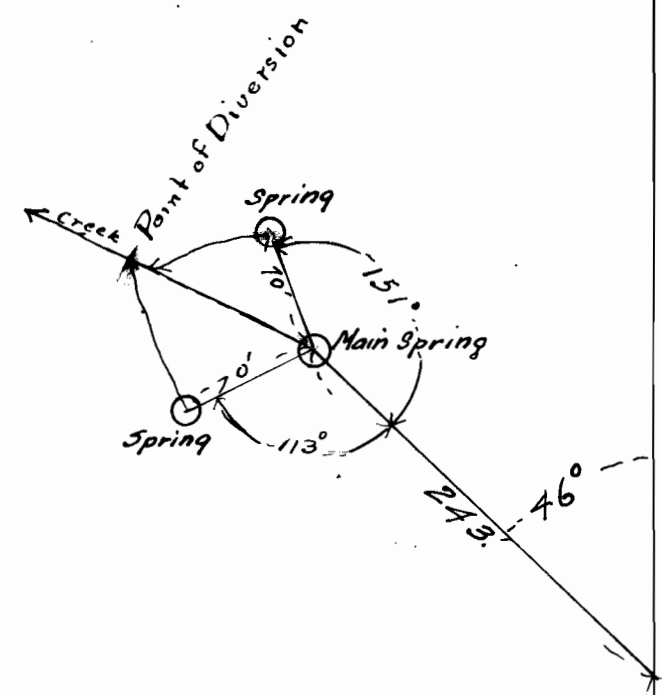
W. G. Hicks Surveyor.

S.E. 1/4 - S.E. 1/4 Sec. 25
T.1.N.R.4.E. W.M.



OFFICE OF STATE ENGINEER
RECEIVED
JUL 7 1916
SALEM, OREGON.

OFFICE OF STATE ENGINEER
RECEIVED
JUL 13 1916
SALEM, OREGON.



Amended Maps.

Application No 3412
Map No 1878

I H.L.Chandler of Portland Oregon, do hereby certify that this Map was made from notes taken during an actual survey made by me on July 4th 1916, and that it correctly represents the works described in the accompanying application.

H.L.Chandler Surveyor.
Scale 1" = 100 Feet.