

RECEIVED

STATE ENGINEER



C.O. NORTON FARM of 54.156 Ac.

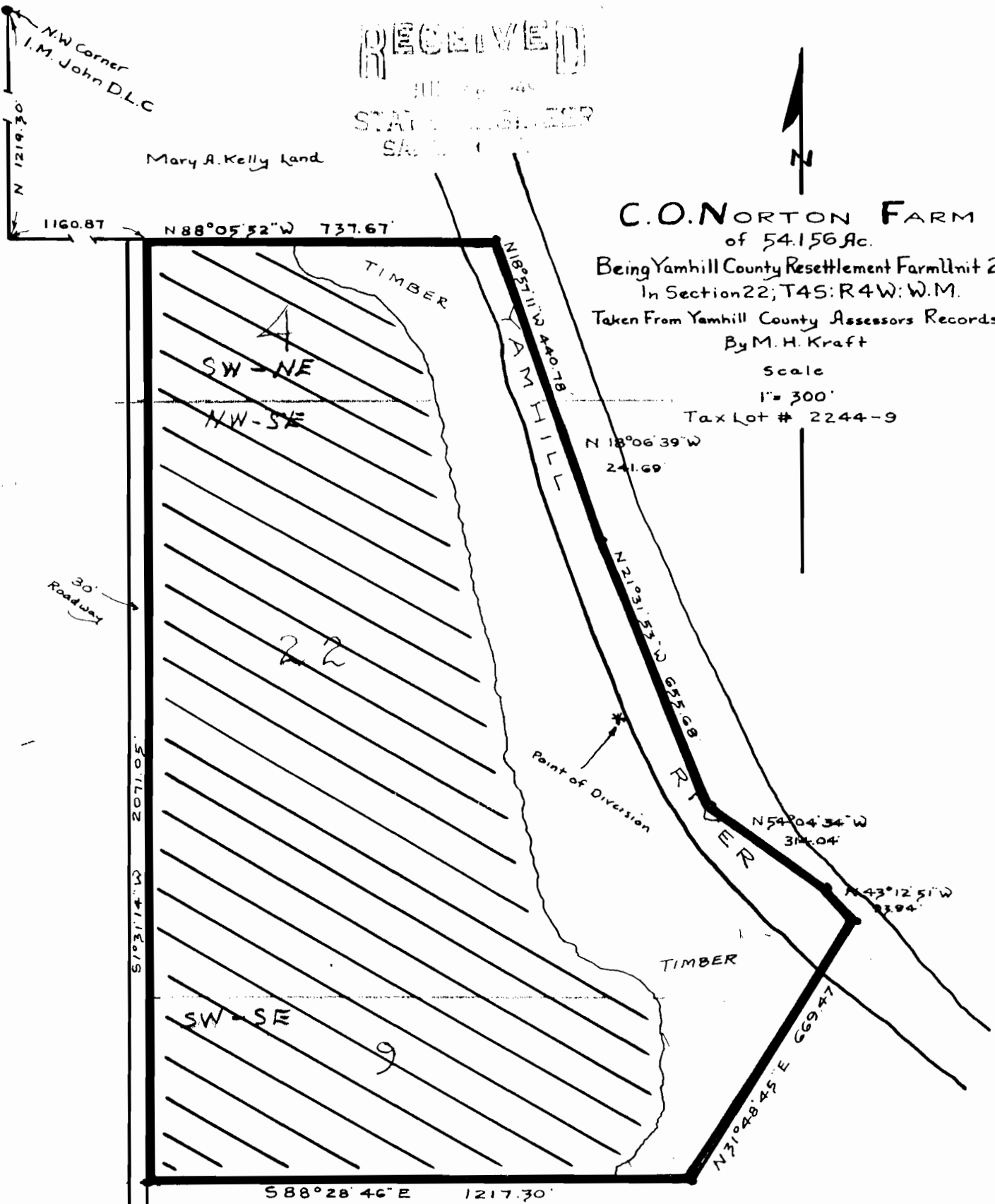
Being Yamhill County Resettlement Farm Unit 26
In Section 22; T4S; R4W; W.M.

Taken From Yamhill County Assessors Records
By M. H. Kraft

Scale

1" = 300'

Tax Lot # 2244-9



V. C. DeLashmott Land

NOTE

Point of Diversion is 2200' ± East and 2270' ± South of N.W. Cor. I.M. Johns D.L.C. *
Area To Be Irrigated Is Shown On The Map By Crosshatching

23851
18822