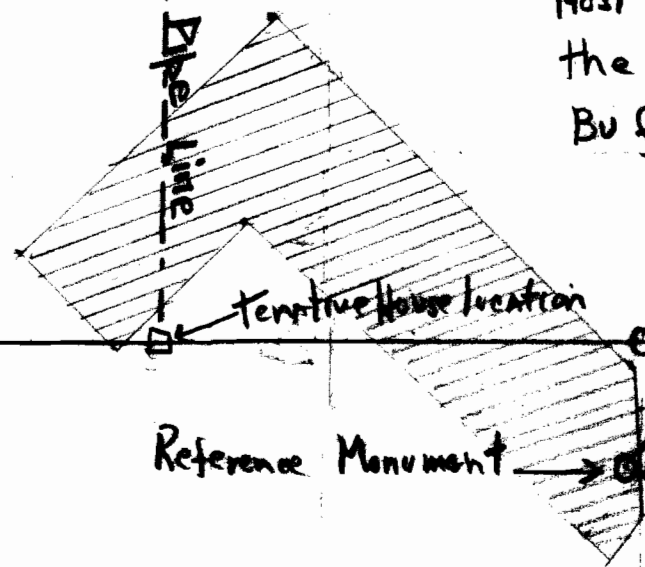


North Springs ← Reference Monument

Most Westerly North West Corner of the donation land claim of Buford Smith



11 chains

21
11 1/2

Reference Monument

spring flow
South Spring

RECEIVED

AUG 17 1949

STATE ENGINEER
SALEM OREGON

RECEIVED

JUL 21 1949

STATE ENGINEER
SALEM OREGON

Application No. 23780
Permit No. 18880

SCALE
1 in = 200 ft.

Note - Above spring locations based upon present existing line fences.



Irrigation - Appx 4.5 Acres