

Circular Iron Tank
 DIAM 56 feet. Height 7.0 feet
 Sta. 0+00
 Sta. 0+35

SE 1/4 of
 S.E. 1/4 of
 Sec. 1

T28S. R13W
 T28S. R12W

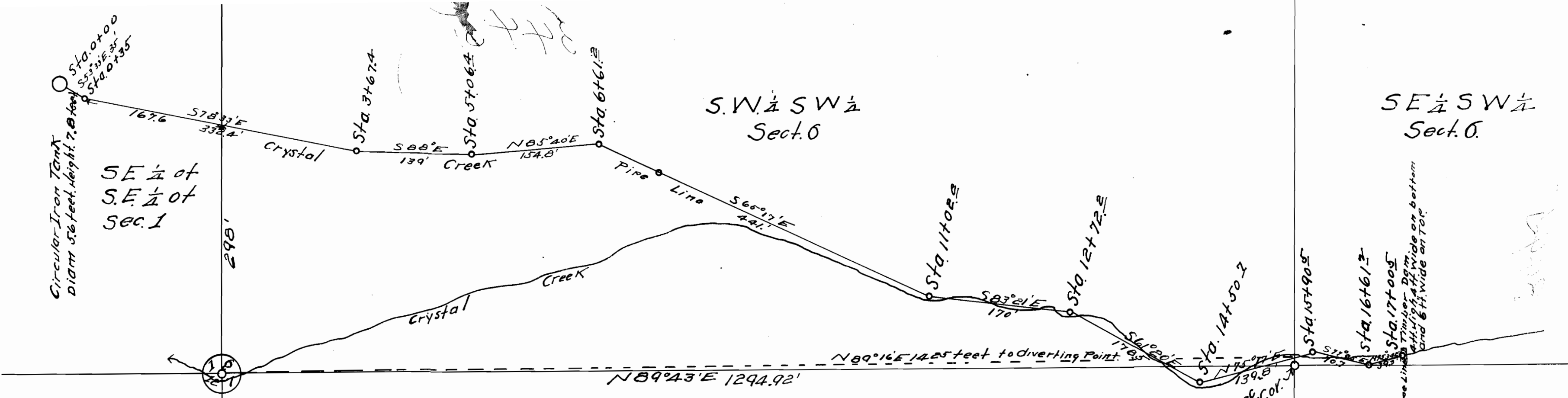
N.E. 1/4 N.E. 1/4
 Sect. 12

N.W. 1/4 N.W. 1/4
 Sect. 7

S.W. 1/4 S.W. 1/4
 Sect. 6

S.E. 1/4 S.W. 1/4
 Sect. 6

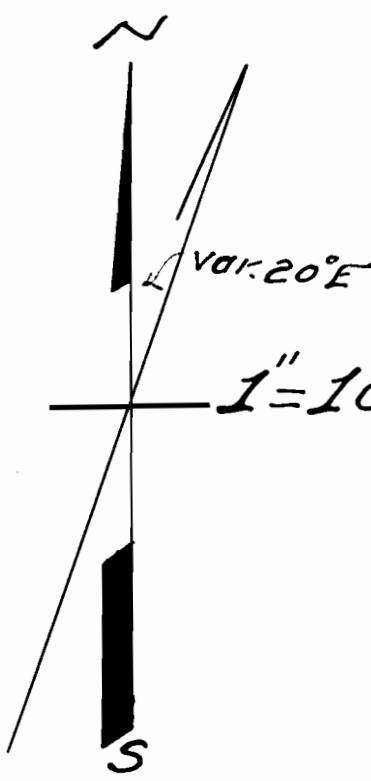
N.E. 1/4 N.W. 1/4
 Sect. 7



PLAT
 Showing location of "Crystal Creek"
 Pipe Line for the appropriation of
 water from "Crystal" Creek for Domestic use
 The diversion point is situated N 89° 16' E 1425 feet from
 corner to sections 1, 6, 7 & 12 T28S. Rps. 12 & 13 W. W.M. Oregon.

DALEM

Application No 3442
 Permit No. 1902



CERTIFICATE OF SURVEYOR

I, A. N. Gould County Surveyor
 of Coos County, do hereby certify that this
 map was made from notes taken during an
 actual survey made by me on August 9 and 11, 1913
 and it correctly represents the works described in
 the accompanying application, together with the
 location of streams etc. in the immediate vicinity

A. N. Gould.
 County Surveyor
 Coos County Oregon

3442

3442