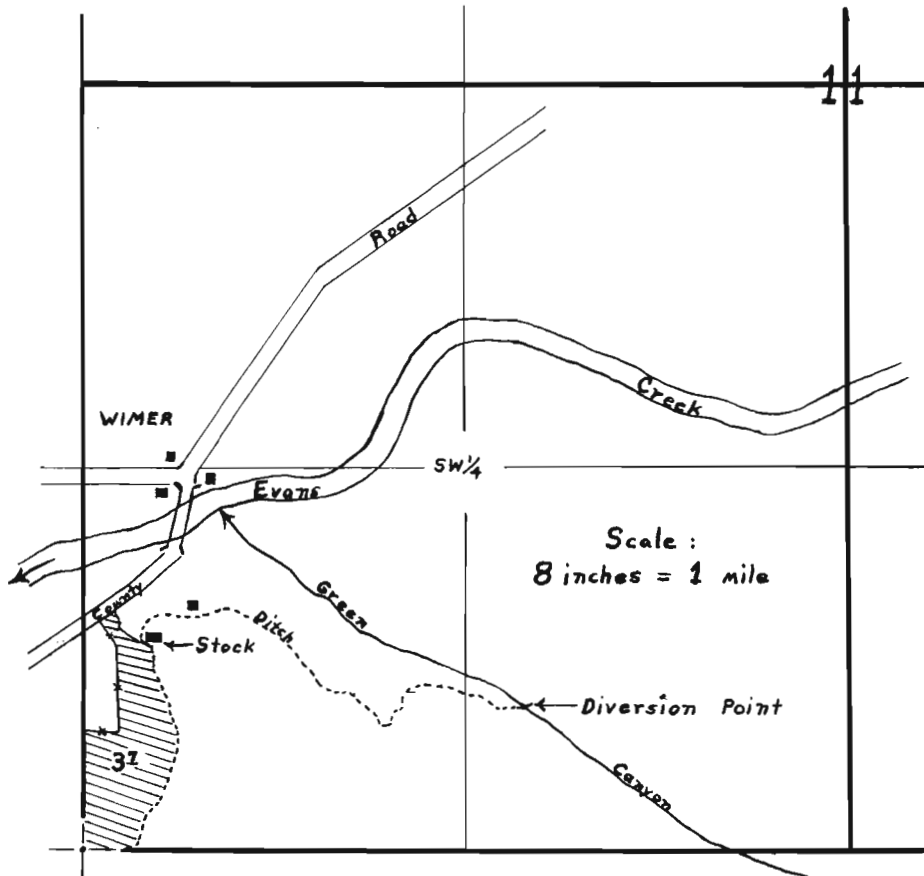


T. 35 S., R. 4 W., W.M.



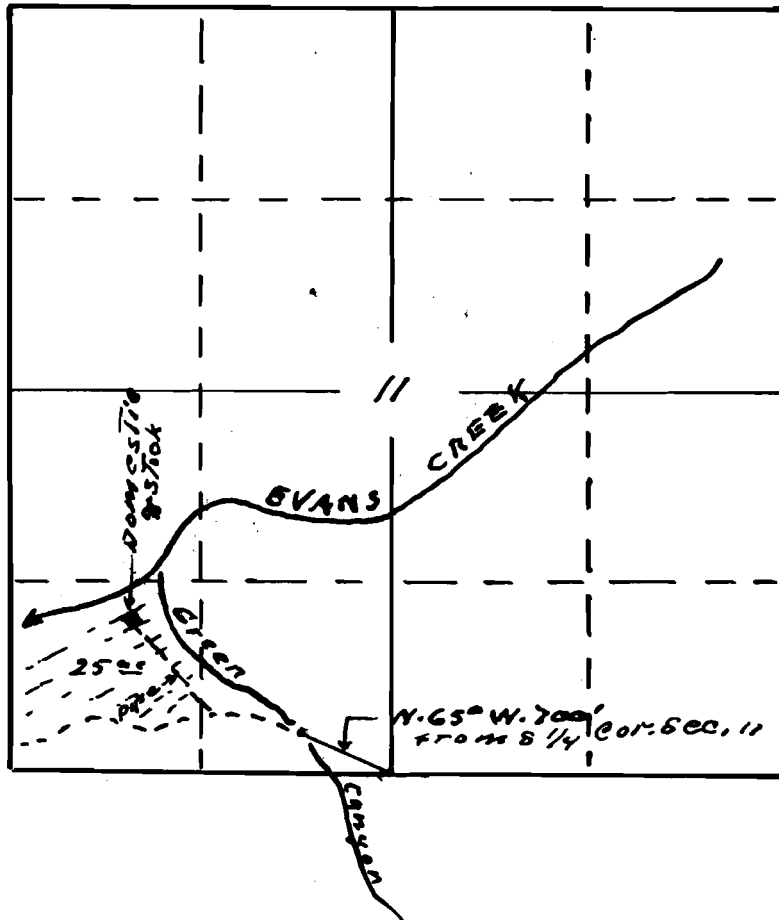
Map accompanying final proof of  
Larry Barnes, for use of water  
from Green Canyon for irrigation  
and stock purposes.

Map copied from plane table  
survey - Made Jan. 26, 1955.

APPLICATION No. 24314  
PERMIT No. 19129

David C. Hendrix  
Watermaster Dist. No. 15

Sec. 11, T. 35 S., R. 4 W. W. M.



Map to accompany application of  
Earl W. Ettars for use of water  
from Green Canyon for irrigation

This office 12/1/49 *Whit*

RECEIVED  
DEC 9 1949  
STATE ENGINEER  
SALOON CREEK

Application No. *2474*  
Permit No. 19129