

Stone Monument on  
S. Line of J. Dillamater D.L.C.

Lorane P.O. →

517°15'  
10.45 Ch.  
to NE Point of  
Diversion  
at Brdg. #  
200-38.38

Road

County

Old Channel  
52 ac.

New Channel

Farman Cr.

Note: Diversion  
will be made by the  
use of a portable  
pump along Ditch  
shown as New Channel  
from N.E. to S.W.  
Diversion Points.

N.W. Cor. of  
Foster Property.

5 Ch.

SW. Point of  
Diversion

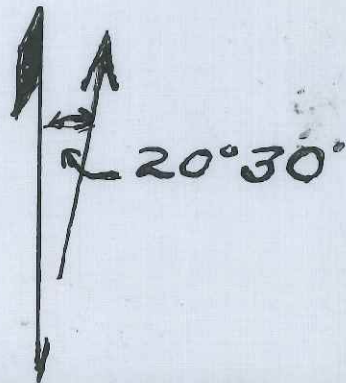
of the  
Siuslaw R.

9 ac.

38.10 ch.

I, K.P. McReynolds of Cottage  
Grove Oregon do hereby certify  
that this map was made from  
notes taken during an actual  
survey made by me on 12/1-2/49  
and monuments consisting of 1"  
Pipe 36" in length as shown on map  
is S17°15'E 10.45 Ch. from J.  
Dillamater D.L.C. Stone Mt. and  
E15.44 Ch. N.38.10 Ch. from the  
S. Cor. Between Sec. 13-14 T20S  
R5W.W.M. Lane Co. Oregon  
K.P. McReynolds.

Scale 1" = 5 Ch.



RECEIVED  
DEC 14 1949  
STATE ENGINEER  
SALEM, OREGON

Cor. Cl. 44  
Allister Sec. 14 Sec. 13  
T20S R5W  
17.27 ch. W. M. 15.44 ch.

24341  
9225.

Lorane P.O. →



Note: Diver  
 will be made  
 use of a portat  
 pump along  
 shown as New C  
 from N.E. to S.W.  
 Diversion Point

N.W. Cor. of  
 Foster Property.  
 5 ch.  
 SW. Point of  
 Diversion

I, K.P. McReynolds  
 Grove Oregon do  
 that this map was  
 notes taken during  
 survey made by me  
 and monuments cor  
 Pipe 36" in length a  
 is S17°15'E 10.45 Ch  
 Dillamater D.L.C. St  
 E15.44 ch. N.38.10 ch  
 S. Cor. Between Se  
 R5W. W.M. Lane C  
 K.P. McRey  
 Scale 1" = 5

Application No. 24341  
 Permit No. 19225.

S.W. Cor. Cl. 44.  
 W. McAllister Sec. 14 Sec. 13  
 T20S R5W  
 17.27 ch. W. M. 15.44 ch.

RECEIVED  
 DEC 14 1949  
 STATE ENGINEER  
 SALEM, OREGON

Stone Monument on  
S. Line of J. Dillamater D.L.C.

Lerane P.O. →

517°15'  
10.45 Ch.  
to NE Point of  
Diversion  
at Brdg. #  
200-38.38

Road

State Hwy

County

Old Channel

52 ac.

New Channel

Note: Diversion  
will be made by the  
use of a portable  
pump along Ditch  
shown as New Channel  
from N.E. to S.W.  
Diversion Points.

N.W. Cor. of  
Foster Property.

5 Ch.

SW. Point of  
Diversion

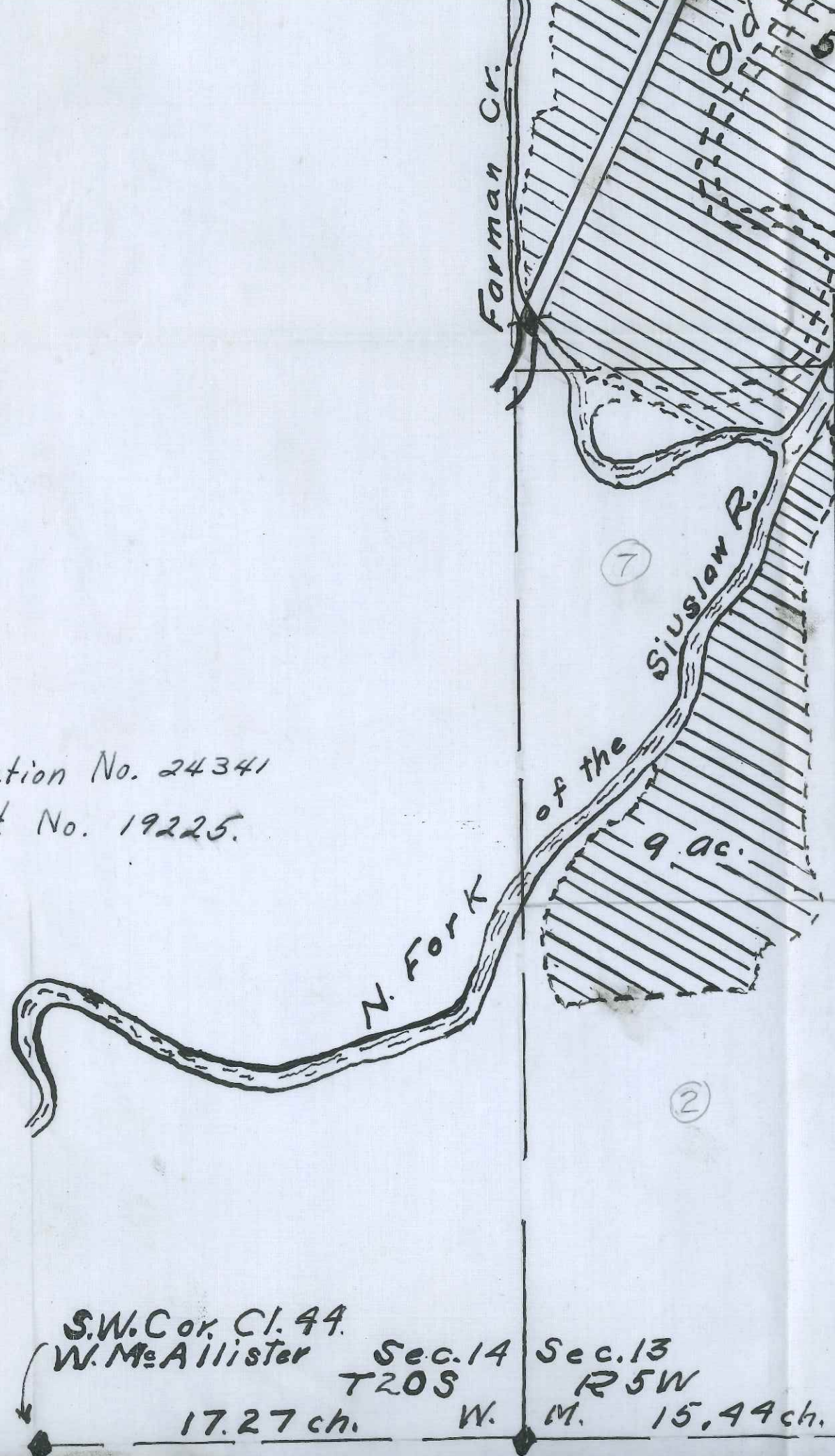
Farman Cr.

Piuslow R.

T. K. Reynolds of Cottage

13

Application No. 24341  
Permit No. 19225.



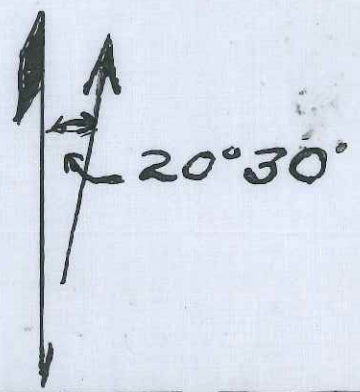
Note: Diversion will be made by the use of a portable pump along Ditch shown as New Channel from N.E. to S.W. Diversion Points.

N.W. Cor. of Foster Property.

5 Ch.  
SW. Point of Diversion

I, K.P. McReynolds of Cottage Grove Oregon do hereby certify that this map was made from notes taken during an actual survey made by me on 12/1-2/49 and monuments consisting of 1" Pipe 36" in length as shown on map is S17°15'E 10.45 Ch. from J. Dillamater D.L.C. Stone Mt. and E15.44 Ch. N.38.10 Ch. from the S.C. or. Between Sec. 13-14 T20S R5W. W.M. Lane Co. Oregon  
K.P. McReynolds.  
Scale 1" = 5 Ch.

RECEIVED  
DEC 14 1949  
STATE ENGINEER  
SALEM, OREGON



S.W. Cor. Cl. 44.  
W. McAllister 17.27 ch.  
Sec. 14 T20S R5W  
W. M. 15.44 ch.