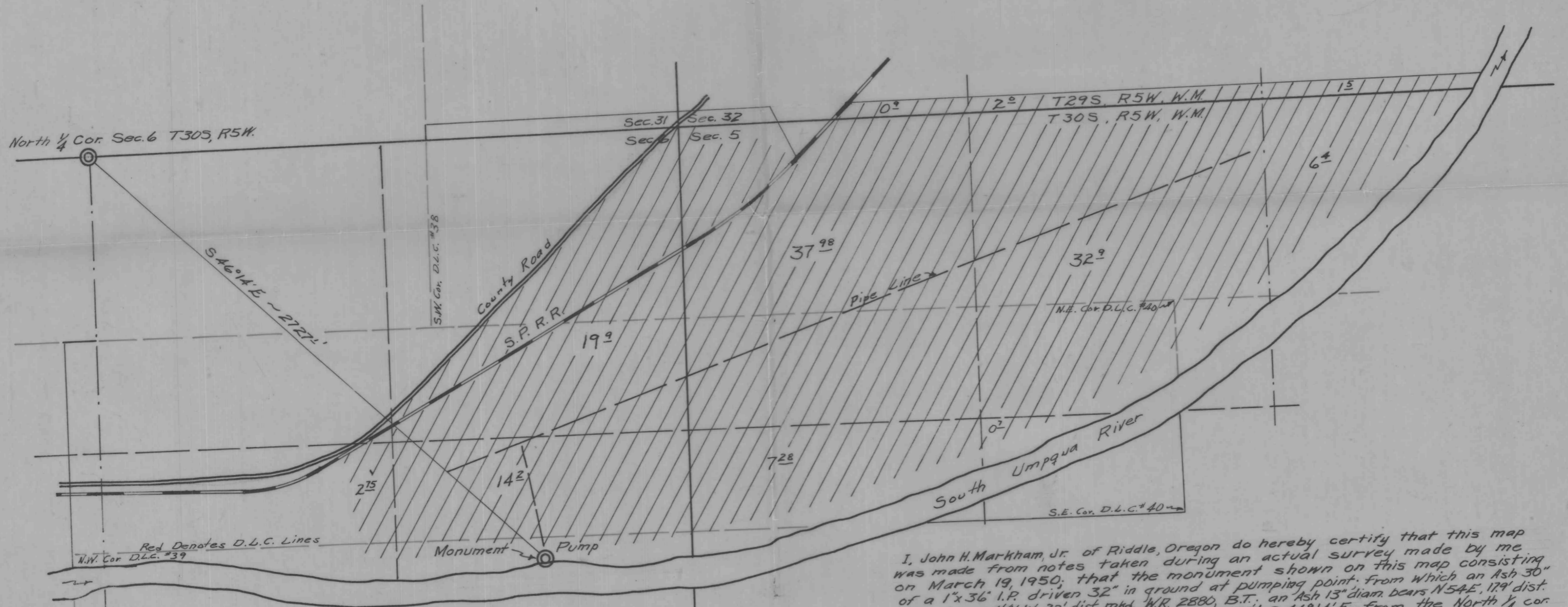


PREPARED FOR
G. N. WEAVER
 SHOWING
PROPOSED IRRIGATION DEVELOPMENT

SCALE 1" = 400' MARCH 1950



I, John H. Markham, Jr. of Riddle, Oregon do hereby certify that this map was made from notes taken during an actual survey made by me on March 19, 1950; that the monument shown on this map consisting of a 1" x 3/8" I.P. driven 32" in ground at pumping point, from which an Ash 30" diam. bears N46°W, 22' dist. mkd. W.R. 2880, B.T. an Ash 13" diam. bears N54°E, 179' dist. mkd. W.R. 2880, B.T. This monument is 2727', S46°14'E from the North 1/4 cor. Section 6, T30S, R5W, W.M. Douglas County, Oregon.

John H. Markham Jr.
 REGISTERED ENGINEER
 2880
 OREGON
 NOV. 5, 1948
 JOHN HOWARD MARKHAM, JR.

RECEIVED
 MAR 28 1950
 STATE ENGINEER
 SALEM, OREGON

24436
 19266

24436 16-30B