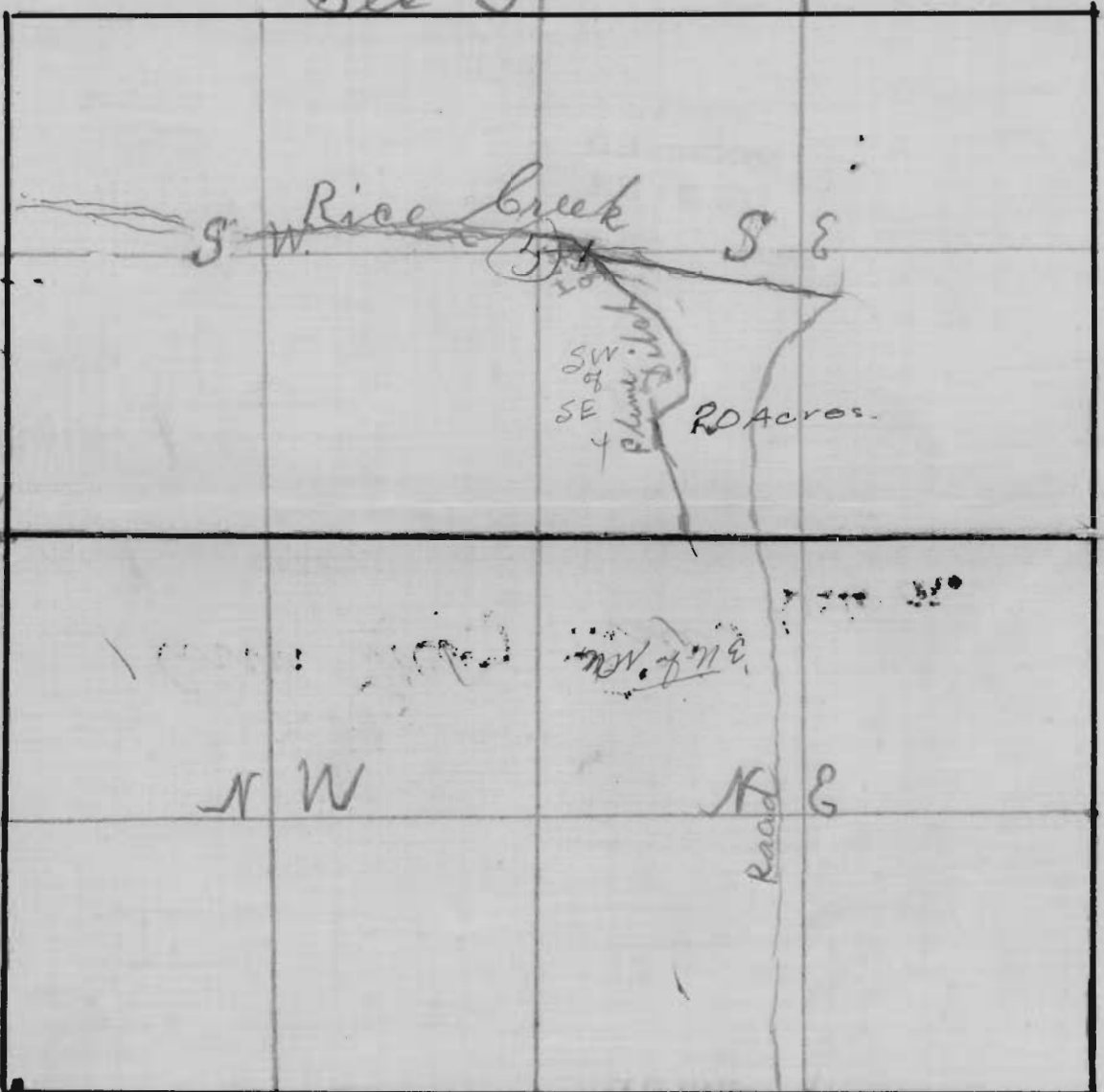


T 39-S-18 8-N,  
See 5-11



See 8 RECEIVED  
 FEB 3 1914  
 SALEM, - OREGON,

OFFICE OF STATE ENGINEER  
 RECEIVED  
 FEB 3 1914  
 SALEM, - OREGON,

Application No. 3441  
 Permit No.

Ann May Finch Kerby Co.