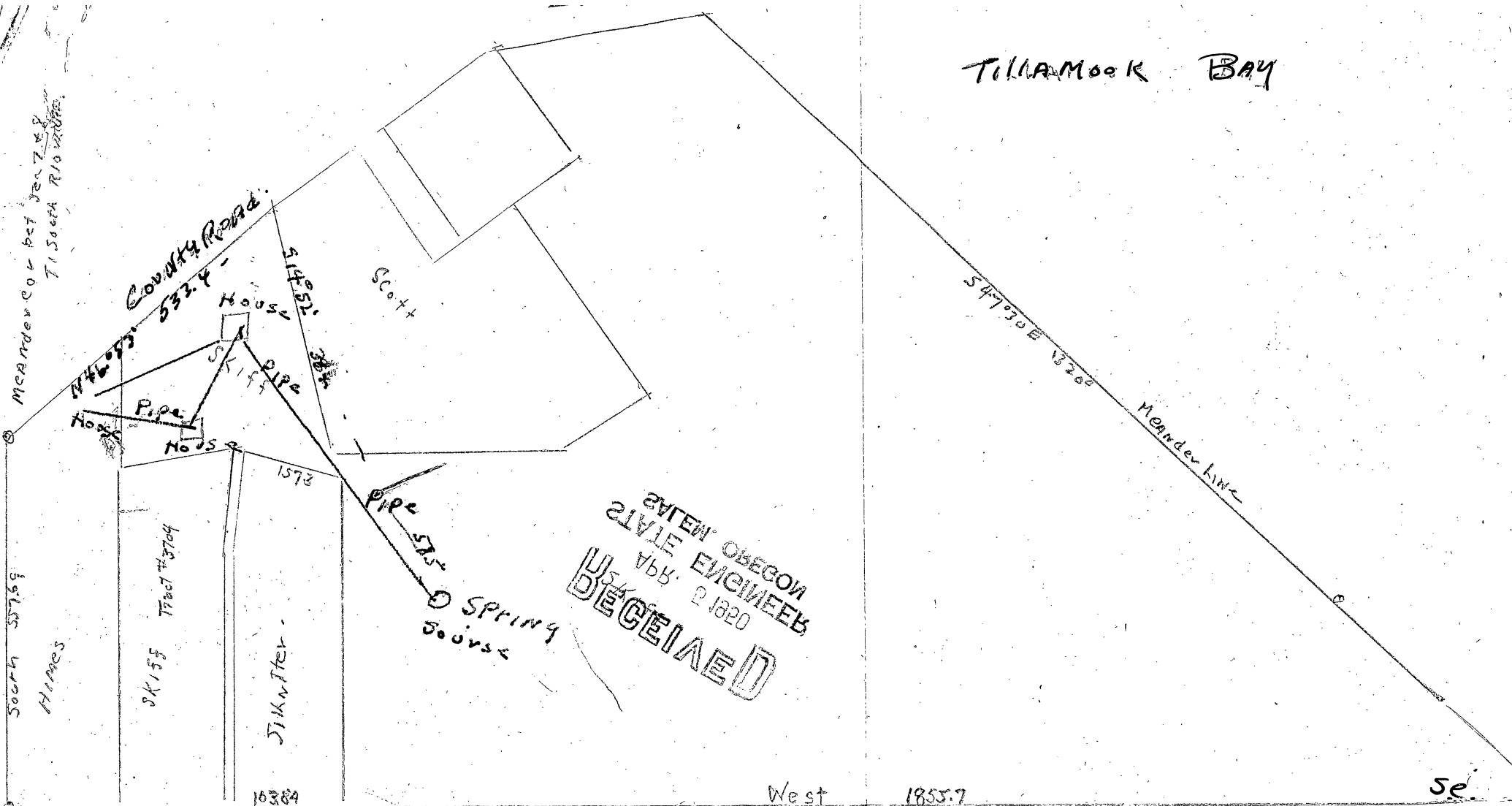


TILLAMOOK BAY



STATE OF OREGON
 STATE ENGINEERS
 APR 2 1920
 RECEIVED

SW Cor
 Lot 1, Sec 8
 T15 R10 W10

Corner
 of 900
 lot 355 d
 T15 R10 W10

24573
 19370

copy from
 MAP and Receipt Tillamook Abstract Co. 00123
 By W. STANLEY ENG IN CH.

24573 1-6 Fm