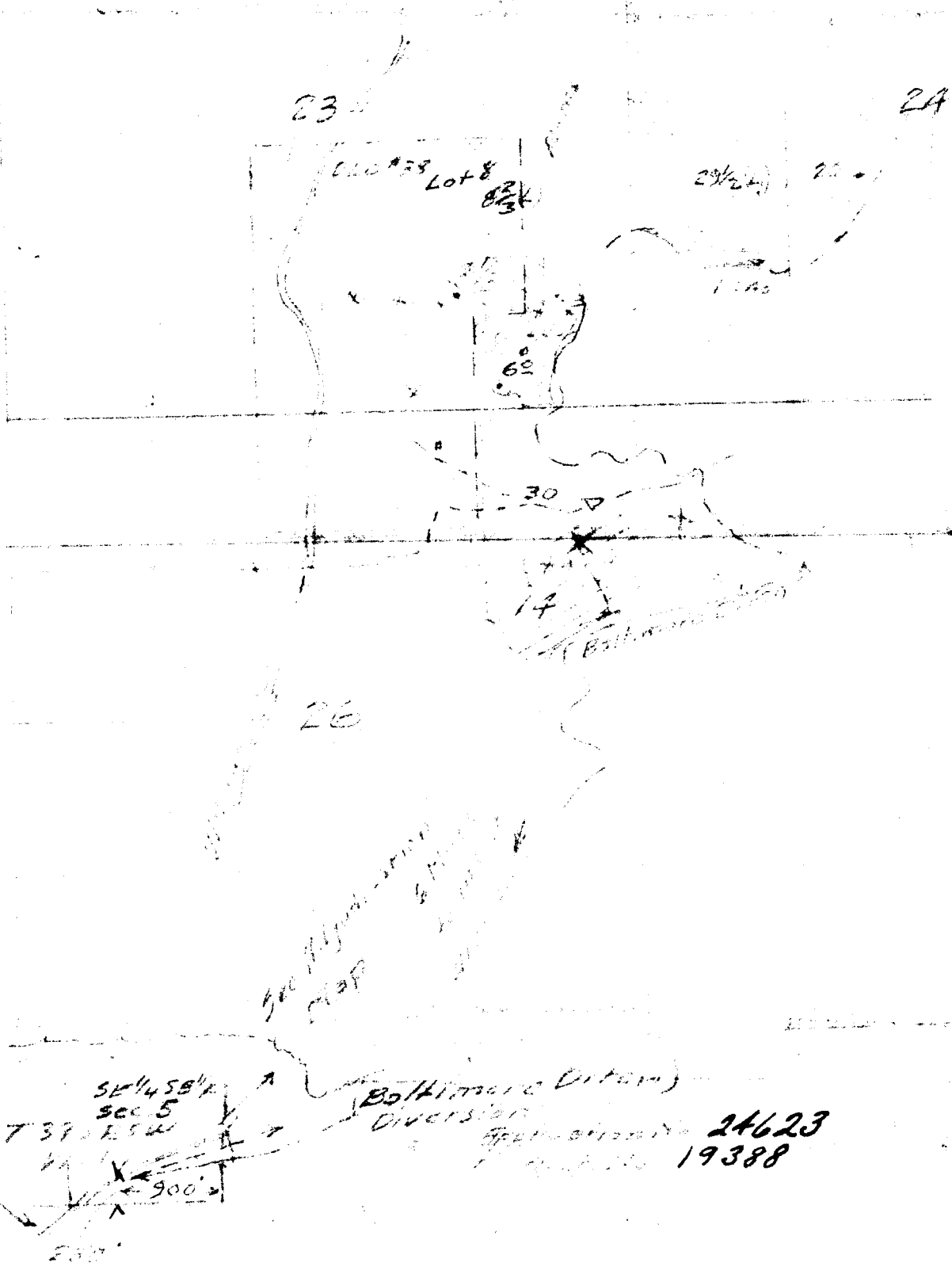


Permit: S 19388
Volume: 6B
Strm: W FK WILLIAMS CR
Trib: WILLIAMS CR
Priority: 4/19/50

*See Final
Proof*

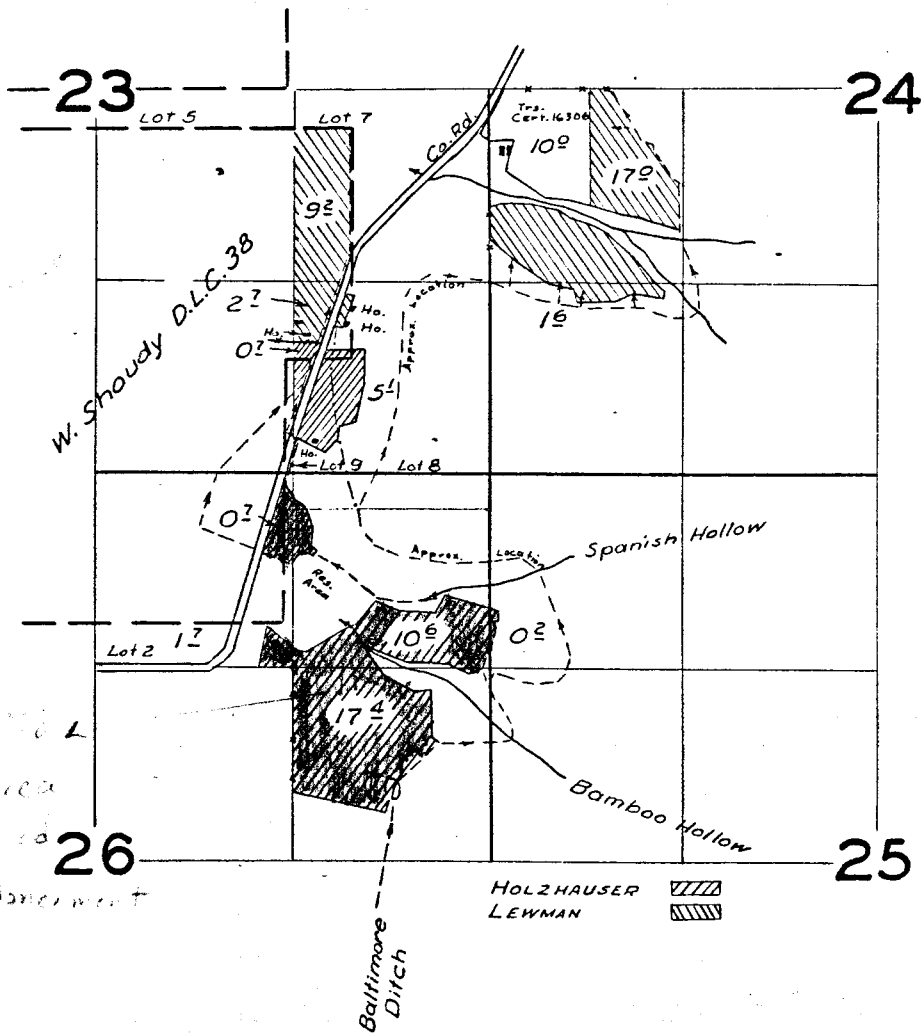


West Fork Williams Creek

*SEC 5
T 37 N R 5 W
900'
200'*

*Baltimore Ditch
Diversions
24623
19388*

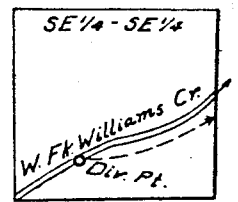
T.38 S.R.5 W.W.M.



As of Nov. 19, 1964
 The shaded area
 has been abandoned
 for a water conservancy

RECEIVED
 JUN 21 1978
 WM. DIST. 14
 GRANTS PASS. ORE.

T.39 S.R.5 W.W.M.
 SEC 5



From Adjudication Map

FINAL PROOF SURVEY
 UNDER

Application No. 24623 Permit No. 19388
 IN NAME OF

H.B. HOLZHAUSER, RICHARD F. & GLEN ORVAL LEWMAN

Surveyed 25 July 1959, by M. B. Rich

1959-D

