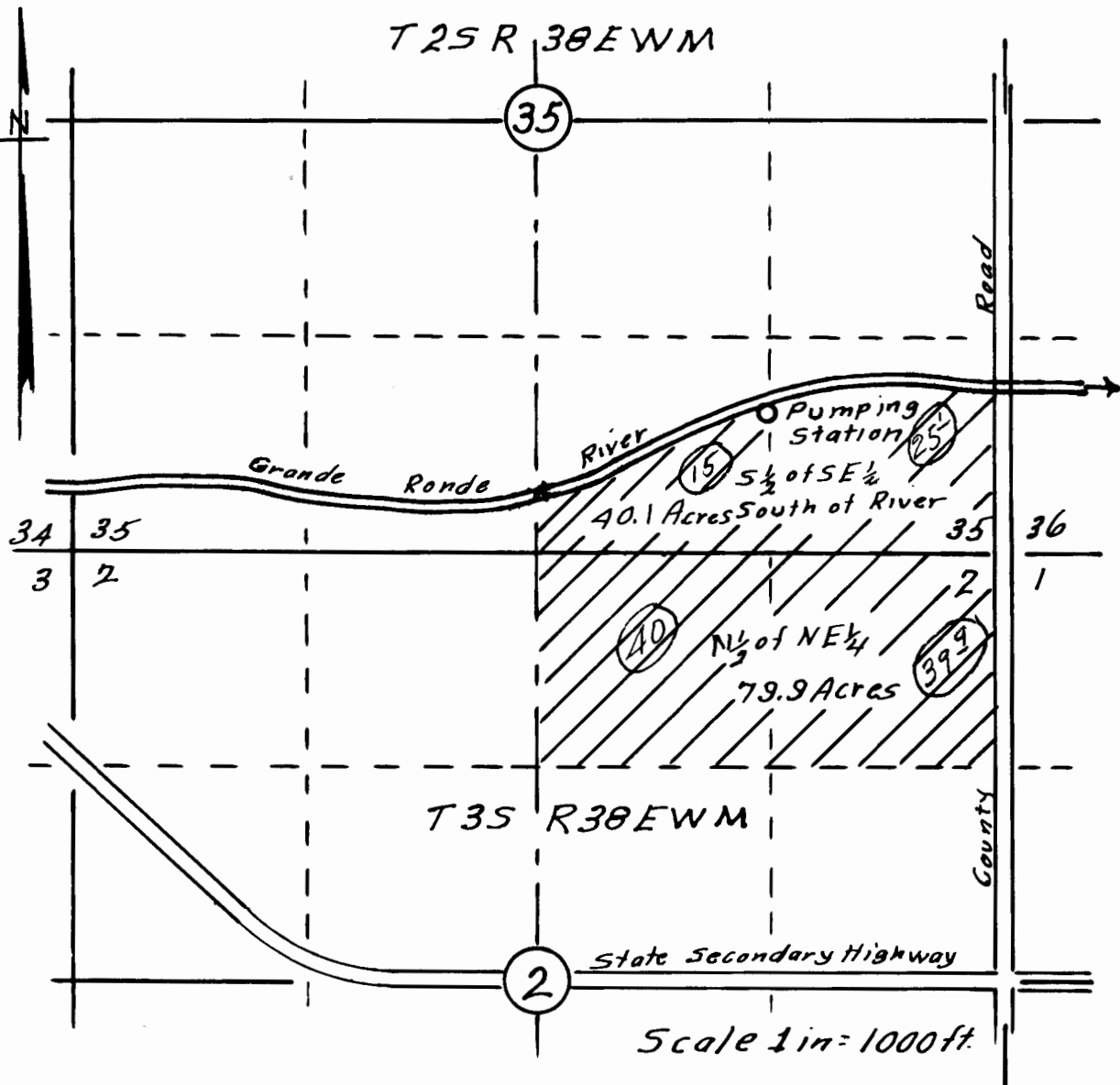


T 25 R 30 E W M

35



34 35
3 2

40.1 Acres South of River

5 1/2 of SE 1/4

40

NE 1/4 of NE 1/4

79.9 Acres

399

35 36
2 1

T 35 R 30 E W M

2

State Secondary Highway

Scale 1 in = 1000 ft.

Application No. 24811
Permit No. 19539

RECEIVED
STATE ENGINEER
SALEM, OREGON