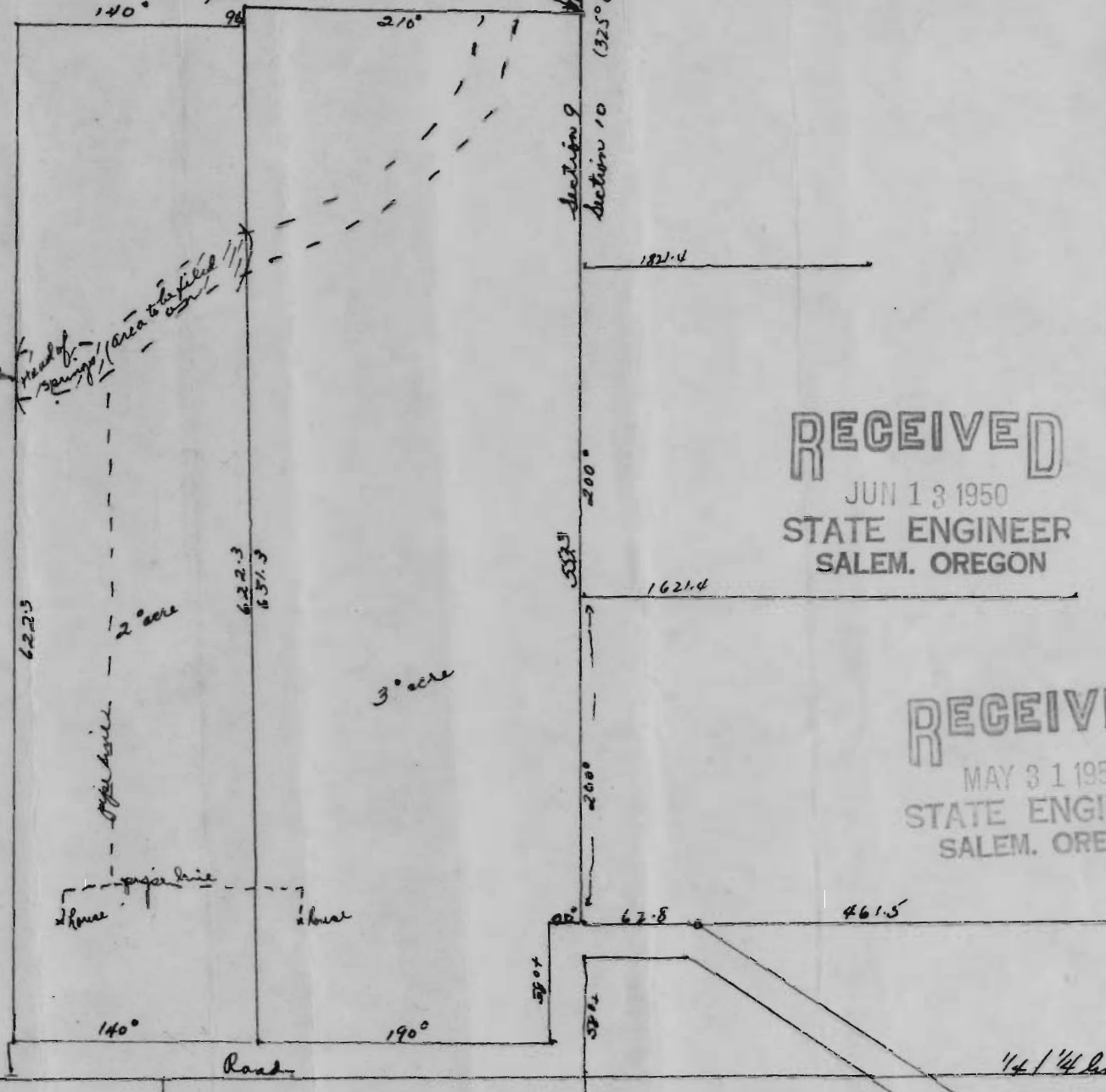


681.1 ft. N. from this point to N.E. cor. sec. 9



Point of diversion

head of spring (area to be filled)

2° acre

3° acre

Hydroville

House
proposed
about

Canyon
1/4 1/4 Road

Road

1/4 1/4 Road

Road
7.330 15E

RECEIVED
JUN 13 1950
STATE ENGINEER
SALEM, OREGON

RECEIVED
MAY 31 1950
STATE ENGINEER
SALEM, OREGON

Scale
1 inch = 100 feet

Partion of D.L.C. #40
loc. in NE. NE of
Section 9 - T.26 S. R.13 W.
W.W.M. Co. Co. Ore.

Application No. 24870
Permit No. 19569

24870
17-10.D