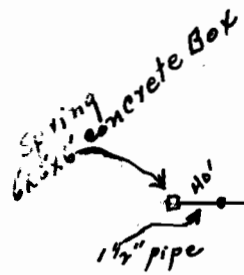


Township 25 R 44 E W 1

Section 10

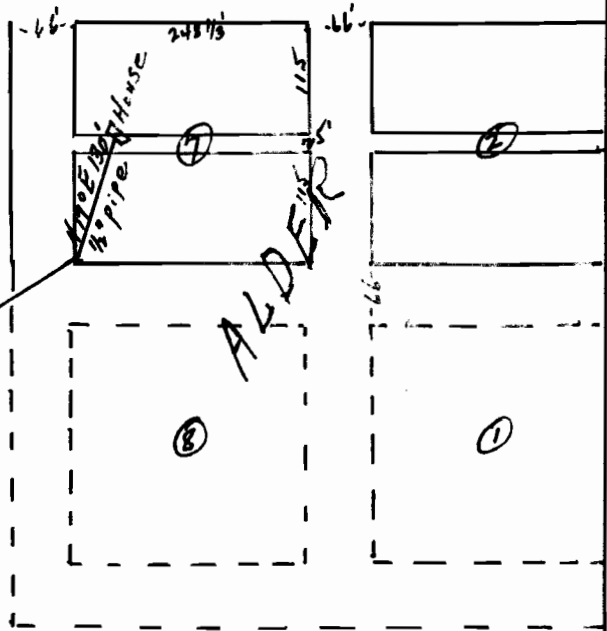
SE 1/4 SW 1/4 and SW 1/4 SE 1/4

Showing a portion of the platted
Town of Alder



377'
3/4" Pipe

N 57° E 924'
3/4" Pipe



Application No. 24883
Permit No. 19577

540'

RECEIVED
JUL 3 1950
STATE ENGINEER
SALEM, OREGON

Scale 200' = 1 inch

SE 1/4 SW 1/4
SW 1/4 Sec 10