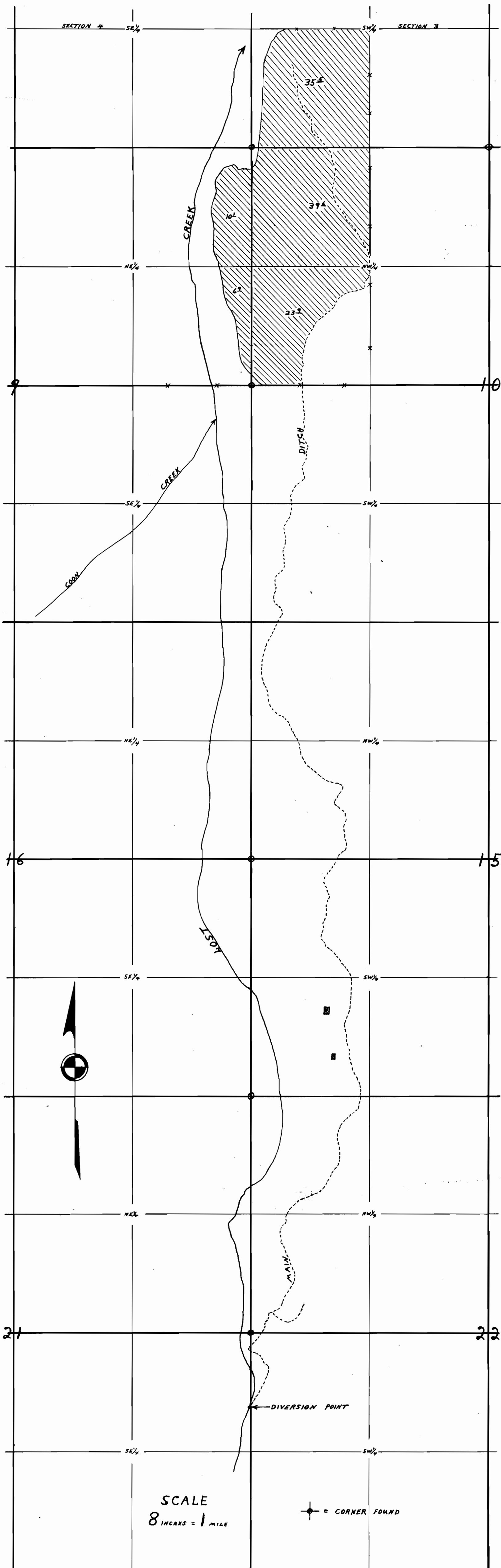


Map To accompany application of John Watch for use of water from Lost Creek for irrigation.

This office T - 50 Smith

T. 37 S., R. 2 E., W. 11.



MAP ACCOMPANYING FINAL PROOF OF JOHN WALCH, FOR USE OF WATER FROM LOST CREEK FOR IRRIGATION PURPOSES.

PERMIT NO. 19724 APPLICATION NO. 25038

MAP COPIED FROM PLANE TABLE SURVEY. DECEMBER 1953.  
David L. Hendrix  
WATERMASTER DIST. 15