



PLAT OF  
PART OF CHARLES SITTON 160 ACRES

In Sec. 32<sup>nd</sup> 33; T35; R4W<sup>nd</sup> Sec 4<sup>th</sup> 5; T45; R4W; W.M.

compiled from Yamhill County Assessors Records

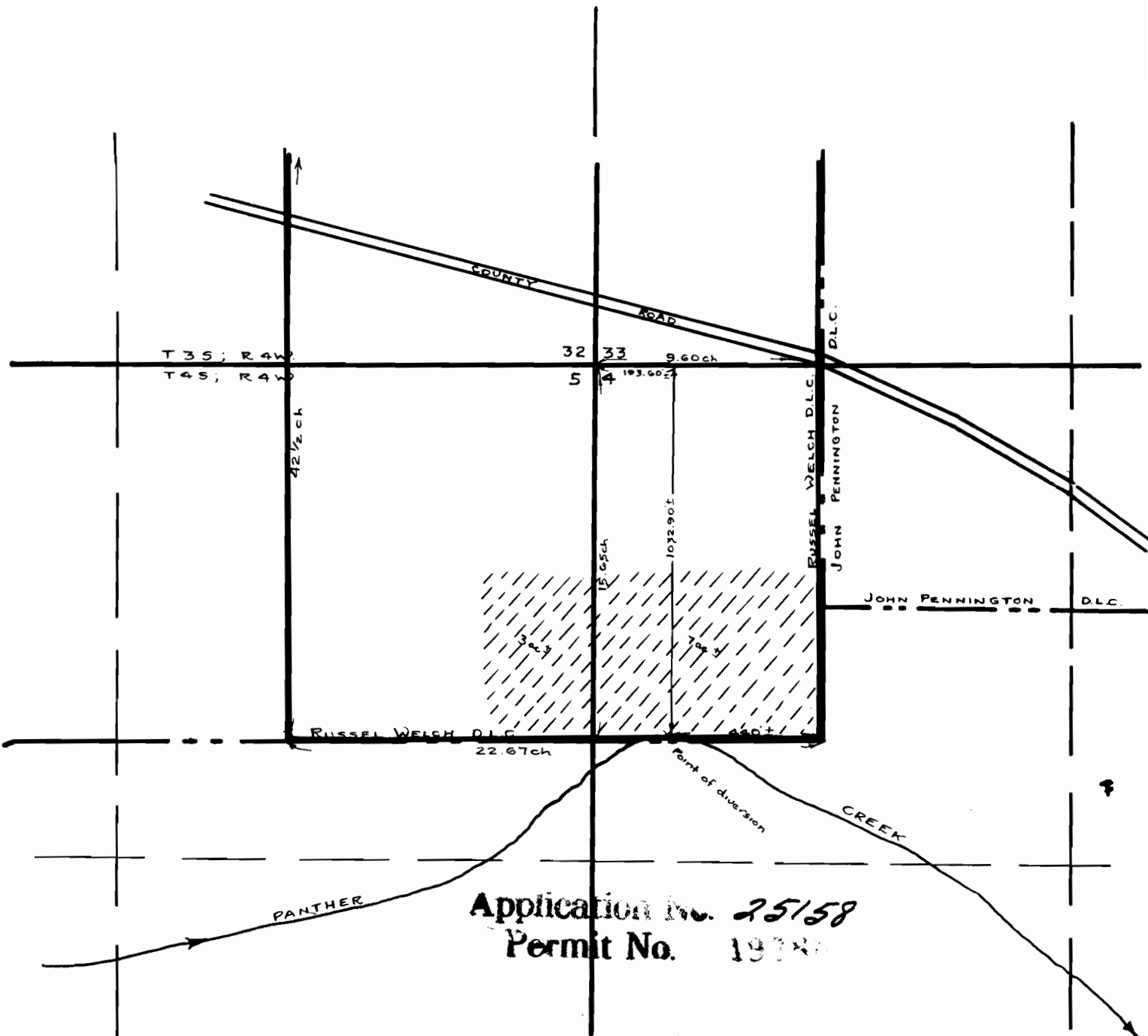
by M.H. Kraft



Tax Lot # 3334-4

Scale

1" = 400'



Application No. 25158  
Permit No. 1978