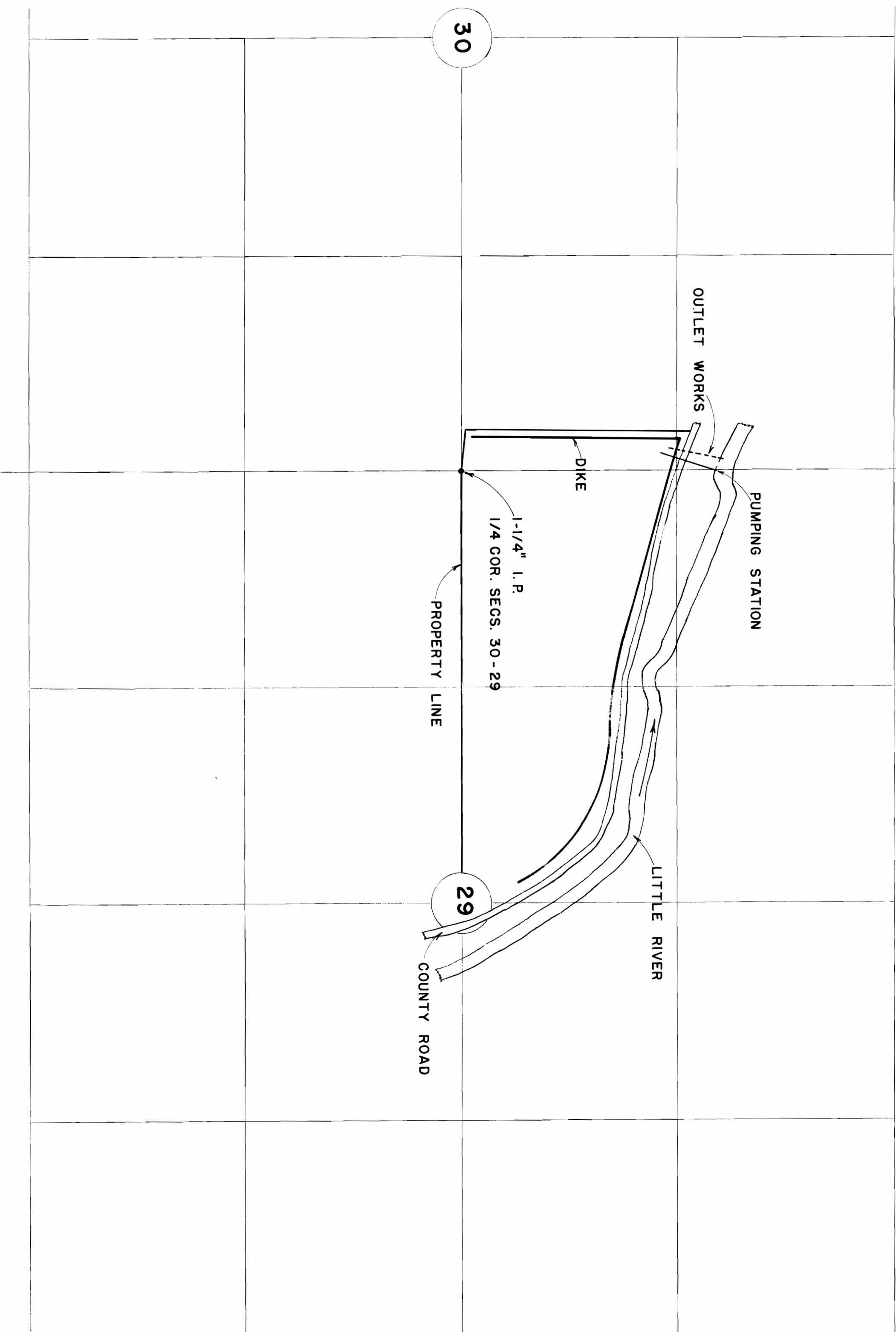


RANGE 3 WEST



30

29

OUTLET WORKS

PUMPING STATION

DIKE

1-1/4" I.P.
1/4 COR. SEGS. 30 - 29

PROPERTY LINE

LITTLE RIVER

COUNTY ROAD

TP. 26 SOUTH

LITTLE RIVER LOG POND

VICINITY MAP

SCALE : 1" = 500'

JULY 10, 1950

Handwritten notes:
K 457116
2/10

Handwritten signature:
C. H. Maxwell